

# WEATHER

	Min.	Max.	Precip.
Wednesday, Feb. 8	4	23	Trace
Thursday, Feb. 9	12	28	Trace
Friday, Feb. 10	11	22	0.10
Saturday, Feb. 11	9	22	0.02
Sunday, Feb. 12	1	20	Trace
Monday, Feb. 13	12	34	Trace
Tuesday, Feb. 14	14	38	0.00

ONE HUNDRED-SIXTH YEAR—No. 35

18 Pages This Week

Plus 4-Page Supplement

CHELSEA, MICHIGAN, THURSDAY, FEBRUARY 12, 1976

15c per copy

SUBSCRIPTION: \$6.00 PER YEAR

# The Chelsea Standard

## QUOTE

"God laughs at a man who says to his soul, 'Take thy ease'."  
—Abraham Crowley.

## Varsity Debaters in State Finals Today

Chelsea High school varsity debaters were recently notified that their "at-large" bid to debate in the state finals to be held in Mt. Pleasant at Central Michigan University has been accepted.

The debaters, Brenda Shadoan, Barb Hinderer, Doug Foreman and Kim Brown, accompanied by their coach, William Coelius, will travel to Mt. Pleasant today (Thursday) for the three-day tournament.

The eight round debate tournament will put the top eight schools into quarter-finals, followed by the top four into semi-finals; the top two schools will then meet each other for final competition on Saturday.

Coelius remarked that he has high hopes for his debaters, though he cautioned that this year will be tough for Class B schools. Coelius said that five schools previously classified as Class A schools, one of which, JFK, was a former state Class A champion, have dropped to Class B because of decreased enrollment. He expects these five schools to present some stiff competition for his debaters.

## Voice of Democracy Winners Announced

Last Friday, Feb. 6, the Veterans of Foreign Wars Post 4076, represented by Fremont Boyer, and the Auxiliary to the Post, represented by Lucy Piatt, presented medals to the top three winners in the "Voice of Democracy" script writing contest.

A U. S. Savings Bond was presented to first-place winner Ellen Streub. Gail Glibreath was awarded second place for her contribution, and Sue Barlow received a third-place recognition. Each student who entered received a participation card noting that their script had been judged. All three winners are students at Chelsea High school.

Sixth District winners in the "Voice of Democracy" contest were announced Sunday, Feb. 8. Taking first place was Vincent Marizita, sponsored by Post 701 of Lansing. Bart Lyon of Pinckney, sponsored by Hamburg Post 1224, took second place. Third place went to Mark Meinhardt who was sponsored by the Newport Post 3943, and fourth place was awarded to Kendra Beardslee of Parma, sponsored by Post 5574.

Assisting the Chelsea post and auxiliary with the contest was William Coelius, speech teacher at the high school.

## Girls Volleyball Teams Have 3-1 Record for Week

Chelsea High school's varsity volleyball team took home an easy victory last Wednesday night from Stockbridge. The girls won, 15-6, 15-1. Brenda Augustine served eight of Chelsea's points in the first game and seven of the points in the third game.

The varsity volleyball team extended their winning streak to six by defeating Brighton on Friday. Between starting slow and having a sun problem, the girls lost the first game, 5-15. They then came back to win the second game, 15-8. Seven of Chelsea's points in this game were scored by Karen Tobin.

The third game Chelsea won, 15-8, with Brenda Augustine serving seven of the points. The match was characterized by many long volleys and lots of spiking.

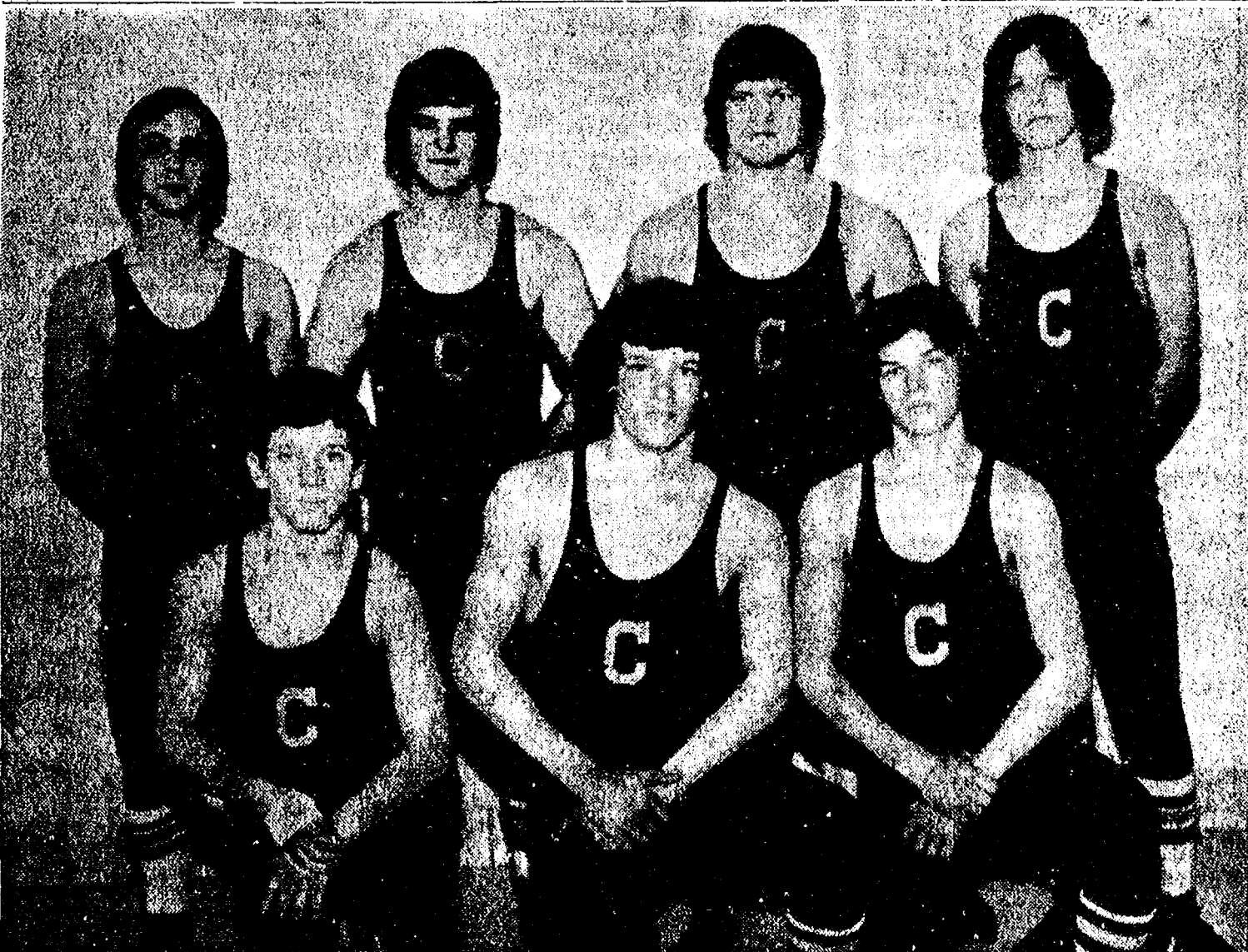
The Chelsea team now has a 3-1 overall record and a 3-1 league record. Saline is the only undefeated team in the league.

**JVS DOWN STOCKBRIDGE**

Chelsea High school's JV volleyball team came back from their two losses last week to defeat Stockbridge, 15-8, 15-7. The total team showed improved overall play. Six of the points in the first game were scored by Denise Robbins and eight of Chelsea's points in the second game were scored by Diane Ottoman.

The girls then fell victim to a tough Brighton team on Friday, 1-15, 9-15.

These games make the Junior Varsity record 4-3 for the season and 2-2 in the league.



CHELSEA WRESTLERS finished second last Saturday to Saline in the Southeastern Conference Meet. Despite the fact that the Hornets ran away with the tournament totaling 122 points, the Bulldogs managed to post four individual champions and three wrestlers in the consolation bracket.

## Bulldog Wrestlers Have Four Champions in Conference Meet

Chelsea's grapplers finished second, only to Saline last week-end in the Southeastern Conference Meet. The Bulldogs rolled for 94 1/2 points while the Hornets totaled 122 for the win.

Millan came in third with 90 1/2 points. Novi had 88, Dexter 73, South Lyon 55 1/2, Brighton 39, and Lincoln 11.

While Saline managed to place eight wrestlers in the finals, the Bulldogs fought for the most individual champions with four. According to Coach Richard Bareis, not another school present was able to name more than two individual champions.

Taking league honors were Dale Schoenberg at 122 pounds, Nick Keiser at 148 pounds, Tim Reed at 158 pounds, and Dennis Bauer at 188 pounds.

Jim Stahl, at 115 pounds, made a strong bid for Chelsea's fifth title, but had to settle for a second place, losing a close 2-1 match to Dexter.

In the consolation bracket, Chuck Schoenberg at 122 pounds, Nick



SOLO AND ENSEMBLE FESTIVAL Division I, II and III ratings were given to 7th graders at the Beach Middle school following performances in Dexter last Saturday. Seated from left are Beth Bush, Donna Finkbeiner, Dawn McDowell and Kathy Hon-



FESTIVAL WINNERS: 8th graders who received Division I, II or III ratings at the Junior High Solo and Ensemble Festival held last Saturday in Dexter are seated from left, Sally Bot, Jeanette Morrison, Ann O'Hagen, Gail Beyer, Cynthia Walter and Mary McCallum. Standing, from left, Julia Smith, Drew Sprague, David Waldyke, Dan DeSmyther, Dave Morris, Julie Botsford, Karen Blanchard, Debbie Honbaum, Kelly Borton and Chris Check.

## Junior High Music Students Score Well

Chelsea's 7th, 8th and 9th grade music students traveled to Dexter last Saturday for the District 12 Solo and Ensemble Festival. The musicians were rated according to Michigan Band and Orchestra Association ratings with Division I representing an excellent level of performance and musicianship, and Division V representing an unsatisfactory performance.

Among the 9th graders attending, Sheryl Kiel and Cindy Klobuchar were awarded Division I ratings for their solos on the clarinet. Division II ratings for solos were given to Scott Beyer on the trombone, Liz Bonus on the oboe, Jim Breza on the cornet, Sue Heller on the french horn, Lori Van Riper on the oboe, and John Whitaker on the trombone. Mary Noah received a Division III rating for her flute solo.

The woodwind duet of Sheryl Kiel on the clarinet and Lori Van Riper on the oboe was given a Division II rating. The clarinet duet of Cindy Klobuchar and Anne Umstead also received a Division II rating.

Coming home with Division I ratings for their solo performances in the 8th grade were Kelly Borton and Debbie Honbaum on the clarinet, Julie Botsford on the piano, Ann O'Hagen and Cynthia Walter on the flute and Drew Sprague on the trumpet.

In the ensemble performances, Division I ratings were given to the flute duet of Mary McCallum and Carol Watson; the flute quartet of Cynthia Walter, Ann O'Hagen, Gayle Beyer and Jeanette Morrison also took a Division I rating.

The clarinet trio composed of Karen Blanchard, Julie Botsford and Debbie Honbaum took a Division I rating as did the woodwind quartet of Sally Vaught, flute; Linda Hamilton, flute; Chris Check, clarinet; and Janet Oberg, clarinet.

Another Division I rating was given to the brass quartet of Drew Sprague, trumpet; David Waldyke, cornet; David Morris, trombone, and Dan DeSmyther, trombone.

Receiving 8th grade Solo II ratings were Gayle Beyer, Denise Geddes, Jeanette Morrison and Sally Vaught, all on the flute. Chris Check received a II rating for a piano solo.

## Babysitting Clinic Starts Next Tuesday

Interested in earning some money in your spare time? How about babysitting? Oh, you know nothing about taking care of children? You wouldn't know what to do in an emergency? What do parents expect from their babysitters?

Your problems are solved. Chelsea Jaycee Auxiliary will hold a Babysitting Clinic Feb. 17-20 at Beach Middle school from 3:45 to 5 p.m. The clinic is open to all boys and girls in the 6th through 12th grades.

According to Ginny Wheaton who co-chairs this year's clinic with Jeanne Messing, a doctor, nurse, fireman, policeman and mothers will be present one of each of the four afternoons to give tips for the babysitter.

Youth who complete the course will receive a certificate and their name will go into a book which will be made available to persons wanting babysitters through the Jaycee Auxiliary.

To register, phone Mrs. Messing at 475-7026 or Mrs. Wheaton at 475-7412.

## College-Bound Juniors Should Register for ACT

—The American College Tests, (ACT) will be offered to college-bound juniors at Chelsea High school Saturday, April 10. Registration forms for the tests will be available in counselor's offices at the high school beginning Tuesday, Feb. 17.

According to Chelsea High school counselor, George Bergman, the forms must be completed and in the mail no later than March 15 to insure eligibility for the April 10 testing date.

Bergman also noted that juniors interested in the Michigan Competitive Scholarship Program must take the ACT. Bergman stressed that for these college-bound juniors the April 10 date is preferred over later dates when the test will be offered.

## Cagers Get First Victory In Conference

It finally happened! Chelsea High school's varsity basketball team won their first Southeastern Conference game Tuesday evening when they met South Lyon on the home courts. The Bulldogs pulled off the 58-53 win after jumping off to a first quarter 18-10 lead.

The first time around, the Bulldogs lost to South Lyon, 67-53.

The irony of it all, is that varsity coach Tom Balistrere, who has worked hard with his players all

## Cagers Fall Victims to Brighton 58-45

If it were not for the consistent shooting of the Chelsea High school's star cager, Randy Guenther, the Bulldogs might be a lot worse off than they already are. According to Bulldog Coach Tom Balistrere, it's Guenther's superb play that keeps the team in every game.

Last week-end the Bulldogs fell victim to another, their 12th (10th in the league) loss, when Brighton's Bulldogs were able to bump them right off the court for a 58 to 45 victory.

## South School Fun Fair Raises \$1,200

Those children who attend South school can expect to return to school next fall to a beautiful new playground, all made possible last week following the school's second "Fun Fair." According to Nadine Koch who co-chaired the event with Sue Kelly, some \$1,200 was raised for an ecology playground. Mrs. Koch said weather permitting, that the equipment can be installed this spring so the children may have the use of it before school ends and during the summer months. However, if something should prevent that, the children are assured of a new playground in the fall.

Last year parents and teachers worked together to promote a "Fun Fair" that raised \$600. The money was spent for a laminating machine. "This year we are putting it toward something for the children," Mrs. Koch commented.

The fair which was held in the classrooms and gymnasium at the South school, ran from 5 to 9 p.m. last Friday. Among the activities were a make-up room, where children would be transformed into clowns or any character of their liking... for a price of a ticket, of course; a bake sale, where those with a sweet tooth could have spent an entire evening drooling

## JC Cribbage Play Goes Into Final Week

Results of the three nights of competition in the cribbage tournament are as follows: The top eight will play in the finals next Monday evening.

	W	L	Pts.
Tom Pizon	20	10	1055
Art Jarve	18	12	1281
Sue Walton	17	12	1388
Ginny Wheaton	17	13	1352
Darlene Barry	16	14	1515
Skip Schulte	16	14	1455
Diane Kyte	16	14	1434
Betty Mull	16	15	1594
Dave Evison	15	16	1714
Richard Glasson	14	16	1707
Tom Penhalegon	13	17	1790
Dorothy Hafner	13	17	1743
Leslie Williams	12	18	1802
Tom Grimm	10	10	1066
Sally Schulte	8	12	1222
Carl Leffler	3	7	713

(Continued on page six)



UNITED WAY BOARD OF DIRECTORS for 1976-77 will assume their offices Feb. 18. They are seated from left, treasurer, Marie Robbins and vice-president, Sue Wood. Standing from left secretary, Earl Klemmer; president, David McLaughlin, and finance chairman Jerry Ringe.

## United Way Headed by D. McLaughlin

Chelsea United Way reached 93 percent of their goal this year bringing in \$28,692.32 toward the requested \$32,718.

Chairman of this year's United Way was Marie Robbins.

At a recent meeting of the United Way, new members and a new board for the 1976-77 year were appointed.

New board members, whose offices will be effective Feb. 18 are headed by President David McLaughlin. Other officers are Sue Wood, vice-president; Earl Klemmer, secretary; Marie Robbins, treasurer; and Jerry Ringe, finance chairman.

New members of the United Way are Dale Schumann, Mrs. George Merkel, Mrs. Robert Bauer, Fred Swartz, Don Pierson, Oren Wireman, Pat Borders and Ann Feeney.

Each year seven new members are added to compose a 21-member group.



Excellence Award By Michigan Press Association  
1951-1952-1960-1964-1965-1966  
Walter P. Leonard, Editor and Publisher

Published every Thursday morning at 300 North Main Street, Chelsea, Mich. 48118, and second class postage paid at Chelsea, Mich., under the Act of March 3, 1879.

Subscription Rates (Payable in Advance)  
In Michigan: One Year \$8.00, Six Months \$4.50, Single Copies \$ .20  
Outside Michigan: One Year \$8.50, Six Months \$4.50, Single Copies \$ .25

MEMBER NATIONAL ADVERTISING REPRESENTATIVE: NATIONAL NEWSPAPERS, INC. 257 Michigan Ave. East Lansing, Mich. 48823  
Association - Founded 1885

## Uncle Lew from Lima Says:

DEAR MISTER EDITOR:

Ed Doolittle had a handful of clippings and that squinty-eyed look at the country store Saturday night, so the fellows figured it would be easier on all concerned if they let him have his say. It turned out Ed was complaining all over more than anywhere else. He started by saying he hoped that filer in Maine was satisfied. Ed

had saw this piece last summer where a agency was doing a survey on rural life up there. They ask this one feller and he said his biggest problem was not being able to use his sled two months out of the year. Somewhere in Northern Maine there is a happy man, said Ed, unless the politicking in New Hampshire has built up a wave of not air that could cause a thaw.

Speaking of politics, Ed had saw where there are 90 some bills being sponsored in Congress to clean up the Congressional Record, but he said he would lay odds that the Record will keep right on being the trash basket of Congress. Congressmen like it because it has no relation at all to what they do. They can edit what they say so it makes sense in print, and they can add what they please to play up to the folks back home. Last year Ed reported, there were 43,000 pages, and each page cost taxpayers \$278. That's \$12 million worth of everything from recipes for Girl Scout cookies to three-hour speeches made on the floor of the Senate by senators on the same day they were inspecting military bases in London nightclubs.

None of them 90 bills will live, declared Ed, because the Congressmen believe in changing the Record the way they believe in full employment. That is, they are strong for everybody having a job, but not theirs. And keeping a good report going into the Record can't hurt their job security, was Ed's words.

Ed dug out a clipping of another study done by Department of Commerce economy experts to find out where and how state and federal tax money is spent. What is scary about his report, Ed declared, is that they found out there are more than 80 million Americans being supported by taxes, but fewer than 72 million have jobs outside Government. This means the balance has swung, Ed said, and there are more folks living off the taxpayers than there are taxpayers.

Zeke Grubb broke in to say it ain't no wonder we spent \$74 billion more than we took in this year. The wonder is we got people running for offices with promises to give more money away to more folks for more good reasons. Zeke said seeing the root of our problem is like the feller that read a Department of Agriculture report where onions ain't fit to eat. The next day he saw where two fellows died after drinking a mixture of varnish, paint thinner, lemons and onions. He figured they got to many onions in it.

It may be, Zeke said, that we

## MICHIGAN MIRROR

By Elmer E. White, Secretary, Michigan Press Association

**Tarnation!**  
"Eastward Ho" is the bicentennial cry, a covered wagon is the transportation and a state legislator is Michigan Trail Boss. Democratic Rep. Paul Porter of Quincy recently accepted appointment as Trail Boss for Michigan's vehicle in the Bicentennial Wagon Train.

Our state wagon, supervised by the Michigan Horse Council, is slated to leave Lansing May 5 to meet a national train coming from Elkhart, Ind. That train is one of five major wagon trains that will wind their way to Valley Forge, Pa., arriving on July 3 to participate in the nation's 200th birthday celebration.

The wagon train project, endorsed by the Michigan Bicentennial Commission and the American Revolutionary Bicentennial Commission, will involve moving hundreds and perhaps thousands of people, wagons and horses. Another move that has the backing of Michigan's national birthday celebration commission is that of a house—tagged "the most historical building in Macomb county."

The commission awarded \$2,500 matching grant for the moving and renovation of the Crocker House in Mount Clemens.

Built in the late 1850s by Joshua Dickinson, the first mayor of Mount Clemens, the house had been acquired by the Department of State Highways and Transportation because of needed improvements in a highway in that city.

To preserve the structure, the department donated it to the Macomb County Historical Society, which plans to move and re-do the building as a museum. The house was moved once in 1908.

The latest move will come after the Society collects enough funds—an estimated \$100,000 to \$200,000—to cover its efforts.

### To Pray or Not

Picture a public school classroom. Total silence. Some young people staring out the window. Others with eyes tightly closed. Still others silently reading their homework assignments before their day begins.

Such might be the scene if Re-

publican Rep. James Smith of Grand Blanc has his way.

Smith wants to make silent meditation a part of the public school system in Michigan—thus permitting those who so desire to pray in silence without conflicting with the U.S. Supreme Court ruling against prayer in public schools.

Patterned after a law adopted in Connecticut last year, Smith's proposal specifies no religious activity at all. It also clearly states that meditation is voluntary—not required.

"I think it's too bad that some kind of silence for thought isn't provided for those who want it," says Smith. "I think it's important for our young people. Most of them need to have some kind of quiet thought before entering any activity."

The Michigan House and Senate open each of their sessions with an invocation by a member of the clergy or a legislator.

### Change in Store?

Toward the end of this decade, Michigan's hiring policies may undergo quite a change.

State Personnel Director Richard A. Ross has named a special committee to look into ways to revise current methods of filling Michigan civil service jobs.

The committee study, expected to take about two years, will consider—

—establishment of a career counseling service.

—adoption of a skills data bank which will enable persons to apply for employment rather than apply for examinations for jobs.

—development of a certification process calling for constant updating and purging of employment lists.

## Chelsea Girl Participating In Marathon

A 1975 graduate of Chelsea High school is currently preparing as one of 40 students and faculty members at Southern Utah State College who will be running for the upcoming March of Dimes Marathon-Telerama in Salt Lake City.

Jill Steward, daughter of Mr. and Mrs. Francis Steward of 11301 Seab Church Rd., has vigorously planned and prepared for SUSC's 320-mile run up Highway 89 to Salt Lake City.

The marathon is being held in conjunction with KSL-TV annually sponsored to raise money for the March of Dimes.

SUSC male runners will take 10-mile jaunts, while the ladies will run five miles in a relay manner. The runners will leave Cedar City Jan. 30, and arrive in Salt Lake City on Feb. 1.

Students at SUSC originated the marathon idea last year and received \$7,500 on their first trip. This year several other Utah colleges and high schools will participate in the marathon and will cover some 1,300 miles altogether.

Jill is a freshman at Southern Utah State College majoring in Forestry Management. She is also active in horseback riding and motorcycling.

The SUSC photo-journalism class will prepare a narrated 10-minute film presentation of the marathon. The film footage, which will be shot from helicopters, will then be sent to the March of Dimes. Headquarters for national distribution.

## JUST REMINISCING

Items Taken from the files of The Chelsea Standard

### 4 Years Ago...

Thursday, Feb. 7, 1972—

Terri D. Eisenhahn, a senior at Chelsea High school, has been named the school's Betty Crocker Home Baker of Tomorrow for 1972.

Jeanne Haselschwardt of Chelsea High school was recently awarded the DAR Good Citizen award for 1972.

In a special candlelight ceremony, Dennis Thompson and Dirk Borton were inducted into Boy Scout Troop 415. Conducting the ceremony was Scoutmaster Jim Brannan.

Specialist 5 Gary H. Grossman, son of Mr. and Mrs. Hans Grossman of Madison St., was honorably discharged from the U. S. Army, at Oakland Army Base, Calif.

### 14 Years Ago...

Thursday, Feb. 5, 1962—

M. J. Anderson, a past governor of the Michigan District of Kiwanis International, inducted his son, Fred Anderson, into membership in the Kiwanis Club of Chelsea at the regular weekly dinner meeting Monday evening. Edwin Green-Leaf was also inducted by Anderson as a new member of the Chelsea Club.

A year of special work for the church was culminated on Boy Scout Sunday, Feb. 11 with presentation to Don Dickelman of the Boy Scout honor award "Pro Deo et Patria," For God and Country. Don is the son of Mr. and Mrs. Edwin Dickelman.

Mr. and Mrs. Dillman Wahl were in Chicago the past week-end to attend a dinner designated as a "victory dinner" at the Executive House dining room. Mr. Wahl was one of several Sinclair Refining Co. marketers honored at the affair for their achievement in sales during the past six months.

A total of 39 members of the Chelsea Community Farm Bureau February meeting which took place at the home of Mr. and Mrs. Walter Zeeb, Jr.

got to much give in our Government mixture.

Yours truly,

Uncle Lew

### 24 Years Ago...

Thursday, Feb. 14, 1952—

Leo Johnson has been appointed science and mathematics teacher at Chelsea High school to replace Edward Benjamin who resigned to take a position with the Eberbach Pharmacy of Ann Arbor.

Chelsea High school's debate team completed their first year of competition last week with a split decision at Onstead. Members on the local team are Barbara Speer, Sandra Baldwin, Jean Schweinfurth and David Bertke.

Mrs. Ren Hutzel, a member of the local VFW auxiliary, was elected Sixth District treasurer at the VFW Rally held in Dundee last Sunday.

Raymond Parsons has assumed the management of the Chelsea Restaurant located at the corner of South Main and Old US-12, which has been operated for sometime by Mrs. Edith Stoll.

### 34 Years Ago...

Thursday, Feb. 12, 1942—

Robert G. Foster, who recently accepted a position as government inspector in the Federal Screw Works, resigned from the office of Sylvan township clerk and Walter F. Kantlehner was appointed by the Township Board to fill the vacancy.

R. A. McLaughlin has installed a new Weaver wheel balancing machine at his super service station. This machine removes all shimmy and wheel tramp and prolongs the life of tires, as well as adding safety and comfort to driving.

Mrs. Oscar Lindauer celebrated her husband's birthday anniversary on Friday by entertaining 52 neighbors and friends at their home in Lima township. Cards furnished entertainment, and the hostess served refreshments.

The Tachez club was entertained at the home of Mrs. Norbert Merkel on Monday evening. Honors in 500 were won by Mrs. J. V. Burg and Mrs. Herbert Roy.

Mrs. Armin Schneider received high score in bridge.

Vietnam era veterans are more determined to receive education and receive GI benefits than their counterparts from World War II and the Korean Conflict. Participation rates under the current GI Bill show that 60 percent of those eligible have enrolled in some form of training. Over 4.8 million Vietnam veterans have taken training. The participation rate for 43.4 percent for 13 years of the Korean Conflict bill and 50.5 percent for the 42 years of the original World War II bill.

Why you should let H&R Block worry about your income taxes.

We're human, and once in a great while we make a mistake. But if our error means you must pay additional tax, you pay only the tax. We pay any interest or penalty. We stand behind our work.

Get a little peace of mind. H&R BLOCK THE INCOME TAX PEOPLE

105 N. MAIN ST. CHELSEA, MICH. 475-2752

7980 ANN ARBOR ST. DEXTER, MICH. 426-4313

200 RIVERSIDE MANCHESTER, MICH. 428-7833



WBA SUNS: Coached by Phil Bareis, standing, from left, are Jeff Chandler, Karen rear center, members of the Biddy basketball team. Standing, from left, are Brad Bauer, Mark Bareis, kneeling, from left, are Brad Bauer, Mark Bareis, Bonnie Johnson, Mark Ahrens and Mike Feeney.

## District Court Proceedings

Week of Jan. 27-Feb. 2

Barry Jochowski pled guilty to charges of making an improper left turn. Fines and costs, \$22.

David Hill pled guilty to charges of failing to report a property damage accident. Fines and costs, \$30.

Dorothy Bell was sentenced to pay fines and costs of \$250, to one year probation with no drinking and to attend the Alcohol Safety Action Program on charges of impaired driving.

Frank Gabriel was found guilty of speeding. Fines and costs, \$28 and six months probation.

Clifford Warty was found guilty of speeding. Fines and costs, \$24.

David Kempf was found guilty of speeding. Fines and costs, \$34.

Robert M. Zimmerman was found guilty of speeding. Fines and costs, \$22.

Francis Ferrier pled guilty to charges of failing to stop within a safe assured distance ahead. Fines and costs, \$22.

Francis Ferrier pled guilty to charges of leaving the scene of an accident. Fines and costs, \$75.

Jackie Johnson pled guilty to charges of possessing open intoxicants in a motor vehicle. Fines and costs, \$35.

David Liehty pled guilty to charges of driving with an expired operator's license. Fines and costs, \$27.

Kenneth Torrey pled guilty to charges of driving without an operator's license on his person. Fines and costs, \$17.

Marjorie Velas was found guilty of driving with license suspended. Fines and costs, \$50.

Mark Robert pled guilty to charges of having a dog at large. Fines and costs, \$17.

Terrance Zalunzyck was sentenced to pay fines and costs of \$100 on charges of the use of marijuana.

Robert Sayer, Jr., pled guilty to charges of careless driving. Fines and costs, \$35.

guilty of speeding. Fines and costs, \$22.  
Lewis Franklin Baker pled guilty to charges of violating the basic speed law. Fines and costs, \$22.  
Michael Kurth pled guilty to charges of violating the basic speed law. Fines and costs, \$22.  
Donald E. Murphy appeared on a bench warrant and pled guilty to charges of no proof of registration. Fines and costs, \$27.  
Dan Holloway pled guilty to charges of failing to yield access. Fines and costs, \$22.  
Robert E. Huger was found guilty of speeding. Fines and costs, \$28.

## THE CAPTAINS TABLE

features these

### NIGHTLY SPECIALS

MONDAY—THE GERMAN PLATTER

Knockwursts, Sauerkraut, our own German Potato Salad, Roll and a trip to the SALAD BAR. \$3.00

TUESDAY—DEEP-FRIED CHICKEN

All the Chicken you can eat, French Fries, Biscuits, and a trip to the SALAD BAR. \$2.95

FRIDAY—SEAFOOD PLATTER

Shrimp, Scallops, and Lake Perch served with potato or vegetable and a trip to the SALAD BAR. \$3.95

## THE CAPTAINS TABLE

8093 Main St., Dexter Ph. 4426-3811

Monday-Wednesday 6 a.m. to 9 p.m.  
Thursday-Friday 6 a.m. to 10 p.m.  
Saturday 7 a.m. to 9 p.m.  
CLOSED SUNDAY

## DUNBAR'S DEXTER LOCKER

PAUL DUNBAR, OWNER

8083 MAIN ST., DEXTER

PHONE 426-8466

BEEF PRICES ARE DOWN! - BUY NOW!

BEEF SIDES. lb. 85¢

(includes all processing—ready for the freezer)

YOU'LL GET:

10 round steaks  
8 sirloin steaks  
6 porterhouse  
12 T-bone steaks  
6 sirloin tips

3 Swiss steaks  
6 chuck steaks  
2 rib roasts  
12 rib steaks  
4 rump roasts (boneless)

5 chuck roasts  
3 arm round roasts  
2 English roasts  
6 2-lb. short ribs  
6 1-lb. boneless beef stew  
80 lbs hamburger

(ESTIMATED NET TAKE HOME PRICE PER LB. - \$1.08)

## CHECK OUR NEW LAY-AWAY PLAN

Order your meat now - Pick up later

## YOU DON'T HAVE A FREEZER??

We have many lockers available—just \$2.50 per month.

Discount to Civic Groups - We Accept Federal Food Stamps

CUSTOM SLAUGHTERING PROCESSING

# Looking for a MORTGAGE?

Mortgage Rates Are DOWN

\$214,000 Available Daily for Home Loans

Act Now

Phone: 769-8300

ANN ARBOR FEDERAL SAVINGS

10 OFFICES TO SERVE YOU IN: ANN ARBOR, CHELSEA, DEXTER, MANCHESTER, YPSILANTI, BRIGHTON, SALINE

Member FSLIC







**MAGICIAN'S BOX:** Doug Beaumont, Dennis Petsch and Matt Diederich lean on the Magician's box they have recently created for the Chelsea High school's production of "Carnival." The box is just one of many of the sets designed by Neil Cockerline and constructed by his crew for the March performance.

## Set Builders Are Preparing For 'Carnival'

The musical "Carnival" to be presented by Chelsea High school, will open Thursday, March 18 in the high school auditorium, and will continue Friday and Saturday, March 19-20.

"Carnival" takes place in Europe between World War I and II. This background has made set construction a special challenge to set designer Neil Cockerline. It also presents a challenge to the set builders, which includes director DiAnn L'Roy, Doug Beaumont, Matt Diederich, Dennis Petsch, Rob Wenk and Howard Salyer.

Sets for "Carnival" consist of European wagons, carnival banners, tents, and side show sets and props.

The "stagies" as they refer to themselves, have been involved in the set building with most of the plays and musicals at Chelsea High school. They have been hard at work on "Carnival" sets since December. Their many long hours of hard work will hopefully add the sparkling touch to the show.

"Carnival" is a unique musical in that all scene changes will be made in front of the audience by the Roustabouts. The Roustabouts include Doug, Matt, Dennis, and Rob, along with Matt Merkel and Steve Pennington. In a European carnival the Roustabouts' jobs are to do all the moving of the equipment and to set up the tents and shows.

Tickets for Chelsea High school's presentation of "Carnival," written by Michael Sewart with music by Bob Merrill, will go on sale the first Monday in March.

## Chelsea Winners Named in Farm Bureau Essay Contest

Three Beach Middle school students have earned the school's first, second- and third-place awards for their entries in the seventh annual Freedom's Foundation America and Me essay contest, sponsored by Farm Bureau Insurance Group.

The three top essayists, who will receive honor certificates for their achievement are Sarah Haselschwardt, first; Debbie Koepke, second; and Carol Watson, third.

A plaque engraved with the name of the school's first-place winner will also be presented to the school.

Nearly 6,000 eighth grade students from 318 Michigan schools submitted entries in this year's contest, which is conducted with the help of Farm Bureau Insurance agents across the state.

As the school's first-place winner, Sarah's essay has been entered into the state-wide competition from which 10 state winners will be selected. Prizes for the top 10 in the state include a \$500 savings bond, \$250 in savings bonds for second place, \$100 bonds for third, fourth and fifth place, and \$50 bonds for each of the remaining essayists in the top 10.

A notable panel of judges, headed by Gov. William Milliken, will determine the top winners. Other members of the judging panel are Secretary of State Richard Austin; U. S. Congressman M. Robert Carr; State Senator Earl Nelson; Michigan State University President Clifton Wharton, Jr.; and University of Michigan President, Robben Fleming.

In addition to the prizes for the

students, the schools of the top three essayists in the state will receive a large U. S. flag for display.

Started by Farm Bureau Insurance Group in 1968, the annual contest gives Michigan's young people a chance to seriously consider their role in America's future through "America and Me" essays. The contest is open to any 8th grader in Michigan.

As sponsor of the contest, FBIG has received the George Washington Medal from the Freedom's Foundation at Valley Forge five years in succession.

### "LONG LIVE AMERICA"

By Sarah Haselschwardt

As I'm getting older, I'm learning more and more things every day about my country and my changes taking place all over. As I look around me I can see many new things. I can see all of the good things like the beautiful scenery of our country, the little animals in the forests, the bright-lit cities, all the way down to the small home towns. But more importantly I can see problems facing America, such as, poverty, unemployment, inflation, pollution and crime.

I was born an American citizen, and I'm proud of that fact. Now that I'm older, I want to get involved in things happening in America. I want to become more and more a part of our great nation. I think that it is an American's duty to care, and to want to help. I know that there are lots of people who take America for granted and don't realize it's

in need of everyone's help. But there are always those who are trying to do something for their America. That's the kind of person that I would like to be.

America is a beautiful country, beautiful and free. I just wish everyone could feel that way about it. I think everyone should respect their country, their freedom, and their role in selecting our leaders. I know that I will.

America is my country, and I have a whole lifetime to live in it, to care about it, to share it, and to really be a part of it. I think that I'll get started right now!

### Cagers Lose...

(Continued from page one) mere 29 percent floor shooting and a hot much better 54 percent from the foul line. "We were beat on the boards and just not shooting well," remarked Ballisere.

Scoring as usual in the double figures was Randy Guenther who racked up 20 points. Of the 16 field goals the Bulldogs had, Guenther put in nine. Also contributing to the score was Tony Robards who had six points, Dean Thompson, Don Morrison and Anthony Houle each put in four points. Pete Feeney had two points as did Jeff Sweet. High rebounder for the game was Robards, who managed to snag 10.

A person's joy over the cheapness of an article often depends on how long he has used it.

## Fun Fair...

(Continued from page one)

and nibbling on this and that, a bingo game, a silhouette room and the "scariest" spook house dreamed up and concocted by the teachers.

Mrs. Koch said that "everyone" participated and added that the children had a great time. "We didn't expect our success to be so great," she concluded.

## Recreation Basketball Results

Wednesday, Feb. 4—  
Mark IV 83, 3-D Sales 49  
Chelsea State Bank 63, North American Rockwell 53  
Dana 56, RETS 45  
Monday, Feb. 9—  
Mark IV 56, RETS 49  
Captains Table 47, 3-D Sales 35  
Chelsea State Bank 37, Wolverine Prairie Chicken 34.

## LIVE-AY GIFTS

★ Diamonds ★ Watches  
★ Opals ★ Clocks  
★ Hallmark Cards

★ Expert Watch and Ring Repair

20% OFF  
On All Jewelry

**LEWIS JEWELERS**

Maple Village Shopping Center  
Maple and Jackson Rds., Across from Fox Theatre  
Mon., Thurs., Fri., 9:30 to 9  
Tues., Wed., Sat., 9:30 to 6  
Free Parking  
Ann Arbor 994-5111

GROCERIES  
FRESH MEATS  
VEGETABLES  
BEER - WINE  
LIQUOR

OPEN  
7 DAYS  
A  
WEEK

# Jiffy market

Big Enough To Serve You... Small Enough To Know You!

CORNER OF SIBLEY & WERKNER RDS. ... CHELSEA, MICHIGAN

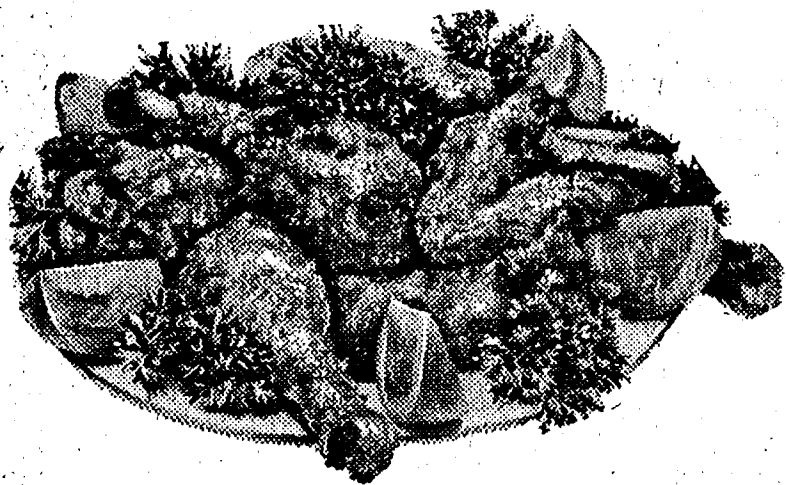
PHONE 475-5701

HOURS: 7 a.m. to 10 p.m. DAILY  
7 DAYS A WEEK

WE ACCEPT  
U.S.D.A. FOOD STAMPS

SALE PRICES EFFECTIVE  
Thurs., Feb. 12 thru Sun., Feb. 15

TOP QUALITY  
MERCHANDISE  
No Stamps - No Coupons  
Just Friendly Service  
From Friends  
and a Thank You!



## FRYING CHICKENS

U.S.D.A. GRADE A

Whole Chicken **45<sup>c</sup> lb.**

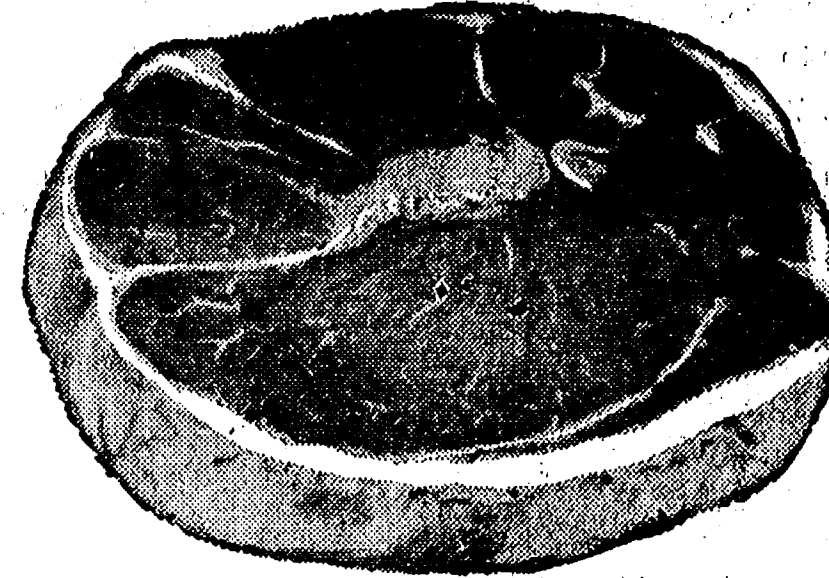
YOUNG - LEAN - TENDER

## PORK BUTTS

4 to 6-Lb. Average **\$1<sup>09</sup> lb.**

## Boneless Pork Butt

4 to 6-Lb. Average **\$1<sup>19</sup> lb.**



U.S.D.A. CHOICE

## ROUND STEAK

Full Cut Round **\$1<sup>39</sup> lb.**

Top Round **\$1<sup>49</sup> lb.**

HOME-MADE  
**PORK SAUSAGE**  
Reg. or Garlic  
**\$1.29 lb.**

BALL PARK  
**FRANKS**  
Reg. or All Beef  
1-Lb. Pkg. **\$1<sup>09</sup>**

GOOD OLD FASHION  
**SLAB BACON**  
Whole Slab **99<sup>c</sup> lb.**

HERRUD'S  
**Chunk Bologna**  
**79<sup>c</sup> lb.**

ECKRICH  
**SMOKY-LINKS**  
and  
All-Beef Smokettes  
10-Oz. Pkg. **89<sup>c</sup>**

In Chelsea it's  
Jiffy Market  
for U.S.D.A.  
Choice Meats

FRESH GROUND LEAN  
**HAMBURGER**  
**79<sup>c</sup> lb.**

YOUNG TENDER  
**BEEF LIVER**  
**45<sup>c</sup> lb.**

FARM MAID  
**Half and Half** . . . qt. **49c**

8-Oz. Jiffy  
**Muffin Mix** . . . . . **19c**

OUR FAVORITE, 1 Lb., 1 Oz.  
**Sweet Peas** . . . . . **19c**

4-Oz. Can Camelot  
**Black Pepper** . . . . . **49c**

ORIGINAL  
**Alka-Seltzer, 25 tablets** . **69c**

SAVE 50c—Baby Shaped Diapers 24-count  
**Kimbies, Tod'ler Daytime** **\$1.79**

MICHIGAN PIONEER BRAND  
**Sugar** . . . . . **5 lbs. 98c**

4-Roll Pack Northern  
**Bathroom Tissue** . . . . . **69c**

LARGE SELECTION  
**Magazines and Pocket Books**

10 1/2-Oz. Compline  
**Miniature Marshmallows** . **29c**

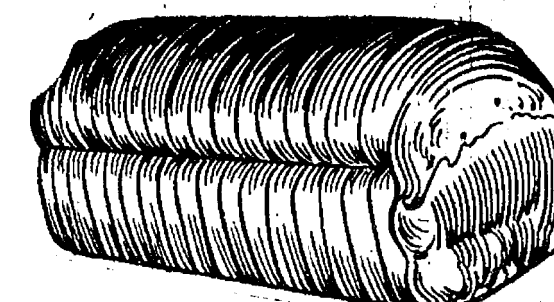
1-Lb. 2-Oz. Pkg. Camelot  
**Quick Oats** . . . . . **39c**

4-Oz. Pkg. NEW PURINA CO.  
**Whisker Cat Food** . . . **35c**

## JIFFY MARKET SPECIAL!! WONDER ENRICHED BREAD COUNTRY STYLE

LARGE 1 1/4-LB. LOAF

**29<sup>c</sup>**



COUNTRY  
STYLE  
KIDS LOVE WONDER  
FREE LICENSE PLATE  
in each loaf

## COCA-COLA

8 1 Pint No-Return Bottles **\$1<sup>39</sup>**

EQUALS ONE GALLON

## POTATO CHIPS

9-Oz. Bag **49<sup>c</sup>**

## MILK

gal. **\$1.39**

## U.S.D.A. Choice Freezer Beef

SIDES - FRONTS - HINDS - LOINS - FULL RIB

Cut, Wrapped, Frozen To Your Specifications.

LOCAL FARM BEEF FOR SALE.

CORN-FED BEEF AT ITS BEST!

Custom Cutting, Grinding, Wrapping and Freezing

## YOUR BEEF

QUICK SERVICE on HAULING and SLAUGHTERING



## JIFFY MARATHON GAS PUMPS

OPEN 7 DAYS - 7 a.m. to 10 p.m.

Regular Gas **55.9** Lead Free or Premium Gas **57.9**

(Gas prices include all taxes)

THANK YOU — We Appreciate Your Business.

2-Lb. Jar Smooth or Crunchy  
**Velvet Peanut Butter** . **\$1.29**

SUN GLO ASSORTED FLAVORS 1 PT., 12 OZ.  
**Soda Pop** . . . . . **3 for \$1.00**

WAY BAKING CO.—1 1/4-LB. LOAF  
**Kleen-Maid Bread** . . . . . **39c**

Campbell's  
**Tomato Soup** . . . 3 cans **49c**

Miracle Whip  
**Salad Dressing** . . . qt. **89c**

Strained Fruits, Vegetables  
**Gerber's Baby Foods** . jar **15c**

Easy Monday  
**Dish Lotion** . . . . . qt. **49c**

U. S. NO. 1  
**Potatoes** . . . . . 5 lbs. **39c**

15-Oz. Jar Camelot  
**Apple Sauce** . . . . . **25c**

Camelot  
**Saltines** . . . . . 1-lb. box **39c**

U. S. NO. 1  
**Jonathan Apples** . . . 3 lbs. **49c**

First of the Season  
**Garden Seeds** . Asstd. Prices



## + Services in Our Churches +

**ST. PAUL UNITED CHURCH OF CHRIST**  
The Rev. R. J. Raizlaff, Pastor  
Thursday, Feb. 12—  
7:00 p.m.—to 8:30 p.m.—Junior High Fellowship.  
7:30 p.m.—Spiritual Life department.  
Saturday, Feb. 14—  
9:00 a.m. and 10:15 a.m.—Confirmation.  
Shrine Circus, Joyful Noise and Junior Choirs.  
Sunday, Feb. 15—  
9:00 a.m. and 10:30 a.m.—Church school.  
10:30 a.m.—Worship. Annual meeting, Junior and Chancel Choirs will sing.  
Tuesday, Feb. 17—  
1:00 p.m.—Needle and Thread.  
3:30 p.m.—Joyful Noise.  
7:30 p.m.—Council.  
Wednesday, Feb. 18—  
1:00 p.m.—World Wide.  
3:30 p.m.—Junior Choir.  
8:00 p.m.—Chancel Choir.

**FIRST UNITED METHODIST**  
Parks and Territorial Rds.  
Every Sunday—  
9:15 a.m.—Morning worship.  
10:00 a.m.—Sunday school.

**ZION LUTHERAN CHURCH**  
Corner of Fletcher, Waters Rds.  
The Rev. John R. Morris, Pastor  
Thursday, Feb. 12—  
7:30 p.m.—Holy Communion instruction.  
Saturday, Feb. 14—  
9:15 a.m.—Youth Instruction, 7th and 9th grades.  
10:45 a.m.—Junior Choir.  
1:00 p.m.—Senior Citizens.  
6:00 p.m.—Burkhardt-Binder wedding.  
Sunday, Feb. 15—  
9:00 a.m.—Sunday school.  
10:15 a.m.—Worship.  
7:00 p.m.—Luther League.  
Monday, Feb. 16—  
8:00 p.m.—Senior Choir.  
Tuesday, Feb. 17—  
10:00 a.m.—Sewing Activity.  
Noon pot-luck.  
Wednesday, Feb. 18—  
9:30 a.m.—Huron River Conference Pastors.  
Thursday, Feb. 19—  
7:30 p.m.—Holy Communion instruction.

**METHODIST HOME CHAPEL**  
Chaplain Ira Wood, Pastor  
Every Sunday—  
8:45 a.m.—Worship service.

**FIRST UNITED METHODIST CHURCH**  
The Rev. Marvin H. McCallum, Pastor  
Thursday, Feb. 12—  
9:00 a.m.—United Methodist Women Executive Board will meet in the social center of the church. Babysitting will be available.  
1:00 p.m.—Church Women United Executive Board will meet in the Litteral room.  
6:30 p.m.—Weight Watchers will meet in the social center of the church.  
7:30 p.m.—The Administrative Board will meet in the Educational Unit.  
Sunday, Feb. 15—  
10:00 a.m.—Worship service. Nursery provided.  
1:30 p.m.—Church school. Four years through 6th grade.  
11:00 a.m.—Coffee and punch hour.  
11:15 a.m.—Junior, Senior High and adult church school.  
7:00 p.m.—Praise Choir.  
Monday, Feb. 16—  
7:30 p.m.—Training session for church school teachers.  
Tuesday, Feb. 17—  
9:30 a.m.—Charismatic Bible Sharing group will meet in the Educational Unit.  
Wednesday, Feb. 17—  
9:00 a.m.—Sarah Circle will meet at the home of Mrs. Mary Lou Haliburton. Elizabeth Circle will be guests.  
1:00 p.m.—Ruth Circle will meet in the Crippen Building. Phoebe Circle will meet at the home of Mrs. Leah Smith.  
3:30 p.m.—Kinder Choir.  
4:00 p.m.—Glory Choir.  
7:30 p.m.—Educational Committee will meet in the Litteral room.  
8:00 p.m.—Chancel Choir.  
Thursday, Feb. 18—  
6:30 p.m.—Weight Watchers will meet in the social center of the church.

**CONGREGATIONAL CHURCH**  
(United Church of Christ)  
The Rev. Carl Schwarm, Pastor  
Thursday, Feb. 12—  
1:00 p.m.—Rachel Chapter at the church.  
Sunday, Feb. 15—  
9:45 a.m.—Choir.  
10:30 a.m.—Worship service.  
7:00 to 9:00 p.m.—Teacher Workshop in Manchester.  
Tuesday, Feb. 17—  
7:30 p.m.—Church Council.

**OUR SAVIOR LUTHERAN CHURCH**  
1515 S. Main, Chelsea  
The Rev. William H. Keller, Pastor  
Thursday, Feb. 12—  
7:30 p.m.—Choir.  
Sunday, Feb. 15—  
9:00 a.m.—Sunday school and Bible classes.  
10:30 a.m.—Worship.  
Wednesday, Feb. 18—  
4:00 to 6:00 p.m.—Confirmation.  
Thursday, Feb. 19—  
7:00 p.m.—Choir.

**CHELSEA BAPTIST CHURCH**  
377 Wilkinson St.  
The Rev. James Stacey, Pastor  
Every Sunday—  
9:45 a.m.—Sunday school for the whole family.  
11:00 a.m.—Morning worship service and children's church.  
7:00 p.m.—Evening service, informal singing, sharing, study and discussion. (Nursery care provided for all services).  
Home Bible Studies each week in the homes of the leaders.  
Teen Ministry, Sunday at 6 p.m. and study groups during the week.

**FIRST ASSEMBLY OF GOD**  
The Rev. Richard Coury, Pastor  
Every Sunday—  
9:45 a.m.—Sunday school.  
11:00 a.m.—Worship service.  
8:00 p.m.—Evening worship.  
Every Wednesday—  
Christ's Ambassadors. Missionettes. Bible meditation and prayer.

**SALEM GROVE UNITED METHODIST CHURCH**  
3320 Notten Rd.  
The Rev. Gerald R. Parker, Pastor  
Every Sunday—  
9:30 a.m.—Sunday school.  
10:30 a.m.—Worship service.

**IMMANUEL BIBLE CHURCH**  
145 E. Summit St.  
The Rev. LeRoy Johnson, Pastor  
Every Sunday—  
9:45 a.m.—Sunday school, nursery provided.  
11:00 a.m.—Morning worship, nursery provided.  
8:00 p.m.—Evening worship.  
Every Wednesday—  
7:00 p.m.—Family hour, prayer meeting, and Bible study.

**ST. THOMAS EVANGELICAL LUTHERAN**  
Elsworth and Haab Rds.  
The Rev. Jerome Dykstra, Pastor  
Thursday, Feb. 12—  
8:00 p.m.—Choir rehearsal.  
Sunday, Feb. 15—  
9:30 a.m.—Sunday school and Bible class.  
10:45 a.m.—Worship with Holy Communion.  
Tuesday, Feb. 17—  
10:00 a.m.—Bible study.  
Thursday, Feb. 19—  
4:15 p.m.—Confirmation class.  
8:00 p.m.—Choir rehearsal.

**ST. JOHN'S UNITED CHURCH OF CHRIST**  
Rogers Corners  
The Rev. Carl Asher, Pastor  
10:30 a.m.—Worship service.

**ST. BARNABAS EPISCOPAL CHURCH**  
2050 Old US-12  
The Rev. Fr. Jerrold F. Beaumont, B.S.P.  
Every Sunday—  
10:00 a.m.—Holy Communion (first, third and fifth Sundays, and 9 p.m. every Wednesday).  
10:00 a.m.—Morning prayer. Second and fourth Sundays. Church school and nursery every Sunday.  
Every Wednesday—  
9:00 p.m.—Study and discussion groups.  
First Wednesday of every month Bishop's Committee.  
Third Thursday of every month—Episcopal church women.

**ST. JACOB EVANGELICAL LUTHERAN CHURCH**  
12501 Rietmiller Rd., Grass Lake  
The Rev. Andrew Bloom, Pastor  
Every Sunday—  
9:00 a.m.—Worship service.  
10:15 a.m.—Divine services.

**NORTH SHARON BIBLE CHURCH**  
Sylvan and Washburne Rds.  
The Rev. William Ensen, Pastor  
Every Sunday—  
10:00 a.m.—Sunday school. (Nursery will be available.) Junior church classes.  
11:00 a.m.—Worship service.  
6:00 p.m.—Senior High Youth meeting. Youth Choir.  
7:00 p.m.—Evening worship service. (Nursery available.)  
All services interpreted for the deaf.  
Every Wednesday—  
7:00 p.m.—Bible study and prayer meeting. (Nursery available.)  
Bus transportation available: 428-7222.

**WATERLOO VILLAGE UNITED METHODIST CHURCH**  
818 Washington St.  
Every Sunday—  
11:15 a.m.—Worship service.

**NORTH LAKE UNITED METHODIST CHURCH**  
The Rev. David Stiles, Pastor  
Every Sunday—  
8:30 a.m.—Early service.  
10:00 a.m.—Worship service. Receiving of new members.  
10:00 a.m.—Sunday school.

**FIRST UNITED PRESBYTERIAN CHURCH**  
Unadilla  
The Rev. T. H. Liang, Pastor  
Every Sunday—  
9:45 a.m.—Sunday school.  
11:00 a.m.—Worship service.

**CHURCH OF CHRIST**  
1306 Old US-12, East  
Evangelist John M. Hamilton.  
Every Sunday—  
10:00 a.m.—Church school.  
11:00 a.m.—Worship service. Nursery will be available.  
6:00 p.m.—Worship service.  
Every Wednesday—  
7:30 p.m.—Bible study.

**ST. MARY CATHOLIC CHURCH**  
The Rev. Fr. David Philip Dupuis, Pastor  
Mass Schedule:  
Every Saturday—  
4:00-5:00 p.m.—Confessions.  
7:00 p.m.—Mass.  
Immediately after 7 p.m. Mass—Confession.  
Every Sunday—  
Winter schedule:  
7:00, 9:00, 11:00 a.m.—Mass.

**BAHA'I FIRESIDE**  
Every Thursday—  
8:00 p.m.—At the home of Toby Peterson, 705 S. Main St. Anyone wishing to learn about the Baha' faith is welcome.

**BETHEL EVANGELICAL AND REFORMED CHURCH**  
(United Church of Christ)  
Freedom Township  
The Rev. Roman A. Reineck, Pastor  
Every Sunday—  
10:00 a.m.—Worship service.

**ST. JOHNS EVANGELICAL AND REFORMED CHURCH**  
(United Church of Christ)  
Francisco  
The Rev. Virgil King, Pastor.  
Every Sunday—  
10:30 a.m.—Worship service.  
Sunday school.

**FIRST CHURCH OF CHRIST SCIENTIST**  
1853 Washtenaw Ave., Ann Arbor  
Every Sunday—  
10:30 a.m.—Sunday school, morning service.

**GREGORY BAPTIST CHURCH**  
The Rev. Paul White, Pastor  
Every Sunday—  
9:45 a.m.—Sunday school.  
11:00 a.m.—Morning worship.  
6:00 p.m.—Young people.  
7:00 p.m.—Evening worship.  
7:30 p.m.—Thursday mid-week worship service.

**CHURCH OF JESUS CHRIST OF LATTER-DAY SAINTS**  
Meetings at  
St. Barnabas Episcopal Church  
2050 Old US-12  
Every Sunday—  
11:00 a.m.—Priesthood meeting.  
12:30 p.m.—Sunday school.

**1975-76 Basketball Schedule**  
Feb. 13—Milan\* .....away  
Feb. 20—Dexter\* .....home  
Feb. 27—Saline\* .....home.  
\*League games.  
All home basketball games begin at 8:30 p.m. in the gymnasium for the junior varsity team and approximately 8 p.m. for the varsity.

Fashions for women are still in what might be termed the "look-and-see" era.  
Subscribe today to The Standard!



### Ronald Adams Named to Gelman Board

At the annual meeting of stockholders of Gelman Instrument Co., on Jan. 31 in the Ann Arbor plant, Ronald J. Adams of North Lake was elected to the Gelman Board of Directors.

Adams will continue as the executive vice-president of the Ann Arbor based manufacturing firm. Gelman has subsidiaries in Italy, France, Great Britain, and Australia. The company specializes in filtration products and medical laboratory aids.

One of six board members elected by the Gelman stockholders, Adams joined Gelman in January 1972 as the company treasurer. In 1973 he was named vice-president, finance and treasurer. In 1975, he became the Gelman executive vice-president.

Adams holds a BS in accounting and a master's degree in business administration from Cleary College. In 1961 he was named one of the Outstanding Young Men in America by the national Junior Chamber of Commerce. In 1974 he was included in "Who's Who in America." Before joining Gelman, Adams held financial and corporate management positions with a number of firms including the Ford Motor Co.

He resides with his wife, Ann, at 7250 Noah's Landing. Mr. and Mrs. Adams have a son, Ronald Jay, who is currently a junior at Eastern Michigan University. Their daughter, Susan, is a graduate of the John Hopkins School of Nursing and is currently a registered nurse in West Palm Beach, Fla.

**LOSE UGLY FAT**  
Start losing weight today or money back. MONADEX is a tiny tablet and easy to take. MONADEX will help curb your desire for excess food. Eat less—weigh less. Contains no dangerous drugs and will not make you nervous. No strenuous exercise. Change your life... start today. MONADEX cost \$3.00 for a 20 day supply. Large economy size is \$5.00. Also try AQUATABS: they work gently to help you lose water-bloat. AQUATABS—a "water pill" that works—\$3.00. Both guaranteed and sold by:  
CHELSEA DRUG STORE  
101 N. Main St. • Mail Orders Filled

**Faster gains from better FEEDS**

Calves get growing and gaining faster, on our balanced, fortified Calf Feed... enriched with needed vitamins, minerals.

Complete feeding rations for all your livestock, poultry.

**FARMERS' SUPPLY CO.**  
PHONE 475-1777

**The Country Pulpit:**

## SECURITY

Continual uncertainty is mental torture. It is a psychological fact that people are healthier and happier when they are secure.

Only in recent years have psychologists and psychiatrists begun to analyze man with a new dimension in mind. This new important dimension is "Faith." "Faith in a Supreme Being," they say, "brings stability and security."

No one knows better than God, our Creator, how harmful it is for man to continually feel uncertain. God never intended for His creatures to be insecure, and man never was—until he sinned and turned his back on God.

God didn't let it go at that, however. In His great love, He made a marvelous provision for mankind, so that they need not grope blindly for something on which they might stake their future. God made the supreme sacrifice—He gave His own Son, Jesus Christ, to die for our sins. When we trust in His shed blood we are forgiven. We are then the sons of God—and we are assured of an eternity with Him.

Come unto me, all ye that labour and are heavy laden, and I will give you rest.

Take my Yoke upon you, and learn of me; for I am meek and lowly in heart; and ye shall find rest unto your souls.

For my yoke is easy, and my burden is light. Matthew 11:28-30.

## IMMANUEL BIBLE CHURCH

145 E. Summit St. Chelsea, Mich. 48118

**Advertise Your Auction in The Standard To Assure A Good Attendance!**

## SAVE MONEY WITH A QUALITY PAINT

**COVERS MORE...LOOKS BETTER...LASTS LONGER!**

That's right! Quality Dutch Boy House Paint actually saves you money. It covers more surface area because it has superior hiding power. It looks better, too! Its tough, brilliant finish wears slowly and evenly. Resists cracking and peeling. Keeps costly maintenance way down. So get the most for your money! Get quality! Get Dutch Boy House Paint!

more years to the gallon

Try our new Dutch Boy Super White House Paint. New formula prevents alk staining on such surfaces as brick, stucco, etc.

You will remember the quality of Dutch Boy paints long after the price is forgotten.

**MERKEL Home Furnishings**

**WIDE CHOICE OF COLORS & PATTERNS**

## Wallpapers

**DURING OUR SPECIAL SALE**

## 5-10-20% OFF

**DURING FEBRUARY**

Special Discounts on

## KEM-GLO and KEM-TONE PAINT

**D. E. HOEY & SONS**

## Ace Hardware

3515 Broad St., Dexter Ph. 426-8119

**Q. What's the lowest-priced pickup made in America?**

**A. Dodge D 100. Only \$3,677. Manufacturer's suggested retail price. And that beats both Ford and Chevy. (Based on manufacturers' suggested retail prices for 6 cyl. half-ton pickups excluding optional equipment, state and local taxes, destination charges.)**

**Q. Which full-size pickup got the best gas mileage?**

**A. Dodge. 25 MPG on the highway, 18 in the city. Estimated EPA mileage for a '76 Dodge D 100 (225/6 cyl. engine, manual transmission). Actual mileage depends on driving you do, driving habits, truck's condition, optional equipment.**

**Q. Which full-size pickup has the biggest standard payload?**

**A. Dodge D 100. Without beefing it up one bit, you can haul off a whopping 1,505 pounds.**

## Dodge Dodge Trucks

**The trucks with all the answers are waitin' down at Dodge.**

**Dodge**  
AUTHORIZED DEALERS

**VILLAGE MOTOR SALES, INC.**  
1185 MANCHESTER ROAD CHELSEA, MICHIGAN

**THE DODGE BOYS**



## Hone - Gauss Vows Spoken In Plymouth

Juliette Susan Hone and Ronald E. Gauss were joined in marriage Dec. 27 at St. John's Episcopal church in Plymouth.

The former Miss Hone is the daughter of Mr. and Mrs. Stanley B. Hone of Plymouth. Mr. Gauss is the son of Mr. and Mrs. Ernest A. Gauss of 19328 Ivey Rd.

The Rev. Robert Shank presided over the 5 p.m. ceremony attended by 50 guests.

The bride chose an ivory gown in satin with lace trim at the bodice, neckline and sleeves. An old-fashioned picture had completed her costume. She carried an ivory prayer book which belonged to her great-grandmother.

Sara Williams, the bride's sister, of Des Moines, Ia., served as the matron of honor. Brent Mickler of Highland was best man.

Karl Gauss, the bridegroom's brother, and Karen Davies of Davies of Plymouth were ushers.

A reception immediately following the ceremony was held at the home of the bride's parents.

The bride is a 1974 graduate of Plymouth Salem High School. She attended Northwestern Michigan College.

Mr. Gauss is a 1973 graduate of Chelsea High School. He has attended Washtenaw Community College and Northwestern Michigan College.

If a child cannot hear properly at 2 to 6 years of age, the disability can affect its learning to speak clearly.

## Altar Society Plans Support for Antique Show

At the St. Mary's Altar Society meeting held recently it was announced that the Antique Show and Sale sponsored by the Washtenaw Deanery will be held at Holiday Inn West, Feb. 27, 28 and 29. Mrs. Dennis Guinan has tickets. Persons interested may contact her at 475-2417. Mrs. Guinan also asks the ladies to donate home-made breads for the sale.

The Washtenaw Deanery Quarterly meeting will be hosted by St. Mary's ladies with a pot-luck salad luncheon on March 16. All ladies of the parish are invited to attend.

Mrs. Leon Chapman presented a program of slides of her trip to Alaska.

Mrs. G. L. Staffan and her committee served refreshments at the close of the meeting.

## Beta Sigma Phi

Xi Gamma Mu chapter of Beta Sigma Phi met at the home of Shirley Trinkle Feb. 3. Vice-president Lavonda Hayes conducted the meeting. There were nine members present and a pledge.

Betty Koch presented a U. S. flag she crocheted to represent the chapter at upcoming Bicentennial activities.

Dorinda Brand gave her program on "A Woman Speaks, Through Her Books." She briefly detailed the life of Laura Ingalls Wilder and her contribution to literature in preserving an important part of our American heritage. Miss Brand also read excerpts from two of her books.

The next meeting will be held Feb. 17 at Jan Longworth's home.

## Club and Social Activities

### KINDER KLUB

Kinder Klub met Tuesday, Feb. 10 at the home of Veretta Whitaker. The club discussed two topics, "Values" and "Women Understanding Women." Discussion leaders were Nadine Koch and Veretta Whitaker. The club will be celebrating its 20th anniversary soon with a get-together of all the past presidents. It was decided by the members that this year's spring dinner will be held at the Gandy Dancer.

### CHILD STUDY CLUB

Chelsea Child Study Club met at the home of Ruth Nugent. Members and guests were entertained with a near Middle East dance called Beledia. Suheyla from the Art World in Ann Arbor was the dancer who demonstrated the beautiful flowing dance and told a little of its history. Guests for the evening were Lorraine Simon, Joyce Brosnan, Barbara Kaipp, Marilyn McCallum, Liz Rudazzo, Betty Dancer and Win Schumann. Following the demonstration, a short business meeting was held. Refreshments were served by Helen Thomas and Ruth Guenther.

A belated welcome to Carol Collins and Pat Stirling, our two new club members who joined us last November.

The next meeting will be hand-writing analysis at the home of Barbara Branch, with Thomas Killelea presenting the program.

### MODERN MOTHERS

Modern Mothers Child Study Club met Tuesday, Feb. 10 at the home of Sharon Hodgson. Co-hostesses were Marilyn Chasteen, June Flanagan and Carol Kvarnberg. "Transcendental Meditation" was discussed by Susan Strauss and Pringle Smith from the International Meditation Society in Ann Arbor. Mrs. Strauss is an instructor of TM and was trained by Maharishi Mahesh Yogi. Both emphasized that they feel better, happier and appreciate life more with the help of TM.

Gail Johnson, Joanne Carruthers and Kathy Love asked that their names be put on the waiting list for membership in the club. Other guests included Linda Baumann, Carol Kuzon, Ruth Dils and Peggy Moore.

The next meeting will be a panel discussion at the home of Nancy Sprague on Feb. 24.

## Elizabeth Belser Will Study in Munster, Germany

Elizabeth Belser, daughter of Mr. and Mrs. Frederick Belser of 216 Park St., will spend the fall and winter quarters of her junior year in Munster, Germany.

Miss Belser, now a sophomore at Kalamazoo College in Kalamazoo, will be part of a unique foreign study program offered by the KC and designed to give its students and inside view of another culture from an outside perspective.

At no cost to the students, this subsidized program has successfully placed 171 students in 28 different locations this year. The program is now in its 17th year.



**FIVE GENERATIONS:** When members of the Abdon, Wright and Houle clans gathered at the Cedar Knoll Rest Home last Saturday where they visited Mrs. Frank (Myrtle) Abdon they decided to photograph the five generations present. Pictured from left, Mrs. Abdon, her daughter Elnora Wright; her grandson, Don Wright; her great-granddaughter, Brenda Wright Houle, and her great-great-granddaughter three-month-old Kristy Ann Houle.

## SPEAKING OF DISABLED PERSONS:

### Toward An Open Road

By Bill Kiser  
Growing up in an age of limited travel, I remember that to go 50 miles meant a long and grueling trip. Probably the journey would have been by primitive automobile on tooth-shaking bumpy roads, or by slow and dirty steam-powered trains.

My uncle and aunt, who made an 800-mile trip to New Orleans each year, were like astronauts in my boyhood imagination. When I was eight, Mother and I decided to make this tremendous journey with them.

Remaining the high point of my childhood memories, the trip was my only major excursion until a few years ago. But I have traveled enough to know well the barriers to mobility of physically handicapped people.

Those of us who have multiple handicaps have the greatest difficulty in traveling, and it is often impossible to find one mode of travel that does not present a problem. For example, car travel presents no legal or commercial restrictions, but it is fatiguing. We must shop for accessible rest stops, hotels and motel. We cannot strike out on the open road without making preliminary plans and reservations.

Public transportation isn't designed with us in mind. Physical and attitudinal barriers often keep us away. As a little boy, I never thought anything of the high steps on buses and trains. Mother and Daddy carried me in their arms. As an adult in a wheelchair, I can hope a driver will be kind enough to lift me on or off the bus, but I cannot depend on such service.

Making public transportation accessible will be a slow and difficult process. The technology is available, but the money and public commitment often are not. Full implementation of the mass transportation act will give handicapped people more opportunities to travel. One system, Amtrak, the Government subsidized railroad corporation, is now making its trains and stations accessible to handicapped travelers.

Today frequent air travel is a fact of life for many Americans. It is also the most comfortable and convenient way for physically disabled people to go long distances. Most airlines have served us well, but as more physically disabled people have traveled by air, the airlines have imposed more restrictions. Disabled individuals and concerned organizations are working to change air regulations which bar flight to handicapped people.

Transportation is only the beginning of the travel problem for disabled people. Accommodations also can be hard to find. No matter how luxurious a hotel room, it doesn't do me much good if my wheelchair can't fit through the bathroom door. Ten or fifteen years ago, few hotels even considered the needs of handicapped people. Today, a number of large chains such as Travelodge, Howard Johnson, Quality Inns, Ramada Inns, and Holiday Inns of America provide a certain number of accessible rooms.

For the handicapped person who travels by car, lack of rest stops can be a deterrent to mobility.

## VFW Auxiliary Presents Flags to Schools, Girl Scouts

A regular business session of the Ladies Auxiliary Veterans of Foreign Wars to Chelsea Post 4078 was held Monday, Feb. 8. Eleven members were in attendance.

Americanism chairman Eulahlee Packard reported on presentation of American flags to two Girl Scout troops on Jan. 27. Nine flags were presented to classrooms at North Elementary school, as well as a book on History of American flags for the school library. She also presented one to the South school library and one to McKune Memorial Library.

Feb. 8, at Hanover-Horton Post, of Democracy awards in the local contest. A citation was given to the Chelsea auxiliary from the state for participating. She also reported on Girl Scout Troop 719, which the Auxiliary sponsors.

The following auxiliary members attended the sixth district meeting Feb. 8, at Hanover Horton Post, Geraldine Klink, Mary Kniss, Eulahlee Packard, Joan Barnes, Betty Smith and Lucy Platt. Detailed reports were given by the delegates attending. Nine members of the local post also attended the meeting. Everyone is urged to write the Governor and our representatives to have the wording changed in the bill of the "Veterans Trust Fund," which is now in committee to read "shall" instead of "may" as it is now written.

Ten new By-laws and rituals were ordered for each office in the auxiliary. Plans to assist the post with a party at the Ann Arbor VA Hospital were voted on. The date is yet to be decided.

Mary Kniss, Betty Smith and Gertrude O'Dell were named on the bingo committee to work with the post. The next regular meeting will be March 8, in the VFW Hall.

The VA earmarked a record \$403.9 million for construction of new health facilities or expansion of existing health care units in 1975. During 1975 the VA recorded a seven percent increase in the number of veterans receiving medical treatment—a total of 1,220,000 persons. More than 91 percent of the patients were treated in VA hospitals and on an average day 173,630 veterans were cared for. Outpatient care increased by 19 percent to a total of 14,630,000 visits to VA staff or private doctors on a fee basis.

Telephone Your Club News To 475-1371.



**50th ANNIVERSARY:** Mr. and Mrs. Tony Push of 11175 Chelsea-Dexter Rd. will be honored Saturday, Feb. 14, on the occasion of their 50th wedding anniversary at the UAW Hall here. The couple was married Jan. 2, 1926, in Swampton, Ky. The anniversary celebration will be hosted by the couple's children, Mr. and Mrs. Silas G. Hopkins and Mr. and Mrs. Ernest Push of Chelsea, Mr. and Mrs. Paul Bayer of Manchester, and Mr. and Mrs. Robert Push of Dexter. Both Mr. and Mrs. Push are retired from Rockwell International. The couple have 10 grandchildren and two great-grandchildren.



**TROOP 145—**  
Troop 145 met on Feb. 4. We made waste baskets out of egg cartons. Shauna Williams brought treats. We made plans to go bowling soon.  
Paula Colombo, scribe.

**TROOP 84—**  
Jan. 28, Brownie Troop 84 went bowling at Chelsea Lanes. It was a new experience for many of the girls. One, first-timer, Karen Moore, had the high game of 67; other highs were Alison Hepburn, 61; and Christine Hegadorn, 60. Feb. 4, Karen Libeck and Cathy Roy from Cadette Troop No. 98 came to our meeting and showed us how to make yarn animals.  
Laura Anderson, scribe

## TIPS for your TOPS

By Toddy & Fran

With the Michigan Hair Dressers' and Cosmetology Assoc. convention on Feb. 8-9 in Northland behind us this week we find seven very enthusiastic hair dressers from Magic Mirror with a brand new release. It's exciting and truly a look of "76". There are two short cuts with many looks within each style, and two longer styles truly representing our Bicentennial year.

Come in and see some of our stylists wearing the new look, and ask us about the newest type of hair coloring called Carollight. It's the newest thing in hair coloring. It may be a touch of Spring for this cold Winter weather for you to have a New Look.

We learned new styles for men, and also enjoyed a pleasant evening viewing the styles of 200 years from 1776-1976 presented by our own Michigan Hair Fashion Committee.

Call for an appointment. 665-0816 or 665-5284

Come see us soon at

**MAGIC MIRROR BEAUTY SALON**  
6585 Jackson Rd.

## CARPET REBIRTH

Give your carpet a new lease on life by cleaning it regularly.

## JET SPRAY CARPET CLEANING

Use Your BankAmericard Phone 761-3025 or 475-1509 Ask for John Lixey.



Are you gambling with your family's security?

Suppose you were sued for \$500,000... and lost! Would you be able to stay out of bankruptcy? And what would happen to your family security? Suits involving hundreds of thousands of dollars are all too frequently started against businessmen and professionals simply because they are well-known as affluent and successful people! Here's an economical way to avoid such a risk! Our Executive Liability Insurance provides up to \$5,000,000 of protection for you and your family. Call us now. We can probably put all your liability insurance together and even save you some money.

it's better **altogether**

**A. D. MAYER AGENCY, INC.**

BOB BARLOW, AGENT  
PHONE 475-2030  
115 PARK ST., CHELSEA

**Auto-Owners Insurance**  
LifeHomeCarBusiness

## ARTIQUE STYLE



by **WYLER**  
Raised coin-struck  
**POCKET WATCH**

Vests are in style! Pocket watches are fun... worn with or without chains. But his Signal/Wyler is more than fun/fashion. It's a superb timekeeper you can rely on and show off.

Spring-open cover reveals a smart Victorian face with classic arabic numerals and a second dial. Shown: Fishing scene, also available hunting scene, both deeply die-struck, in white or yellow. True beauty for only \$65.00

**WINANS JEWELRY**

## STYLE SHOP

207 1/2 S. MAIN  
475-8400

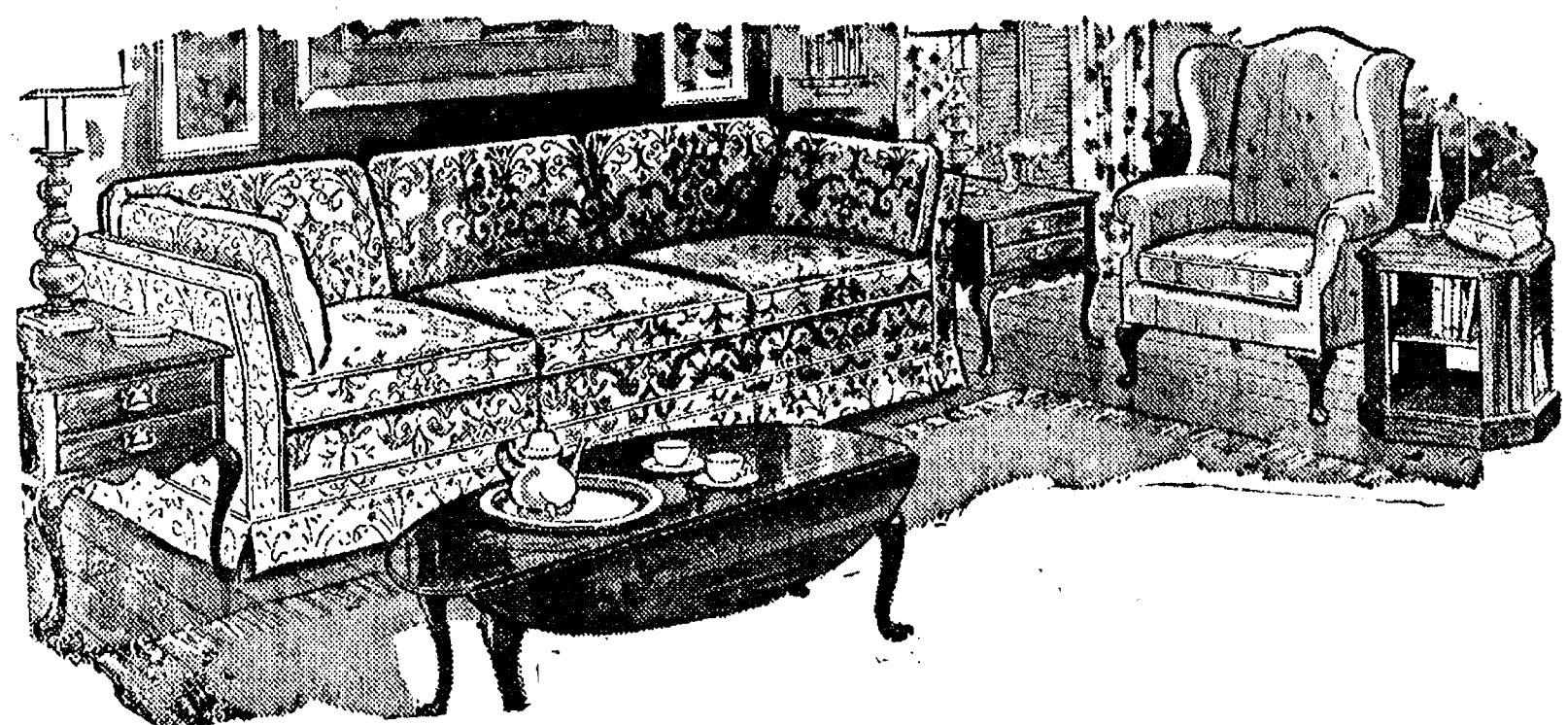
Tues., Fri., Sat. 8 to 5

Wed., Thurs. 8 to 8

JUDY, WANDA  
SHIRLEY and ROSEMARY  
Feb. Permanent Special

## STORE-WIDE SALE

SALE ENDS SATURDAY, FEB. 14



**ALL STOCK FURNISHINGS REDUCED**

15% to 50%

SPECIAL ORDERS LESS 10%

## SAVE ON CARPET & RUGS

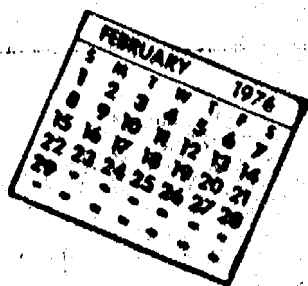
**Merkel**

**HOME FURNISHINGS**

Phone Chelsea 475-8621



## Community Calendar



Rogers Corners Study Group Tuesday, Feb. 17 at 6:30 p.m., at Barbara Schable's. Pot-luck. Bring heritage dish to pass.

Rogers Corners Farm Bureau, Friday, Feb. 13, home of Mr. and Mrs. Elwin Meyer, 8:30 p.m.

Welcome Wagon International Bridal Shower, Tuesday, Feb. 17, 7:30 p.m., Campus Inn, Ann Arbor. For engaged women. You may bring your fiancé and either your mother or future mother-in-law. For reservations call Sherri Downs, 761-6469. Fashion show, gifts, refreshments.

Lyndon Township Planning Commission meets the second Thursday of the month at the Town Hall at 8 p.m.

Huron Valley Mothers of Twins Monday, Feb. 16, 7:30 p.m., at Michigan Consolidated Gas Co., 211 E. Huron St., Ann Arbor. Mothers and guests welcome. Advise Jan Miller, 622-3794 if attending.

Tuesday Nite Singles at the Briarwood Community Room, State St. and I-94 exit, near Sears, Tuesday, Feb. 17, 8 p.m. to midnight. Refreshments. All singles 25 and over invited.

Washtenaw County Medical Care Auxiliary Board meeting Wednesday, Feb. 18 9:30 a.m. at the Sunnyview Convalescent Home, 1045 Ware Court, Ypsilanti.

Saturday Night Singles, Valentine Dance, Feb. 14 at the Ann Arbor Y, 350 S. Fifth Ave. 9 p.m. to midnight. All singles 25 and over are invited. Married couples that met at the Singles Club invited to attend. For information phone 663-6068.

Every Thursday, 7:30 p.m. Lecture-Discussion on Alcoholism at the Chelsea Community Hospital. Lectures are co-sponsored by the hospital's Alcoholism Therapy Program and the Washtenaw Council on Alcoholism. For further information, call Carl Asher, 475-1311 or Donna Caswell, 971-7900. Everyone welcome.

Chelsea Home Meal Service delivers one hot meal a day to elderly and disabled living in the Chelsea area. For information call 475-3014 or 475-2923.

Lamaze Association of Ann Arbor is now holding classes at the Chelsea Community Hospital. If interested, call 761-4402, or 475-9316.

Inquiries regarding the Chelsea blood bank may be directed to Harold Jones in the event that Mrs. Dudley Holmes is unavailable, or to Robert Moyer, American Red Cross in Ann Arbor, 971-5300.

Sylvan Township Board meeting the first Tuesday of the month, at 7 p.m., at Sylvan Township Hall.

Parent-Teachers Organization in the North school cafeteria Thursday, Feb. 12, 7:30 p.m.

Chelsea Jaycee Auxiliary Hypertension Screening Clinic, Feb. 23, 9 a.m. to 1 p.m. Longworth Plating building. Free to all area residents of any age.

Washtenaw County Disabled American Veterans, Chapter No. 13, Feb. 18 at 7:30 p.m., American Legion Home, 1035 S. Main St., Ann Arbor. Election, nominations and installation of officers for the coming year.

McKune Memorial Library Children's Story hour from 9:30 a.m. to 10:30 a.m. every Wednesday for children three and four years old.

Pap tests are free for all area women, Tuesday mornings, at St. Joseph Mercy Hospital, Ann Arbor. Call American Cancer Society office, 668-8857 for appointment.

Chelsea Co-op Nursery applications for 1976-77 classes are now being taken. For information, call Leslie Bowers, 475-1401. xadv121

OES card party at Masonic Temple, Feb. 14, 8 p.m. Public invited.

Houseplant sale—Assortment of plants, pots, soil and hangers for every valentine in your life on Feb. 13 from 1 p.m. to 8 p.m.; Saturday, Feb. 14, 10 a.m. to 4 p.m., St. Andrew's Church Hall on Dexter-Ann Arbor Rd., by the Water Tower. Sponsored by Dexter Co-Op Nursery. xadv35

Past Matrons Club of Chapter 108 OES potluck lunch and meeting Thursday, Feb. 13, 12:30 p.m. at the home of Mrs. Leah Smith.

Chelsea Area Historical Society is taking 1976 annual memberships. Applications for membership may be picked up at McKune Memorial Library, or write Box 334, Chelsea 48118, or telephone 475-8968 for more information.

Chelsea Band Boosters in the high school band room Thursday, Feb. 12 at 8 p.m.

Chelsea Jaycees first Tuesday of every month. Board meeting, fourth Tuesday of every month at Chelsea Lanes. Meetings begin at 7:30 p.m., guests are welcome.

American Legion and Auxiliary hospital equipment available by calling Guy Freysinger at 475-1961.

Lyndon Township Board meets the third Thursday of the month at the Town Hall at 7 p.m.

AA and Al-Anon meeting, Monday evenings at Chelsea Hospital, 8:30 p.m. Closed meetings.

Lima Township Board meets the first Monday of every month at the Lima Township Hall, 11452 Jackson Rd., at 8 p.m.

## DEATHS

### Charles W. Dorr

Dies Sunday at Hospital Following Long Illness

Charles W. Dorr, 60, of 114 W. North St., died at St. Joseph Mercy Hospital, Ann Arbor, Sunday, Feb. 8 after a lengthy illness.

Mr. Dorr was born in Sharon township on June 28, 1915, a son of Carl and Mary Buss Dorr. He was married to Thelma Jones on April 21, 1935. She survives. Other survivors include three sons, Duane, Howard and Steven Dorr and a daughter, Mrs. Robert (Catherine) Draper, all of Chelsea, six grandchildren, two sisters, Mrs. Clarence (Mildred) Smith and Mrs. John (Dorothy) Rhines, both of Jackson, several nieces and nephews.

Mr. Dorr had been employed by Chelsea Lumber Co. for the past 15 years.

Funeral services will be held at 1 p.m. Thursday (today) Feb. 12 at the Burghardt Funeral Home with the Rev. Marvin H. McCallum officiating. Burial will follow in Oak Grove Cemetery, Manchester.

### Dr. John C. Brier

Retired U-M Professor Dies at Area Nursing Home

Dr. John C. Brier of 13836 Rustic Dr., Gregory, died at the Huron View Lodge in Ann Arbor Feb. 10 at the age of 86.

He was born Feb. 27, 1889 in Hutterfield, England, the son of Mr. and Mrs. Ward Brier. He married Grace E. Siebert on Sept. 12, 1913 in the chapel of Kenyon College at Gambier, O. She died June 1, 1969.

Dr. Brier attended the University of Michigan from 1903 to 1912 and began teaching there in 1916. He was a Professor of Chemical Engineering at the University, retiring in 1959. During his teaching career he received his doctorate in engineering from the U. of M. He was also a consultant for several large corporations. During the war years, from 1942 to 1945, he served as colonel in the U. S. Army. He was the commanding officer of the Southwestern Proving Grounds at Hope, Ark.

He is survived by one son, Phillip W. Brier of Gregory, a brother, Horace Brier of California, and a sister, Mrs. Kathleen Bamforth of Detroit, and four grandchildren. A daughter, Eleanor J. Brier, died Aug. 28, 1940.

Cremation has taken place. There will be no memorial service. Arrangements were by Staffan Funeral Home.

### JV Cagers Win Over South Lyon

Chelsea's junior varsity cagers defeated South Lyon Tuesday evening, 50-42. According to their coach, Paul Terpstra, the key to the Bulldogs' victory was strong playing in the first and third quarters of the game. The JV Bulldogs managed to outscore the Lions 12-5 for the first quarter of play and 16-8 in the third quarter.

High scorers for the 'dogs were Mark Feeney and Chris Smyth, each who put in 10 points. Brian Lewis had eight points and Jeff Rudd and Dave Schrotenboer dropped in six points each. Other scorers were John Daniels and Joe Ewald with four points and Rod Sweeney with two. Schrotenboer was the high rebounder for the game, snagging 12, while Mark Feeney dragged down seven.

Last Friday, they traveled to Brighton where they were defeated 43-36. The defeat was attributed to poor floor and foul line shooting, according to Terpstra.

In that game Rod Sweeney was the high scorer with 10 points; Dave Schrotenboer had nine, Chris Smyth had seven, Joe Ewald had six and John Daniels had four. Schrotenboer snagged 14 rebounds, Smyth snagged 10 and Mark Feeney dragged down seven.

The team now holds an SEC record of seven and four. They will meet Milan on the opponent's courts Friday.

### Music Festival...

(Continued from page one)

inet quartet of Sandy Welshans, Jerry Herrick, Michael Benedict and Laurie Hastings.

The brass quartet of David Waldyke, cornet; Debra Kopele, cornet; Sue Schaffer, french horn, and David Morris, trombone, received a II rating.

Brad Flanigan on the trumpet, Jeff Boyer, cornet; Keith Stillion, trombone, and Tom Owens, trombone, received a II for their brass quartet.

Linda Hamilton on the flute received a Division II rating for her solo.

The clarinet quartet of Barbara Proctor, Beth Wireman, Debbie Connell and Karen Popovich was awarded a III for their performance, as was the clarinet duet of Linda Durgan and Jennice Hoffman.

Seventh grade ensembles and students who received Division I ratings were, flute trio, Donna Finkbeiner, Kathy Honbaum, and Dawn McDowell; woodwind quintet, Nancy Heller, Kris Kvarnberg, Beth Bush, Melani Schneider, and Patty Schuman.

Soloists receiving Division I ratings were Nancy Heller, piano; Keith Schmitke, trombone, and Eric Wiedmayer, trombone.

Division II ratings were received by clarinet quartet, Michele Alexander, Darla Walz, Brian Blough, and Sterling Vorus; clarinet and flute duet, Angie Inglis and Margaret Stirling.

Soloists receiving Division II ratings were Paul Anderson, cornet; Margaret Stirling, flute, and Michele Umstead, cornet.

Division II ratings were received by clarinet quartet Cindy Snyder, Angie Inglis, Elaine Meyer and Kris Kvarnberg; flute duet, Theresa Merkel and Donna Finkbeiner, and flute soloist Kathy Honbaum.

Young children who pay more attention to movement than to sound, and who give undue concentration to a speaker's face may be suffering from hearing losses and should have a thorough hearing test according to hearing specialists.

### FARLEY CONSTRUCTION

522 HOWARD RD.

ADDITIONS • REMODELING  
CONCRETE WORK  
REPAIRS

475-8265 or 475-7643



MILLION DOLLAR AWARD: Mr. and Mrs. Sam Johnson (left) and Mr. and Mrs. George E. Elkins (right) operators of the Gambles store here, were presented with the One Million Dollar Award from Wayne E. Waldera (center), president of the Gamble

Stores Division of Gambles at the Marriott Hotel in New Orleans, La. Gambles Stores Division, owners and managers were in New Orleans late in January for the annual January buying market and convention in the Rivergate Convention Center.

## Gambles Dealers Honored for Sales Record

Mr. and Mrs. George E. Elkins and Mr. and Mrs. Sam Johnson, owners and operators of the Gambles store here have been presented with an engraved plaque and a gold pen and pencil set in recognition of having become members of Gambles' One Million Dollar Club.

Announcing the award was Wayne E. Waldera, president of the Gambles Stores Division of Gambles, the Minneapolis-based merchandising company. The gifts were presented at the Marriott Hotel in New Orleans, La. where the Gambles Stores Division has now completed its annual January buying market and convention in the Rivergate Convention Center

which was attended by more than 800 Gambles dealers from 24 states.

"We are pleased to present this award," Waldera said, "as it signifies that these dealers have joined a select and distinguished group of merchants, all highly qualified in the field of merchandising and consumer service and all of whom have distributed Gambles merchandise having a total retail value of more than \$1 million."

"We know that friends join us in extending hearty congratulations on this noteworthy occasion. The fact that this Gambles dealer has qualified for the Three Million Dollar Club is evidence of the consumer confidence and loyalty that has been achieved," Waldera concluded.

### Wrestlers...

(Continued from page one)

Young, at 101 pounds, wrestled well in gaining a third-place medal, and Rick Beeman, at 135 pounds, came close to gaining a third place, finally settling for fourth.

Chelsea's only other points were earned by Bruce Bennett who scored a pin victory in the consolation.

Schoenberg gained his title by defeating South Lyon 6-2, Dexter 6-4, and Saline in the finals, 5-4.

Nick Keiser's title came about with an 8-5 win over Brighton, a 10-3 win over Milan, and a 2-0 win over Saline in the finals.

At 158 pounds Tim Reed reached the finals by pinning Novi and Milan wrestlers. In the final match, Reed went against the defending league champ, Randy Centoria of South Lyon. He earned a second period reversal and made it stand, winning 2-1 in an "exciting" match.

Dennis Bauer, wrestling at 188 pounds, scored a pin over South Lyon before defeating Saline in the finals.

Coach Bareis remarked that his team put on a fine performance. "We knew we would have to have good performances to gain second place and the team responded to the challenge."

Chelsea will travel to Willow Run this Saturday for district action. Wrestling will begin at 1 p.m.

### JAMES SMITH

### New Controller Named for Dana's Chelsea Plant

James Smith has recently been appointed as controller of Chelsea's Dana plant, it was announced by Ron Bollet, plant manager. Smith replaces Ralph Bash who is now with the Spicer Axle Division in Edgerton, Wis.

Smith is a 1970 graduate of the University of Toledo, where he holds a BBA degree and majored in accounting and finance. He is a certified public accountant and was employed with Arthur Young and Co. in Toledo prior to coming to Dana.

His experience in Dana Corp. has been with the internal audit staff and special assignment to the plant in Marion, Ind. He was manager of corporate accounting at Dana's home office in Toledo prior to his transfer to Chelsea.

Smith and his wife, Diane, who is a registered nurse, have moved to Chelsea and reside in Lanewood addition.

The only woman who gladly listens to both sides of an argument is the lady next door.

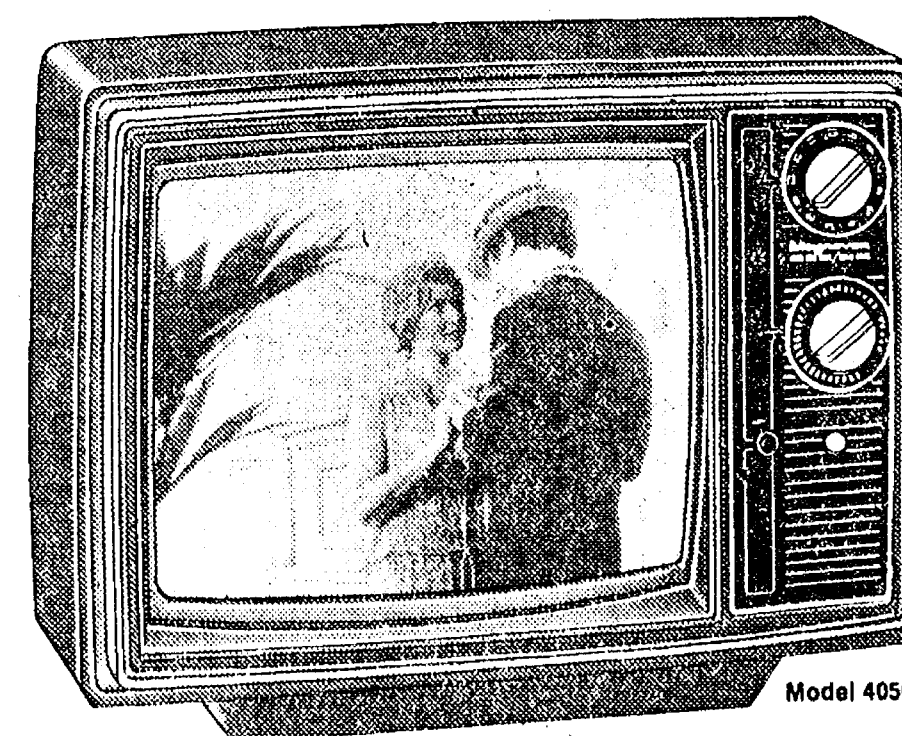
GENUINE  
HAND-SPLIT FIELDSTONE  
COSTS ABOUT \$12 PER SQ. FT.  
- IN PLACE

CHELSEA LUMBER  
Stocks  
DAYCO-STONE  
at \$3.00 per sq. ft.  
(including adhesive)

They're dramatically authentic  
& will go on any sound surface.

A WALL (OR PART-WALL) OF  
DAYCO-STONE WOULD LEND  
A VERY SPECIAL ATMOSPHERE  
TO SOME ROOM IN YOUR HOME

DO - IT - YOURSELF!



SAVE \$40

13" Solid-State Color Portable with AFT

Enjoy your own private world of viewing enjoyment with this perfect personal portable. It offers the convenience of automatic fine tuning (station signals are "locked-in" for an accurately tuned picture on any channel—UHF or VHF)...and its Precision In-Line Tube System will bring you your favorite program with exceptionally bright, sharp pictures. As are all Magnavox solid-state Color TVs, it has been extra tested for extra reliability. And, your budget will love this special low, low price!

\$329<sup>95</sup>

Magnavox

Quality in every detail

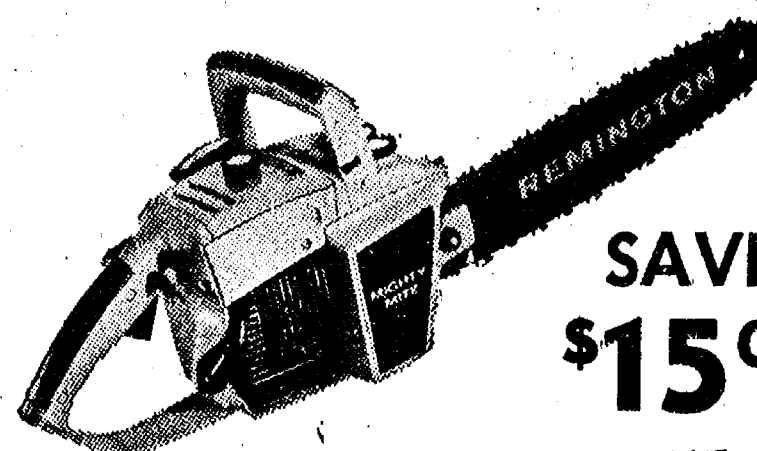
HEYDLAUFF'S

113 N. Main St. Chelsea

Phone 475-1221

GO **GAMBLES**

REMINGTON  
CHAIN SAW SALE



SAVE  
\$15<sup>00</sup>

EASY TO HANDLE, FUN TO USE

MIGHTY MAC BANTAM

34 cc engine, 10" cutting bar. \$94<sup>88</sup>  
Reg. \$109.95. NOW

MIGHTY MAC DELUXE

Reg. \$139.95. NOW \$124<sup>95</sup>

PLUS FREE CARRYING CASE—\$19.95 Value

SL9 DELUXE

Automatic oiling, roller nose, 46 cc engine, 30" cutting capacity. Reg. \$199.95. NOW \$184<sup>95</sup>

SHOP NOW and SAVE!





**TWENTY-FIVE YEAR BENEFIT:** Employees who have logged 25 years or more at Rockwell International here were honored late in December with a banquet at Weber's in Ann Arbor. The 25-year banquet is an annual event. Pictured seated from left are William Aldrich who has been with the company for 25 years; Mildred Tucet, 30 years; Margaret Kuhl, 25 years; Katherine Beach, 25 years; and Willard Guest, 30 years. Standing from left Noah Risner, 25 years; Donald Baldwin, plant manager, and David Myers, 25 years. Not present were Hollis Holloway and Rhebena Bailey.

**Metzger's**  
**German**  
**RESTAURANT**  
IMPORTED & DOMESTIC BEERS & WINES  
COCKTAILS  
**NOW OPEN**  
**SUNDAYS**  
11:30 a.m. 'til 8 p.m.  
For more information call 668-8987  
203 E. Washington, Ann Arbor  
Between S. 4th & 5th Aves.

### Chelsea Day in Florida Scheduled Sunday, Feb. 29

Sun-tanned Chelseaites will have an opportunity to compare their color Sunday, Feb. 29 at the Shockley Hill Clubhouse, when once again, "Chelsea Day" is held in Florida.

For those lucky enough to be sitting in the sun, the event will kick-off with a 12:30 p.m. pot-luck to which all Chelsea "folks" in Florida are invited. And for those of you who wish to jet down for the week-end, you too are cordially welcome.

According to Mrs. Donovan Sweeney who wrote to tell us of the event, directions to the clubhouse are as follows, "north of Unatilla on highway 19, 6 miles and one mile east to the Shockley Hill turn off of 19 Alexander Spring Rd.

Hope y'all get there.

### Personal Notes

Dennis Landwehr, son of Mr. and Mrs. Duane Landwehr of 18000 Cavanaugh Lake Rd., is at home after spending six months in Idaho Falls, Id. Dennis plans to move to Norfolk, Va., in a few weeks.

## Girl Scouts Taking Orders for Cookies

The annual Girl Scout cookie sale gives Chelsea Girl Scouts an opportunity to earn money for their troop activities; to help girls participate in special Girl Scout projects, to give direct service to girls and to purchase equipment and property in their behalf.

Support of this sale contributes 20 cents per item to the local troop and 40 cents per item to the Girl Scout Council. The council profit adds to campsites, equipment and camp buildings available to every Girl Scout, their sister scouts and future scouts' opportunities for camping.

The 1976 advance orders are being taken now through Feb. 15 by Chelsea's seven troops. Sales must meet last year's total to achieve the cookie sale profit of last year. Mrs. Jerry Satterthwaite explained. Even though the cost of the cookies has gone up to \$1.25 an item, the number of items sold must meet last year's to keep troop profits the same.

Five traditional Girl Scout cookies will again be sold, including Lemon Cremes (vanilla cookies with lemon creme centers), Oxford

Cremes (an assortment of vanilla and chocolate cookies with vanilla creme centers), Scot-Teas (sugar-topped shortbread, Mint (chocolate wafers with mint coating), and Savannahs (peanut butter cookies and filling).

Girl Scouts are also offering Sesame Crisp Crackers (a thin cracker sprinkled with sesame seeds) and an authentic English Breakfast Tea (a blend of teas from the Keemun district of China, imported by John Wagner & Sons of Philadelphia).

Mrs. Satterthwaite, cookie chairman for the Chelsea area, is being assisted this year by Mrs. Jeanette Sweet for Troop 58, Mrs. Jeanette Riemenschneider for Troops 82 and 442, Mrs. Betty Herrst with Troop 98, Mrs. Barb Frame is helping Troop 719, Mrs. Lois Salyer and Mrs. Jane Finkbeiner are working with Troop 689 and Mrs. Barb Vanderford is supervising Senior Troop 47.

Cookies will be delivered in the Chelsea area March 25 to April 9. Residents who have not placed an advance order may do so by calling any of the troop chairmen or Mrs. Satterthwaite before Feb. 18.

## Biddy Basketball Play Continues on Saturday

In Biddy basketball games played Saturday, Feb. 7 among the WBA league the Bullets knocked over the Kings, 8-6, while the Hawks rammed the Rockets, 22-8. The Lakers sunk the Suns, 14-8, and the Knicks clobbered the Capitols, 12-10.

In the ABA the Sails spun around the Spurs, 26-12, the Colonels defeated the Pacers, 18-8, the Braves walloped the Warriors, 18-14, and the Squires hung the Nets, 18-6.

In the NBA the Bucks bypassed the Bulls, but just barely, 10-9; the Jazz jumped over the Celtics, 16-12, and the Pistons dribbled by the Cavaliers, 21-19.

This Saturday, Feb. 14, the Bullets will play the Rockets at 10:40 a.m. at South school. Also playing at South school at 11:20 a.m. will be the Kings and the Hawks.

At the high school, the Pacers will meet the Nets and the Squires will match up with the Warriors at 10 a.m. At 10:40 a.m. the Suns will play the Knicks and the Braves will meet the Spurs. At 11:20 a.m. the Kings will play the Hawks and the Lakers will play the Capitols.

NBA teams will play at Beach Middle school. At 10 a.m. the Bulls will match up with the Pistons, followed by a 10:40 a.m. game with the Cavaliers going against the Celtics. The Bucks will play the Jazz at 11:20 a.m.

## VFW Post Takes District Rally Honors

The VFW Sixth District Rally was held last Sunday, Feb. 8 at the Hanover-Horton Post.

The Chelsea Post was represented by Commander Gary Kent, Senior Vice-Commander Byron Smith, Junior Vice-Commander James Barnes, Fremont Boyer, Bill Pierce, Frank White, Tom Collinsworth, Mac Packard and Ken Platt who is the district's membership chairman.

The local post, one of 28 in this district, walked away with the most of the top honors of the day. They sold the most beef tickets and received 25 pounds of beef for their efforts. Unfortunately, no one from Chelsea won beef as a result of buying a beef ticket. The post also had the most members in attendance, percentage-wise and won a trophy for the largest membership with 139 percent as of Jan. 31. They were also awarded a \$25 check.

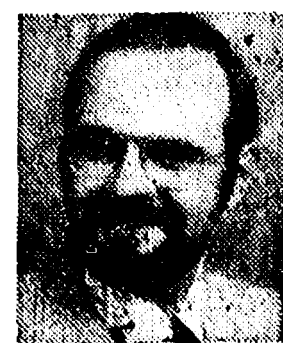
Main speaker for this meeting was past commander of Michigan and editor of the Michigan Overseas newspaper known as the MOV, Pat Foley. He spoke on the Veterans Trust Fund liquidation in Lansing. Veterans, families and friends were urged to contact the Governor and legislators with calls, letters or telegrams before the Trust Fund is liquidated.

### Girls Volleyball Schedule

Feb. 13—Milan .....home 4:00  
Feb. 16—Manchester .....away 7:00  
Feb. 20—Dexter .....away 4:00  
Feb. 27—Saline .....away 4:00  
Feb. 28—League Meet, Novi, 10:00  
Mar. 4—Stockbridge ..home 4:00  
Mar. 13—Regional  
Mar. 20—State Finals.

## You and Your FARM

... one of the reasons we're in business. The first with a Farm-owners policy, the first with Agropol, the first with an environmental protection endorsement. All at a fair price. Check the facts



DAVE ROWE

107 1/2 S. Main  
Chelsea, Mich.  
Ph. 475-8065

FARM BUREAU  
INSURANCE  
GROUP



**DIVISION I RATINGS** were given to a number of Chelsea High school musicians for their performances at the High School Solo and Ensemble Festival held Saturday, Jan. 31 at Henry Ford Community College in Dearborn. Among those receiving Division I ratings are, seated, Linda Jennings for

her performance on the flute, and Bob Swanberg, cornet. Standing, from left, Keith Johnson for his performance in a trombone trio, Doug Foreman for his individual performance on the piano and Bill Smith for his performance on the clarinet.

## High School Band Students Earn Honors at District Festival

Chelsea High school bands attended the High School Solo and Ensemble Festival at Henry Ford Community College in Dearborn Saturday, Jan. 31, coming away with a number of honors.

Receiving Division I ratings for solos were Linda Jennings and Holly Hoffmeyer on the flute, Bill Smith on the clarinet, Bob Swanberg on the cornet, Kim Brown on the french horn, Jim Wiedmayer on the trombone, and Laurie Klink and Doug Foreman on the piano.

Chelsea High school bands attended the High School Solo and Ensemble Festival at Henry Ford Community College in Dearborn Saturday, Jan. 31, coming away with a number of honors. Receiving Division I ratings for solos were Linda Jennings and Holly Hoffmeyer on the flute, Bill Smith on the clarinet, Bob Swanberg on the cornet, Kim Brown on the french horn, Jim Wiedmayer on the trombone, and Laurie Klink and Doug Foreman on the piano. First Division ensemble ratings were awarded to the trombone trio of Keith Johnson, Randy Harris and Jim Wiedmayer. The flute duet of Sue Dowhal and Dawn Klobuchar received a Division II rating for their performance. Kathy Slater, Carolyn Schardein and Anne Schaible came away with a Division II rating for their clarinet trio. The french horn duet of Mark Shippey and Kathy Burns was given a Division II rating.

## ST. LOUIS SCHOOL FOR EXCEPTIONAL BOYS ST. PATRICK'S DANCE

MARCH 13, 1976

8:00 p.m. 'til 1:00 a.m.

ST. LOUIS SCHOOL

16195 Old US-12 West, Chelsea, Mich.

GENE JONES ORCHESTRA

Free Refreshments \$10.00  
B.Y.O.B. (Set-Ups Furnished) Per Person

RETARDED CHILDREN CAN BE HELPED

### Co-Op School Children Visit Chelsea Post Office

Tuesday and Wednesday some 60 North Lake Co-Op Nursery school children and their mothers visited the Chelsea Post Office. Assistant Postmaster Larry Williams gave them a very interesting and helpful tour.

The day was topped off by each child mailing a valentine to his family. After purchasing a stamp the processing of the valentine was followed: from cancelling, sorting, and preparing for the mailman to the mailman resorting and leaving for his route. Included in the visit was the preparation of large packages and parcels.

When the valentines arrive at home the visit to Chelsea Post Office will be complete.

Telephone Your Club News To 475-1371.

## VALENTINE Gift Sale

Come in and See Our

## New Line of GIFT JEWELRY

## NEW SPRING FASHIONS HAVE ARRIVED

From Bobby Brooks, Pandora, Red Eye, Russ, Donovan, Galvani, Aileen and other famous names.

NEW SELECTION

LEVI BELLS

Complete New Line of  
**HEALTH-TEX**  
CHILDREN'S WEAR

COUPON  
**\$5.00 OFF**

on  
**GARHART COVERALLS**  
(Insulated)

(Coupon Good Only Sat., Feb. 14)

## DANCER'S

Chelsea's Friendly Dept. Store

## RICK'S MARKET

20490 M-52 "The Store with the Spartan on the Door" Phone 475-2898

12-OZ. CANS  
**COKE** . . . . . 8 pac **\$1.29**

16-OZ. NO-RETURN BOTTLES  
**7-UP** . . . . . 8 pac **\$1.25**

HANS ALL-MEAT  
**BOLOGNA** . . . . . Lb. **99¢**

HANS ALL-MEAT SKINLESS  
**WIENERS** . . . . . Lb. **99¢**

HAMILTON  
**EXTRA LARGE EGGS** . . . . . Doz. **83¢**

ECKRICH  
**SMORGAS-PAC** . . . . . 1-Lb. **\$1.39**  
Pkg.

## SATURDAY BAKERY SPECIAL FILLED BISMARCKS

Variety of Fillings **\$1.59** doz.

(QUANTITY RIGHTS RESERVED)



Ads  
Taken  
till 1 p.m.  
Tuesday

# Advertise the Action Way! The Want Ad Way!

Just  
Phone  
475-1371

## WANT ADS

**The Chelsea Standard**  
WANT AD RATES  
PAID IN ADVANCE—All regular advertisements, 75 cents for 25 words or less, each insertion. Count each figure as a word. For more than 25 words add 3 cents per word for each insertion. "Blind" ads or box number ads, 50¢ extra per insertion.  
CHARGE RATES—Same as cash in advance, with 25 cents bookkeeping charge if not paid before 1 p.m. Tuesday preceding publication. Pay in advance, send cash or stamps and save 25¢.  
DISPLAY WANT ADS—Rate, \$1.40 per column inch, single column, with only 8-point and 14-point light type only. No borders or boldface type. Minimum 1 inch.  
CARDS OF THANKS or MEMORIALS—Single paragraph style, \$1.00 per insertion for 50 words or less; 3 cents per word beyond 50 words.  
COPY DEADLINE—1 p.m. Tuesday week of publication.  
PIANO TUNING, Chelsea and area. Facilities for reconditioning and rebuilding. Used piano sales; reconditioned grands and verticals; E. Ecklund, 426-4429. x504f

**J. R. CARRUTHERS**  
LICENSED  
RESIDENTIAL BUILDER  
CUSTOM HOMES  
ADDITIONS/FIREPLACES  
PATIO  
ROOFING/SIDING/REPAIRS  
475-7234  
CHELSEA 80tf

**KLINK EXCAVATING**  
Buildozer - Backhoe  
Road Work - Basements  
Trucking - Crane Work  
Top Soil - Demolition  
Drainfield - Septic Tank  
Trenching, 5" up  
Industrial, Residential, Commercial  
CALL 475-7631 13tf

**STEP UP TO KOZMA CONSTRUCTION**  
And  
Step  
Down  
In  
Price  
LICENSED  
BUILDER  
COMPLETE  
CONSTRUCTION  
SERVICES  
CALL  
LEN KOZMA  
475-7452 29tf

FOR SALE—3-bedroom ranch with 2-car attached garage on 2.22 acres in Chelsea School District. Now under construction. For additional information, call Farley Construction, 475-7643. 32tf

HOT dry cleans new life into any carpet—shag, kitchen, or indoor/outdoor. It's easy. Rent the HOST Machine. Merkel Home Furnishings, Chelsea, 475-8621. x35

## WANT ADS

**PATCHING and PLASTERING**  
Call 475-7489. 88tf

**CLOGGED SEWER**  
**Reynolds Sewer Service**  
We Clean Sewers Without Digging  
Drains Cleaned Electrically  
FREE ESTIMATES  
2-YEAR GUARANTEE  
Phone Ann Arbor NO 2-5277  
"Sewer Cleaning is Our Business—Not a Side Line" 88tf

**BOB'S LOCK & KEY**  
Complete Locksmithing Service  
Commercial, Residential,  
Automotive  
Luggage locks repaired.  
475-9071 -41tf

**GEORGE W. SWEENEY**  
HEATING  
Licensed Contractor  
Furnaces, air conditioning,  
and sheet metal work.  
Phone 475-1867 -20tf

**CUT FOOD COSTS**  
GROW YOUR OWN vegetables and fruit with new Stark Bro's vegetable seeds and famous Stark Bro's dwarf, semi-dwarf, and standard fruit trees.  
Special early order discounts and free strawberry plants or vegetable seeds.  
Elson Bettner  
15700 Cassidy Rd.  
475-9223 32tf

1968 MUSTANG CONVERTIBLE, \$200. Power steering and brakes, economical 289 engine, in good condition. New snow tires. Needs paint job and body work, but good transportation. 475-2745 evenings. x35

## WANT ADS

**HOUSE FOR SALE by owner—4**  
bedroom ranch, family room, 2 baths, full basement, 3 years old. Ph. 475-1781. 14tf

**CHELSEA SCHOOLHOUSE APARTMENTS**  
Applications being taken for Building No. 2 to be open by Jan. 15. Phone R.E.T.S. Enterprises at 781-3025 or 475-1509 for further information. 25tf

**LEONARD REITH**  
Master Plumber  
Licensed Electrician  
Hot Water Heat  
18238 N. Territorial Rd.  
Chelsea, Mich. 48118  
Phone: 475-2044 52tf

**BLACK SWAMP DIRT by the ton**  
or yard, and backhoe work. Drain fields, basements dug. Drive-ways. Ph. 475-1963. -24tf

**PORTAGE LAKE—This pleasant 2-**  
bedroom home has fireplace, 2-car garage. Convenient lake access. \$34,900.  
**HALF MOON LAKE—Large con-**  
temporary home, 3 bedrooms, 2 fireplaces. Exposed lower level has room for 2 more bedrooms. 3rd bath and family room. \$50's.  
**LUXURY HOME—On 26 secluded**  
acres in Chelsea Schools. Contemporary styling features huge open living space. Master bedroom suite with fireplace. Wrap-around deck.  
\$39,900 — Buys this comfortable home on over 1 acre. Spacious kitchen, study, 3 bedrooms (2 are extra large). Basement and garage. Chelsea School District.  
**WOODED COUNTRY ROAD—Quad**  
level with 3 bedrooms, 2 full baths. Fireplace in large family room basement. \$50's.  
**2 1/2 ACRES—Paved road, Chelsea**  
Schools. \$10,000.  
**10 ACRES—With 5-stall barn.**  
**6 ACRES—Wooded, stream, Chelsea**  
Schools.

**1 ACRE—Large family home with**  
4 bedrooms, 2 1/2 baths, family room with fireplace. Near lake, golf. Chelsea schools. \$67,000.  
**VACANT LAND**  
**2 1/2 ACRES—Paved road, Chelsea**  
Schools. \$10,000.  
**10 ACRES—With 5-stall barn.**  
**6 ACRES—Wooded, stream, Chelsea**  
Schools.

**ROBERT H. THORNTON**  
J.R., P.C.  
REALTOR  
CHELSEA 475-8628  
Dolly Alber 475-2801  
Toby Peterson 475-2718  
Paul Frisinger 475-2621  
Herman Koehn 475-2613  
Max Renner 475-7559  
Mary Ann Rickman 475-1432 x35tf

**HAY FOR SALE—\$1.25 per bale.**  
Ph. 475-2403. x36

**YES**  
WE ARE MAKING  
LONG-TERM FARM  
REAL ESTATE  
LOANS  
SEE US  
Federal  
LAND BANK  
Association  
P. O. Box 7006  
Ph. 789-2411 3645 Jackson Rd.  
Ann Arbor, Mich. 48103

## WANT ADS

**VACUUM CLEANERS**  
Authorized Electrolux  
sales and service.  
**James Cox**  
428-8444, or 428-8688  
118 Riverside Dr., Manchester 48tf

**KNAPP SHOES**  
For Cushion Comfort  
**Robert Robbins**  
475-7282 48tf

FOR RENT — American Legion  
Hall. \$50. Call 475-1824. 40tf

**Complete Body Repair Service**  
Bumping - Painting  
Windshield and Side Glass  
Replacement  
Free Pick-up & Delivery  
Open Monday Until 9  
CONTACT DON KNOLL  
FOR FREE ESTIMATE

**Village Motor Sales, Inc.**  
IMPERIAL - CHRYSLER  
DODGE - PLYMOUTH  
Phone 475-8661  
1185 Manchester Rd., Chelsea  
Hours: 8 a.m. to 6 p.m.  
Tues. thru Fri. Until 9 Monday  
9 a.m. to 1 p.m. Saturday x14tf

**Automotive Rust Proofing Cars and Trucks**  
**Village Motor Sales, Inc.**  
IMPERIAL - CHRYSLER  
DODGE - PLYMOUTH  
Phone 475-8661  
1185 Manchester Rd., Chelsea  
Hours: 8 a.m. to 6 p.m.  
Tues. thru Fri. Until 9 Monday  
9 a.m. to 1 p.m. Saturday 21tf

**COUNTRY LIVING—1 acre, 5 bed-**  
rooms plus study plus TV room, 2 baths, Chelsea schools, \$47,900.  
\$29,900—20 acres with well and septic, 2-bedroom mobile home, Manchester schools.  
**LARGE FAMILY HOME—Ex-**  
cellent condition, 5 bedrooms, study, family room, 2 fireplaces, 3 baths, 2 1/2-car garage, 1.13 acres, blacktop road. Edge of village.  
\$39,900—3-bedroom Cape Cod, immaculate condition, 1 1/2 baths, central location, near elementary school.  
**HILAND LAKE FRONT—2 bed-**  
rooms, 1 1/2 baths, 2-car 2-story garage, \$31,900.  
**160-ACRE FARM with 100-year-old**  
farm house, beautiful scenic area.

**FRISINGER REALTORS**  
Chelsea 475-8681  
Eves:  
Bob Koch 426-4754  
Toby Peterson 475-2718  
Paul Frisinger 475-2621  
Herman Koehn 475-2613  
Max Renner 475-7559  
Mary Ann Rickman 475-1432 x35tf

**Pole Buildings**  
By Huskoe-Bilt  
Farm, urban, commercial. Call Jan Warren for information, 916 W. Michigan Ave., Ypsilanti, Mich. 48197. 482-3934. -x40

**APT. FOR RENT—Three large**  
rooms upstairs, suitable for two only. Partly furnished. Security deposit, no pets. Ph. 475-7488. x39

Headquarters for  
**RED WING WORK SHOES**  
Foster's Men's Wear 40tf

## WANT ADS

**PRICE REDUCED GREATLY—3-**  
bedroom, 1 1/2 bath, fireplace, carpet, attached garage. Many extras, on 1 acre with mature maples. Stockbridge schools. \$30,500. Terms. Ph. (517) 585-3233. 36

**REAL ESTATE**  
**MANCHESTER—Large farm house**  
partially remodeled, new wiring, new heating system, new plumbing, 5 bathrooms, formal dining room. On 5 acres.  
**ALMOST NEW 3-bedroom ranch.**  
Large living room with huge fireplace. Full walk-out basement, 2-car attached garage, nice view overlooking woods, on 5 acres. 1/4 mile to I-94. Chelsea schools.  
**COZY 3-BEDROOM HOME on Big**  
Portage Lake. (Jackson county). Fieldstone fireplace, fully carpeted, enclosed porch overlooking lake. Good beach and fishing. \$20,000.  
**OLD TOWN HALL building and**  
lot. Village of Waterloo. \$5,000.  
**3-BEDROOM HOME on 1/2 acre.**  
Large kitchen with plenty of cupboard space. Full basement, partially finished for family room. 2-car garage, natural gas heat. Gregory schools. \$28,500.  
**1 1/2-ACRE BUILDING SITE with**  
drain field installed. Area of nice homes. Dexter schools. \$12,000.  
**10 ACRES with flowing creek**  
connecting two lakes. Perc guaranteed. Chelsea schools. \$15,000.  
**5 ACRE rolling building site in old**  
apple orchard. Surveyed and pored no problem. Chelsea schools. \$10,000.  
**6 ACRES on Mt. Hope Rd. 437-foot**  
road frontage. Young woods. Grass Lake schools. \$12,000.  
**RENTAL—Year-round lake-front**  
home. 2 bedrooms, fireplace, 2-car attached garage, gas char grill. \$230 per month plus security deposit. Chelsea schools.

**WATERLOO REALTY**  
355 Clear Lake  
**JOANN WARYWODA, BROKER**  
Phone 475-8674  
Evenings:  
Sue Lowe, 475-2377  
Paul Erickson, 475-1748 x35tf

**Waggoner Real Estate**  
426-8387  
**Attention Owners!**  
Have client for executive contemporary home near Dexter.  
Call Now  
Mary Fialkowski, 426-8334. x36

**FOR RENT—Apartment, one bed-**  
room, semi-furnished, in attractive country setting north of Chelsea. No pets. References required. Box JA-29 Chelsea Standard. -x36

**70 VOLKSWAGEN Beetle. Good**  
condition. Ph. 475-8707. x35tf

**FBI Employment Opportunities**  
The FBI is now interviewing for outstanding applicants in Washington, D.C. Positions include:  
GS-2 Clerk, starting at \$6,296.00/year  
GS-3 Typist, starting at \$7,102.00/year  
GS-4 S stenographer, starting at \$7,976.00/year  
Combine an interesting career in the FBI with college opportunities in that area.  
The FBI is an Equal Employment Opportunity Employer.  
For further information and application forms, please contact your local FBI Office at Ann Arbor, telephone 662-2597. P. O. Box 1187, Ann Arbor, Michigan 48106. 35

**Heart Attack Victims**  
Want more information about a U. of M. research program that may prolong your life? Write AMIS, Heart Station, University Hospital, Ann Arbor, MI. 48109. 37

**CARPENTERING REMODELING**  
ALUMINUM SIDING - KITCHENS  
PATIOS - GARAGES  
PHONE 475-7474  
**CHARLES ROMINE**  
Licensed Contractor  
18027 Old US-12  
Chelsea

## WANT ADS

**FOR RENT—Fair Service Center**  
for meetings, parties, wedding receptions, etc. Weekdays or week-ends. Contact John Wellnitz, phone 475-1518. x31tf

**Fireplace Builder**  
Field stone mason, block and brick mason, tuck pointing.  
FREE ESTIMATES  
Call 475-8025 after 3 p.m.  
**Patrick Grammatico** x40tf

**Pickup Caps & Covers**  
For all makes and models. Standard and custom-designed. From \$147.00. Free brochure.  
**PIONEER COACH MANUFACTURING CO.**  
3496 Pontiac Trail  
Ann Arbor, 668-6785 x42tf

**Pierson & Riemenschneider**  
\$21,000—Small home on 1.53 acres with good expansion possibilities, 2 miles east of Chelsea. Chelsea schools.  
\$38,500—2-story frame home in the village, 1.780 sq. ft. 4 bedrooms, dining room, 1 1/2 baths, 2 1/2-car garage and family room.  
**LOW MAINTENANCE all-brick**  
ranch with a private yard, 3 bedrooms, 1 1/2 baths, fireplace, dining room, 2-car attached garage.  
**3-BEDROOM HOME on 2 wooded**  
acres, family room, recreation room, dining room, fireplace, 2 baths, full basement. Chelsea schools.  
**SPACIOUS HOME just 1 mile east**  
of Chelsea, 4-6 bedrooms, 3 baths, family room, workshop, recreation room, wet bar, all this on 1-plus acre with much more to offer.  
**LAKE ACCESS to Horseshoe Lake.**  
Small starter home or cottage, 2 bedrooms, basement, carpet, land contract possible. \$18,500.  
**INCOME PROPERTY—2-family**  
home, 2 bedroom and 1 bedroom apartments. Laundry facilities, garage and close to downtown Chelsea.  
**OFFICE SPACE for rent: Down-**  
town Chelsea, first-floor location. 2 offices and waiting room.

**Pierson & Riemenschneider**  
REALTORS  
Office: 475-9101  
Eves. call:  
Jeanene Riemenschneider 475-1469  
Bob Riemenschneider, 475-1469  
Pat Merkel 475-1824 x35

**WANTED—Chicken house. David**  
Heydlauff. Ph. 475-2422. 36

**FOR SALE—Kay 5-string banjo,**  
like new. \$100 or best offer. Ph. 475-8148. -38

**All Insurance Needs**  
In the convenience of your own home — or mine  
**N. H. Miles, Allstate**  
Call Only 475-8334

**"HEATED GARAGE" SALE**  
Furniture, tools, clothing and misc., Feb. 21-22, 9 a.m. to 6 p.m. 35 453 Railroad St., Chelsea. x36

## WANT ADS

**HOUSE & BARN ROOFING—All**  
types of roof repairs. Hot built up roofing. Aluminum storm windows and doors, aluminum siding and seamless aluminum gutter awnings and porch enclosures. Call Joe Hayes for free estimates, Manchester, 428-8520. x28tf

**CUSTOM SEWING—Draperies,**  
bed spreads, chair covers and ladies apparel. Ph. after 2:30 p.m., 475-8745. 30tf

**Once-A-Year Sale!**  
Tremendous Savings!  
Demos,  
at  
New Cars & Trucks,  
DEMOS  
First come, first served!  
Stock No. 894—75 Dodge Coronet Custom 4-dr. sedan, 360, auto., p.s., p.b., air cond., AM-FM, radials, 2-tone, etc. Was \$5837.80. NOW \$4735

**Used Trucks**  
75 CHEVY 3/4-ton pick-up, 350, auto., p.s., p.b., AM-FM, low mileage \$3995  
74 JEEP 1/2-ton pick-up, 6-cyl., 3-speed, 4-wheel dr., low mileage \$3295  
73 FORD Ranchero Custom 500, 302, auto., p.s., p.b., low mileage \$2495  
73 CHEV 1/2-ton pickup, 307 V-8, auto., step bumper \$1995  
72 DODGE D-200 pick-up, V-8, auto., p.s., p.b., air cond., camper pkg., new tires, high mileage but dependable \$1595  
72 DODGE D-100, 318, auto., p.s., Adventurer Sports pkg. \$1995  
72 DODGE W-300, 4-wheel drive dump, 318, 3-speed \$3395

**NEW '75s**  
Stock No. 795—75 Duster Custom Coupe, 225, auto., p.s., AM radio, Space Duster pkg., etc. Was \$4251.95. NOW \$3745

**Quality Used Cars**  
75 PLYMOUTH Gran Fury Custom 4-dr. hardtop, 318, auto., p.s., p.b., air cond., speed control, AM-FM, rear defogger \$3995  
73 CHARGER SE, 318, auto., p.s., p.b., air cond., AM-FM, radials \$2995  
72 FORD Gran Torino 9-pass. wagon, 302, auto., p.s. \$1595  
72 VW Bus, good condition \$1995  
71 VALIANT 4-dr., 6-cyl., auto., p.s., good transportation \$1095  
71 MERCURY Monterey station wagon, V-8, auto., p.s., p.b. \$995  
70 PLYMOUTH Satellite 4-dr., 318, auto., p.s. \$495  
69 CHRYSLER 300 2-dr. hardtop, V-8, auto., p.s., p.b., air cond. \$695  
68 INTERNATIONAL Travel-All, 6-cyl., 3-speed, engine overhauled \$795  
67 VALIANT 2-dr., 6-cyl., 3-speed \$295

**Village Motor Sales, Inc.**  
IMPERIAL - CHRYSLER  
DODGE - PLYMOUTH  
Phone 475-8661  
1185 Manchester Rd., Chelsea  
Hours: 8 a.m. to 6 p.m.  
Tues. thru Fri. Until 9 Monday  
9 a.m. to 1 p.m. Saturday x35tf

**SPRAGUE**  
Buick-Olds-Opel, Inc. 35tf  
1500 S. Main St., Chelsea  
71 DODGE 1/2-ton pick-up, slant-six, 8-ply tires on rear and overloads; tool chest. Sound mechanically. \$975. Call 475-7643. x35tf

**FINE SELECTION OF USED SNOW TIRES AVAILABLE**  
Mon. - Tues. - Wed. - Fri., 8:00-5:30  
Thurs., 8:00-9:00  
Sat., 8:00-1:00

## SCHNEIDER'S GROCERY

CHOICE MEATS - FINE FOODS

1-LB. PKG. ECKRICH <b>Beef Franks . . . . 89c</b>	9-OZ. BAG LAY'S <b>Potato Chips . . . 53c</b>
1-LB. PKG. FARMER PEET'S RE-PEETER <b>Sliced Bacon . . . \$1.39</b>	16-OZ. NO-RETURN BOTTLES <b>Coke . . . 8 pac \$1.39</b>
ALL-BEEF <b>Hamburger . . . 3 lbs. \$2.09</b>	MT. TOP 35-OZ. FROZEN <b>Apple Pie . . . . \$1.19</b>
SAVE 30¢. TONY'S 19-OZ. <b>Supreme Pizza . \$1.69</b>	16-OZ. NO-RETURN BOTTLES <b>7-Up . . . . 8 pac \$1.39</b>
SAVE 30¢. TONY'S 15-OZ. <b>Pepperoni Pizza . . . . \$1.29</b>	16-OZ. BOX <b>Ritz Crackers . . . 73c</b>

121 S. MAIN ST.  
PHONE 475-7600

Your Store for  
**Alexander & Hornung's**  
Smoked Meats

We Accept  
**U.S.D.A.**  
Food Coupons

*Your Opinion of Us*

is our most valued asset.

## Staffan Funeral Home

"Funeral Directors for Four Generations"

124 PARK STREET  
PHONE GR 5-1444



## WANT ADS

**FOR RENT—APARTMENT**, 1-bed. room, all utilities, stove, refrigerator. Available immediately. No pets or children. 426-8119 or 426-8393. x24tf

**BUILDING SITE**—10 acres between Chelsea and Dexter about one mile from I-94, with man-made lake suitable for trout. \$18,000 or best offer. Call 426-8119 or 426-8393. x24tf

## - YOUNG -

We list and sell lake, country and town properties. Eugene Young, Real Estate & Builder, 878-3762, 11506 Dexter-Pinckney Rd., Pinckney 48169. x34tf

**CAR & TRUCK LEASING.** For details see Lyle Christwell at Palmer Motor Sales, 475-1301. 49tf

**CARPENTER WORK**—Inside or out. Mr. Coburn, 475-2893. 12tf

## COMPLETE ALUMINUM SERVICE

Siding - Awnings - Repairs  
Gutters - Storm Windows  
Remodeling

Free Estimates  
Call 475-9209

Camelot Construction  
Chelsea, Mich. x12tf

## CUSTOM BUILDING

LICENSED & INSURED  
FREE ESTIMATES  
TOTAL  
CONSTRUCTION  
SERVICES

—Residential, commercial and industrial  
—Garages  
—Remodeling - Additions  
—Aluminum Siding  
—Roofing  
—Trenching

## SLOCUM CONTRACTORS & BUILDERS

Serving Washtenaw County  
For Over 20 years  
20700 OLD US-12  
CHELSEA  
Phone 475-8321 or 475-7611 2tf

**FLETCHER'S CARE HOME**—We have a vacancy for an ambulatory lady. Ph. (517) 851-8696. 34

**CERAMIC TILE** installation; new and remodel. Reasonable prices, excellent work. Ph. Frank, 426-2280. x35

**FINE FASHIONED SHOES** and work boots by Mason. Satisfaction guaranteed. Phone 475-1603 for appointment. Ask for Ted. 37

**WANTED**—Hauling jobs, junk, wood, almost anything. Call David, 475-8984. 30tf

**ROOMS** by day, week or month. Excellent for the single man or retiree. Sylvan Hotel, Chelsea, Ph. 475-2911. x31tf

**COUNSELING SERVICES.** Phone 894-3451. x37

**FOR SALE**—AKC Doberman puppies, 9 weeks, \$75. Ph. 475-2654. -35

## WANT ADS

**FOR SALE**—Indian cents, post-cards, books, foreign coins, Australian opals, and other articles. Will treat you fine. Lawrence E. Guinan, Sylvan Hotel, 114 N. Main St., Chelsea. 23tf

**WEDDING STATIONERY**—Prospective brides are invited to see our complete line of invitations and accessories. The Chelsea Standard. Ph. 475-1371. 6tf

## McCulloch Portable Generators Chain Saws

WE SELL SERVICE, SHARPEN AND TRADE.  
Chelsea Hardware 21tf

**FOR REAL DOLLAR SAVINGS** be sure and see us before you buy any new or used car. Palmer Motor Sales, Inc. Your Ford Dealer for over 60 years. 2tf

**NEED A ROOF?** Call Toth Building & Remodeling, (313) 498-2178. 41tf

A fine selection of  
New and Used Cars  
for immediate delivery

Harper Pontiac  
Sales & Service  
475-1306  
Evenings, 475-1608 40tf

**GAR - NETT'S Flower & Gift Shop**  
Your Friendly Florist  
112 E. Middle St., Chelsea  
PHONE 475-1400

Funeral Flowers  
Wedding Flowers  
Cut Flowers (arranged or boxed)  
Potted Flowering Plants  
Green Plants - Corsages  
WE DELIVER 29tf

## Old Orchard Furniture Refinishing

**ANTIQUES RESTORED**  
Old finish removed from wood or metal safely and economically.  
513 Old Orchard  
Stockbridge, Michigan 49285  
(517) 851-8713 10tf

## OFFICE SPACE in Dexter Leasing NOW

Being renovated for occupancy about April 1. Off-street parking.  
Carl Willoughby, 426-8387

## Waggoner Real Estate

APT. FOR RENT in Chelsea—1 bedroom, stove, refrig., disposal, carpeting, air conditioning, central vacuum. No children, no pets. Ph. 1-474-8552. x35

## WANT ADS

**FOR RENT**—4,300 sq. office and warehouse with loading dock. Paved off-street parking. In Dexter. Call 426-4002 after 8 p.m. or week-ends. x12tf

**CERAMIC TILE**—Reasonable prices. Excellent work. Ph. 426-2280. x24tf

**BRICK MASON**—Brick work, block work, fireplaces, chimney repairs, homes and additions. Ph. 475-2584. x44tf

**PAINTING**—Exterior and interior. Quality workmanship, free estimates, references, reasonable rates. Ph. (517) 851-7055. x48tf

**SEE US** for transit mixed concrete. Klumpp Bros. Gravel Co. Phone Chelsea 475-2530, 4920 Loveland Rd., Grass Lake, Mich. x40tf

**TRAVEL TRAILERS**—13-ft. and up; 10x55 ft. trailers. John B. Jones Trailer Sales, Gregory, Mich. Phone 498-2855. 43tf

**KETO USED CARS**  
8020 GRAND - DEXTER  
426-4535  
CARS BOUGHT AND SOLD x38tf

**MUNITH AUCTION**—100 Main St., Munith, Mich. Auction every Sunday, 6 p.m. Danny Fleming, auctioneer. x12tf

**STOCKBRIDGE**, 13 acres, commercial, on M-52. (517) 851-8144. 35tf

**Attic Insulation**  
6" blown insulation for \$25 per 100 sq. ft.  
ARNIE RAE  
Gregory (517) 851-8762 evenings x36

**FOR SALE**—Joslin Lake, 2-acre building site, 1/4 lake privileges. Call 475-9209. x30tf

## CLEARANCE SALE On All SNOW TIRES

ALL TIRES GUARANTEED

## Full 4-Ply Polyester

Size	Price	Fed. Tax
A78-13	\$22.95	\$1.78
C78-13	\$23.95	\$1.99
C78-14	\$24.50	\$2.07
E78-14	\$24.95	\$2.24
F78-14	\$25.95	\$2.41
G78-14	\$27.25	\$2.55
H78-14	\$28.95	\$2.77
G78-15	\$27.50	\$2.63
H78-15	\$28.50	\$2.82

## Belted 2 Polyester, 2 Fiberglass Belts

Size	Price	Fed Tax
E78-14	\$25.95	\$2.33
G78-14	\$29.25	\$2.67
H78-14	\$30.95	\$2.92
G78-15	\$29.50	\$2.74
F78-14	\$27.95	\$2.50
H78-15	\$30.50	\$2.97
J78-15	\$31.50	\$3.13
L78-15	\$32.95	\$3.19

## FREE MOUNTING BALANCING EXTRA STUDS AVAILABLE

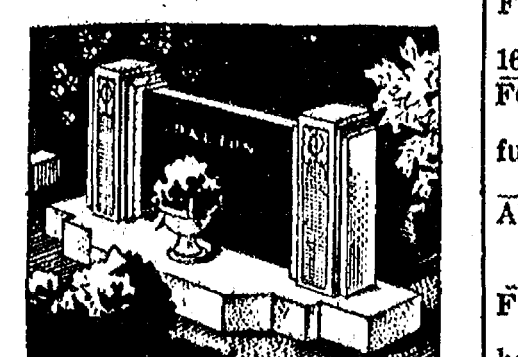
**CHARGE CARDS ACCEPTED**  
Standard Oil  
BankAmericard  
Master Charge  
American Express  
Diners Clubs  
Carte Blanche

**Palmer Motor Sales**  
63 Years in Chelsea  
Since April 1912  
Chelsea 475-1301 x36

**LOST CAT**—All white neutered male named snowball, Madison St. area, Chelsea. \$35 reward for return or valid information on whereabouts. Call Glenn Weir, 475-7509. x35

**IF YOU ARE LOOKING** for a job make sure it offers over 300 occupations to choose from, 30 days paid vacation every year, free medical and dental care, plus free recreation facilities. Today's Army offers all this and more. If you think that you may be interested and would like to get more information call 665-3731 and ask for your local Army representative, SSG Mike Stewart. x37

**BABYSITTING** in my home, full- or part-time. South of Chelsea. Ph. 475-2596. 38



**MAUSOLEUMS ★ MONUMENTS**  
BRONZE TABLETS ★ MARKERS  
**BECKER MEMORIALS**  
6033 Jackson Road  
ANN ARBOR, MICHIGAN

## WANT ADS

**SEAMLESS ALUMINUM** eaves-troughs, roofing, siding, and carpentry work of all kinds. Experienced installers. All work guaranteed. For free estimate, call R. D. Kleinschmidt Co., 426-8836. x31tf

**FOR SALE**—Tenor sax, Buscher Aristocrat, like new. Best offer. Ph. 475-8661. 13tf

**COINS FOR SALE**—Lawrence Guinan, at the Sylvan Hotel. We'll treat you fine. 30tf

**HELP WANTED**—Furniture upholsterers. Full- or part-time. Experienced only. Ph. Ypsi. 482-1409. x37

**FOR SALE**—1972 Arriens 400 SS snowmobile. 635 miles. Excellent condition. 28 h.p. Kohler engine. \$400. Ph. 428-7487. 36

**FOR RENT**—Small second-floor furnished apartment. Heat furnished. For married couple only. No children, no pets. Ph. 475-8469. 18tf

**HOUSE FOR SALE** in Chelsea. 2 bedrooms, aluminum siding, garage. Possible land contract. For appointment call 475-8516 or 428-8140. -38

## ONE ACRE LOT FOR SALE SCIO TOWNSHIP

**GUARANTEE HEALTH PERMIT**  
3 miles from Dexter schools  
Ph. 475-2828, 475-9258, 761-8800

**COUNTRY APARTMENT**—New available. Paved road, utilities included. Desire non-smoking couple, no pets. Ph. 475-8334. x36

**CERAMICS SPECIAL**—Greenware and finished projects. One day sale at 2141 Baker Rd., Dexter, Feb. 21, 10 a.m. to 5 p.m. x36

**FOR SALE**—74 Vega GT Hatchback. New snow tires, 30,000 miles, very good condition. Call 761-3531 or 994-3422. x35

**FOR SALE**—Ski-Doo 1974, 440 TNT free air. New clutch, new slide rails, excellent condition, very quick. Super trail machine. Ph. 475-9356. x36

**FOR SALE**—1947 Olds. Runs. Good shape. \$600 or best offer. 426-4109. x35

## Real Estate One Of Washtenaw

1196 M-52  
Chelsea, Mich. 48118  
We Make Things Simpler For You!

**QUICK OCCUPANCY** in this 3-bedroom ranch overlooking North Lake. Chelsea school district. 1 1/2 acres, additional acre available. \$42,500.

**FOR THE SMALL FAMILY** with big ideas. Lovely large yard, workshop, and garage. Owner anxious. \$29,500.

## DAYS - 475-8693

**Evenings—**  
Jack Edington, Manager 426-2592  
Evelyn White 475-7551  
Allen Zsenyuk 428-7824  
Jerry Stein 475-2162  
Ted Picklesimer 475-8174  
Joe O'Connor 994-1223  
Steve Flint 475-1423  
Jean Tschirhart 475-2722

**FOR SALE**—2 snowmobiles, 1971 and 1973 Sno-Jets. Very good condition. \$900 for both. 662-5290. x35

**'68 OLDS Delmont 88**—Automatic, air. Excellent running condition. \$400. Ph. 475-1445. x35

**PUPPIES**—German Shepherd and Samoyed, 8 wks. old. Ph. 475-2754. x35

**HELP WANTED**—Part-time. Good job for a retired person. Phone Methodist Home, 475-8633. x35tf

**1966 HOLIDAY Traveler** trailer, 8'x35'. In good condition. Ph. 665-3023. -36

**WANTED**—Carburetor, two-barrel for 289 engine. Phone (517) 522-8041. 35

**CARPETS a fright?** Make them a beautiful sight with Blue Lustre. Rent electric shampooer, \$1. Chelsea Hardware. 35

**Public Stenographer**  
Individual and Business  
Barbara Burda  
429-9286 x37

**HOUSE FOR SALE** by owner—Country living on 3 acres. 4 bedrooms, full basement, almost finished kitchen with separate dining area, custom built fireplace, above ground pool, outer building and many extras. Manchester schools. \$52,000. Ph. 475-1512. x35

**PUPPIES FOR SALE**—Mixed breed. Mother is pure white, purebred Samoyed. Father is German Shepherd and Collie. Puppies will make good watch dog and very good playmates for children. 475-2754. x35

**FOR RENT**—Single sleeping room, semi-private bath. Free parking. 163 Orchard St. 35

**FOR RENT**—Unfurnished first-floor apt. Heat, refrigerator, stove furnished. No pets. Ph. 475-2818. 34tf

**ALTERATIONS**—Excellent work at reasonable prices. Ph. 475-9075. -38

**FEDER PIGS** for sale. Have been wormed. Had iron shots and been vaccinated. Ph. (517) 522-4047. 35

**FOR SALE**—Twin beds, two tables and chairs, bookcases, sewing machines, typewriter and misc. items. Call 475-8296. 36

**SHEPHERD PUPPIES** to good home. Ph. 428-8770. 35

**POLE OR POST BUILDINGS**—All sizes for all purposes. Call collect (517) 782-8704 or (517) 522-8660. 38

## SOUTH ELEMENTARY SCHOOL NOTES

**FROM MR. WOJCIK**—Starting with the 1975-76 school year we are using the Holt, Rinehart and Winston reading series. Some questions have come up pertaining to the Levels your children are reading. Following are the levels and the grade equivalents:

Level 1—Kindergarten.  
Level 2—Kindergarten or 1st grade.  
Level 3—first grade.  
Level 4—first grade.  
Level 5—first grade.  
Level 6—first grade.  
Level 7—first grade.  
Level 8—first grade.  
Level 9—second grade.  
Level 10—second grade.  
Level 11—third grade.  
Level 12—third grade.  
Level 13—fourth grade.  
Level 14—fifth grade.  
Level 15—sixth grade but used for good readers in the fifth grade.  
Children are placed in a reading level that they can handle successfully. For example: a child in third grade may be reading in level 13, or another child may be reading in level 9 or 10.

**READING**—Our reading room is decorated with pictures of the presidents, symbols of our country, and valentines. Red cardinals can be found on the library chart, door and shelves. They are the new prizes for reading five books this month.

James Pearson heads the honor roll for January by reading 18 books. He chose the big penguin to take home. Craig Maciag won second prize, so he took home the black and white bookworm made like a penguin. Craig read 17 books. This is his fourth time to appear on the Honor Roll. Congratulations!

The month began by reading poems and notices from the news about the wood chuck or groundhog.

New February calendars have been sent home. January calendars are due. They must be returned to receive a free day when earned.

Brenda Rush, a second grader from Miss Danborn's room, worked very hard and has been phased out of the reading program. We miss her!

The first letter about the February Parents' Party has been sent out. Cardinals will carry a special invitation in a few days. If parents cannot come, a substitute may be chosen to represent them. Three children will be the lucky recipients of door prizes their mothers win at the party. Don't miss your child's chance to receive a prize. Circle Feb. 20 on your calendar now!

There's no substitute for a parent's interest to encourage a child to read.

## THIRD GRADE—Teacher: Mrs. Knight

**Reporters:**  
Dave Hammel, Jason Pierson, Rodney Satterthwaite

We are going to have a dental play because this is Dental Health Week. The Judge in our play is Rodney Satterthwaite; the lawyer is Jason Pierson; clerk is Joann Tobin; nurse is Becky Finch; dentist is David Bareis; mother is Stephanie Fletcher; candy is Mark Neff; toothbrush is Rachel Schell; toothpaste is Matt Stoll. Members of the speaking jury are Debbie Garman, Jeff Messman, Chuck Bollinger, and Paul Bunten. Teenager is Amy Smith; Rhonda Bentley and Gena Durgan are cast announcers; Brent Peebles is the play announcer and the rest of the class sit in the jury.

We would like to thank Mrs. Finch for coming in and showing us about doctors and nurses.

For February we are making Valentine mail boxes. For the Bicentennial we are making books and a banner.

Tuesday, Feb. 10 we are going

## WANT ADS

**REDUCE** excess fluids with Fluidex. Lose weight with Dex-a-Diet capsules, Chelsea Drug. -37

**BUILDING TO RENT**—Formerly Luke's Sporting Goods Store, 137 Park St., Chelsea. Ph. 475-1885. x36

**SMALL FARM HOUSE** wanted for young professional couple. No children. Ph. 434-3998 persistently. x35

**HELP WANTED**—Adult person for floor maintenance. Please call 475-8633, Mrs. Baldwin. 34tf

**SNOW BLOWER FOR SALE**—Jacobsen Sno-Biltz. Used very little, like new. \$75. Ph. 475-7806. -35

**CHELSEA**—3-bedroom ranch, 2 baths, sunken living room, family room with bar, located on Howard Rd. \$49,900. For an appointment call 475-7643. 35tf

**1968 CORTINA** sports car. Ph. 475-1894 ask for Terry. x33

## Cards of Thanks

**CARD OF THANKS**  
We wish to express our thanks to our many friends and relatives for the gifts, flowers, cards, phone calls and letters of congratulations on our 50th wedding anniversary. We also wish to thank all who came to our open house on Sunday. All these things helped to make this a very happy and memorable occasion and were greatly appreciated.  
Lois and Clifford Bradbury

**FIFTH GRADE—**  
**Teacher: Mrs. Fuls**  
**Reporter: Rosmarie Roy**  
We made a sweetheart tree. Kim Allen and Randy Simon drew the tree and painted it brown. The students made a heart, pasted their picture on the heart and put it on the tree. We have a bulletin board on which is written "We Are the Greatest." Here we put the A plus papers.  
In arithmetic we are studying about fractions. We have drawn many circles and divided them into fourths, thirds, halves, etc.

**Teacher: Mrs. Nance**  
We are studying spelling for the big bee on Feb. 11. Ten boys and girls from our room will compete for the school championship. They are: Thad Bell, Shannon Carpenter, Carrie Heaton, Jeanette Koch, Jeff Koepele, Susan Messner, Mike Muck, Jon Reynolds, Ann Schantz, and Dristen Thomas.  
On Feb. 20 at 7 p.m. our class and Miss Danborn's second grade will present a bicentennial program of choral reading and dancing. Please come.

## SOUTHERN BOY MANOR MOTEL

Efficiency Units - By Day, Week, or Month  
13190 M-52  
PHONE (517) 851-4213  
(2 miles south of Stockbridge)



## TODAY'S THOUGHT

By LOUIS BURGHARDT

Vice-President Rockefeller said in his acceptance speech, "There is nothing wrong with America that Americans can not right" . . .

Abraham Lincoln in 1838 tells us HOW one of today's major wrongs can be made right — "Let every American, every lover of liberty, every well-wisher to his posterity . . . swear never to violate in the least particular the laws of the country. Let reverence for the laws be breathed by every American mother, let it be taught in the schools, in the seminars and in the colleges. Let it be preached from the pulpit, proclaimed in the legislatures, and enforced in the courts of justice. If bad laws exist, they should be repealed as soon as possible. While still in force, they should be religiously observed."

Both quotations make sense . . . The first is mainly rhetoric. The second is definitive. Need more be said? . . . **BURGHARDT FUNERAL HOME**, 214 East Middle St., Chelsea, Mich. Phone 475-1551.

## SPECIALS

MILLER'S VANILLA  
**Ice Cream . . . gal. \$1.99**  
1-LB. PKG. ECKRICH  
**Sliced Bologna . . . \$1.05**  
24-OZ. CAN DINTY MOORE  
**Beef Stew . . . 79c**  
12-OZ. CAN TROPICANA FROZEN  
**Orange Juice . . . 41c**  
10-OZ. NO-RETURN BOTTLES  
**7-Up . . . 8 pac 98c**

## KUSTERER'S

FOOD MARKET  
DIAL 475-2721 WE DELIVER



Sometimes we can't help

BUT

Most of the time we can!

"We try harder because we care"



35 1/2 CUSTOMER HOURS  
Mon.-Thurs. . . . . 9-3  
Fri. . . . . 9-5:30  
Sat. . . . . 9-12  
305 S. MAIN  
Ph. 475-1355

## USED CARS AT OUR TRIANGLE LOT

M-52 and Old Manchester Road  
**\$300.00 ALLOWANCE**

**FOR ANY CAR!! \$300.00 ALLOWANCE**  
Regardless of Age, Make or Model. If need be, we will even tow. This is the minimum. Hundreds more depending on year and condition.

SEE Geo. Palmer  
John Popovich

**The Happyface Place**  
We're in business to make you smile

SEE Lyle Christwell  
Bennie Hayes

**PALMER**  
Since April 1912

**FORD**

Mon., Tue., Wed., Thurs. Till 9 p.m.  
Fri. Till 6 p.m.; Sat. Till 4 p.m.









# BOWLING NEWS



## Leisure Time

Standings as of Feb. 5

	W	L
Misfits	50	30
Unpredictables	49	31
Rug Rats	45	35
Four Stooges	40 1/2	39 1/2
Sugar Loafers	40	40
Slowpokes	39 1/2	40 1/2
Highly Hopefuls	38	42
Crackpots	37	43
Roadrunners	36	44
Holy Rollers	36	44
The Lakers	35 1/2	44 1/2
Lady Bugs	33 1/2	46 1/2

500 series: D. Dault, 502.  
400 series: R. Musbach, 444; D. Thompson, 408; J. Pagliarini, 430; V. Wheaton, 440; E. Williams, 434; G. Hoffman, 404; B. Tison, 467; S. Centilli, 438; E. Haydock, 421; J. Mull, 491; L. Haller, 457; J. Stapish, 442; B. Robinson, 408; S. Brown, 435; J. Anderson, 455; C. Engler, 409.

140 games: S. Brown, 156; B. Cekala, 143; J. Anderson, 196; A. Rivord, 144; C. Engler, 166; D. Dault, 175, 149, 178; L. Haller, 187, 146; A. Vanderwaard, 143; J. Barkley, 142; J. Stapish, 158, 157; R. Forner, 147; B. Robinson, 168; H. Dittmar, 165; D. Hafner, 146; E. Haydock, 174; J. Mull, 155, 197; P. Weigang, 143; C. Hoffman, 150; B. Tison, 148, 174, 145; G. Tallman, 145; S. Centilli, 149, 142, 147; V. Blanchard, 149; E. Williams, 150, 162; W. Trapp, 160; M. O'Donnell, 174; S. Weston, 140; E. Swanson, 147; R. Musbach, 155, 163; D. Thompson, 152; J. Pagliarini, 156, 145; K. Haywood, 149; V. Wheaton, 160, 142.

All of America's dental schools are dependent to some extent on advanced facilities in Veterans Administration hospitals.

## Seven Point Mixed

Standings as of Feb. 3

	W	L
Hi Hopes	114	47
ZAP	98	63
The Foxes	90	71
Flat Tires	89	72
Strike Outs	86	75
College Dodge	84	77
River Rats	78	83
Dexter Gear	77	84
Elliott & Sons	72	89
Bowling Wizards	70	91
7 M's Bar	59	102
Alley Runners	49	112

Men, 450 series and over: A. sen, 494; J. Fortner, 465; W. Teachworth, 493; D. Carpenter, 483; M. Fox, 517; R. Fox, 476; M. Spence, 512; G. Beeman, 607; F. Steers, 476.

Women, 150 games and over: D. Hansen, 494; J. Fortner, 465; W. 135; C. Behnke, 159, 150, 192; J. Elliott, 157; P. Fortner, 151, 171, 163; C. Fox, 154; B. Carpenter, 164, 181; G. DeSmith, 160, 155; S. Hopkins, 158; G. Harris, 156; P. Scherdt, 164; V. Guenther, 189; C. Klapperich, 154, 177; P. Norris, 180; D. Norris, 153; D. Detling, 189; H. Ward, 158; D. Lucas, 154. Women, 425 series and over: C. Behnke, 501; D. Hansen, 544; D. Detling, 449; C. Teachworth, 434; P. Fortner, 485; B. Carpenter, 482; G. DeSmith, 441; P. Scherdt, 435; V. Guenther, 453; C. Klapperich, 439.

About one million hospitalized patients and more than 12 million outpatients were treated at Veterans Administration facilities last year.

Telephone Your Club News To 475-1371.

## Chelsea Suburban

Standings as of Feb. 4

	W	L
Dancer's	104	57
Waterloo Garage	99	62
Dairy Queen	95	66
Chelsea Drug	92	69
State Farm	79	82
Chelsea Assoc. Builders	78	83
Fletcher Mobil	77	84
Frisinger Realty	74	84
Dana Dee-Lites	70	91
Mark IV Lounge	69	92
Cavanaugh Lake Store	67	94
Chelsea State Bank	59	102

150 games and over: N. Packard, 210, 238, 155; D. McAllister, 176, 182, 153; J. Buku, 162; D. Worden, 157; A. Hocking, 165, 168; M. Bolinger, 168; T. Monroe, 161, 170; M. DeLaTorre, 150, 180; P. Elliott, 186; J. Burnett, 173, 165; N. Collins, 189, 157; B. Robeson, 154, 156; N. Prater, 186; V. Weber, 152, 153; K. Chapman, 158; M. Inbody, 177, 151; J. Huston, 172, 174; S. Hafner, 161; W. Hafner, 171, 164; E. Schulz, 152, 152; P. Glibney, 175; C. Stoffer, 169, 176; D. Hawley, 174; P. Harook, 159, 189, 150; S. Bowen, 176; B. Hafley, 181, 165, 168; R. West, 179; V. Weber, 152, 153; K. Chapman, 158; M. Inbody, 177, 151; J. Huston, 172, 174; S. Hafner, 161; W. Hafner, 171, 164; E. Schulz, 152, 152; P. Elliott, 186; J. Burnett, 173, 165; N. Collins, 189, 157; B. Robeson, 154, 156; N. Prater, 186; M. Bolinger, 154, 163; T. Monroe, 161, 170; M. DeLaTorre, 158, 180.

425 series and over: N. Packard, 571; D. McAllister, 513; B. Hafley, 514; J. Schulze, 466; D. Vargo, 460; L. Beeman, 440; R. West, 456; C. Stoffer, 489; D. Hawley, 467; P. Harook, 498; S. Bowen, 460; V. Weber, 450; K. Chapman, 530; M. Inbody, 470; J. Huston, 493; W. Hafner, 460; E. Schulz, 445; P. Elliott, 477; J. Burnett, 484; N. Collins, 481; B. Robeson, 445; N. Prater, 474; M. Billinger, 440; T. Monroe, 458; M. DeLaTorre, 481; J. Buku, 449; A. Hocking, 476.

## Chelsea Women's

Bowling Club

Standings as of Feb. 4

	W	L
Jiffy Mixes	84	28
Thompson's Pizza	62 1/2	29 1/2
Chelsea Milling	60	32
Palmer Ford	57 1/2	34 1/2
Parish's Cleaners	56	36
Washtenaw Engineering	53 1/2	38 1/2
Norris Electric	48	44
Mark IV	46	46
Niles Amway	45	47
Chelsea Grinding	43	49
Larry's Roadside Market	43 1/2	49 1/2
Wolverine Bar	42	50
Klink Excavating	41	51
Lloyd Bridges	40	52
Norm's Barber Shop	37	55
Rushing's Temp. Help	36	56
Glenn's Mobil	26	66
Joe & Judy's	25	67

450 series and over: L. Bradbury, 567; J. Norris, 551; J. Rowe, 537; P. Poertner, 531; B. Fritz, 500; R. Bush, 489; N. Kern, 485; J. Hafner, 483; L. Orlowski, 482; B. Larson, 471; R. Hummel, 470; I. Fouty, 469; A. Knickerbocker, 468; E. Whitaker, 461; A. Alexander, 461; D. Frisbie, 460; B. Fike, 458; N. Packard, 458; A. Fahrner, 452.

150 games and over: L. Bradbury, 209, 190, 168; J. Norris, 153, 210, 188; J. Rowe, 209, 184, 153; P. Poertner, 193, 189; B. Fritz, 161, 155, 184; R. Bush, 169, 176; N. Kern, 160, 159, 166; J. Hafner,

150, 157, 176; L. Orlowski, 164, 181; B. Larson, 160, 71; R. Hummel, 158, 84; I. Fouty, 171, 162; A. Knickerbocker, 192; E. Whitaker, 155, 170; A. Alexander, 154, 155, 152; D. Frisbie, 152, 62; B. Fike, 172, 152; N. Packard, 154, 199; A. Fahrner, 153, 176; L. Hafner, 158; B. Stahl, 169; K. Hafner, 132; M. Kelly, 154; D. Eisenman, 154, 155; B. McGibney, 160, 163; A. Bycraft, 51; D. Rudnicki, 155; D. Cozzens, 163; D. Elsenbeiser, 152; M. E. Sutter, 159; D. Alber, 151; A. Sindlinger, 192; J. Fitzsimmons, 150; D. Fouty, 168; S. Klink, 157, 165; D. McCalla, 166; K. McCalla, 158; D. Judson, 150; S. Robards, 158; M. Kozminski, 168; N. Ruja, 152; D. Rosentreter, 150; B. Bridges, 16; A. Dowhal, 153; D. Norris, 151; J. Alber, 151.

## North School Notes

### FROM THE PRINCIPAL—

North school was visited by Mrs. Eulalie Packard, Mrs. Mary Kniss, and Mrs. Norma Seyfried of the Chelsea VFW Auxiliary. They presented classroom flags to several classrooms that have been added to North school. The presentations included a talk about the significance of the flag to our country, some history of the flag, flag etiquette, and the recitation of the pledge of allegiance by the classes involved. They also presented a book about American flags to the media-center, and a desk flag to the principal.

### THIRD GRADE

Teacher: Mrs. Dykstra  
Mrs. Dykstra's 3rd grade has been working hard since Christmas. In math, we have moved on from multiplication to geometry for a while. While learning about shapes and angles and lines we keep practicing our multiplication facts. In English we are learning how to write good letters. Some of us still have a hard time remembering where to put those capital letters and commas.

We are so happy that we can finally use the new library. Now we can find books about things we are really interested in—dogs, dinosaurs, airplanes and things like that.

We celebrated the birthdays of David Dianciolo, Michael Hurst, John Poulter and Sheri Rowe in the month of January.

In art we are having a good time making puppets.

### Teacher: Mr. Smith

This month has been a fun month for us so far. We gave away all of our gerbils and got a new pair of young gerbils to keep in our room. Our rabbit is doing fine, sometimes we let him out to hop around the room. He is half wild and half white rabbit so he has some funny instincts which make him hop around very funny when he is loose.

We have been studying the human body and have made some diagrams of different parts of our bodies. It is very interesting to learn how important our five senses are and how we take them for granted sometimes.

We had a couple of birthdays in January: Marie Bulick and Rebecca Lee. We were going to have a nice party on Rebecca's birthday but school was closed because of snow.

In social studies we have been working on the Bicentennial and have learned a lot about the first years before we became a country. Some women from the VFW came to the 3rd grades and presented us with a new flag and a Bicentennial calendar. A lot of our kids have made good reports for a big Bicentennial bulletin board we have made.

We are looking forward to celebrating Washington and Lincoln's birthdays this next month and also are ready for a Valentine's Day party. See you next month.

### Teacher: Mrs. Schlup

Mrs. Schlup's class has been working diligently on their times tables. Most of the class knows the multiplication facts through times five. We have used products and factors in family of facts and have made our own multiplication tables. We also made fish which have the correct answers on the back so the class can check themselves.

Our class has learned many interesting things about the planets in our solar system. Each child chose the planet they were most interested in and gave a report to the class about it.

The class wrote great stories about the Boston Common in the 1700's to coincide with our social studies unit on Boston.

We are all looking forward to South school's fun fair on Friday. Everyone is sure to have a great time.

### FOURTH GRADE—

Teacher: Mrs. Hafer

Reporters: Kim Kleis, Steve Ramsey

Our class had a good idea for the birds. Some of the kids in our class went down McKinley St. and got some old Christmas trees and brought them to school to put in the outdoor courtyards. Then we decorated them with strung popcorn; took halves of grapefruit and put bird seed in them; pine cones with peanut butter on them. We haven't seen any birds but the popcorn is disappearing.

We have also made a lot of origami. We have made cats, dogs, and peacocks. Walter Gray got a book from the library on origami and took it home and made a whale, a piano, a boat, a bird, a two-man boat, a butterfly, a cat,

## Wrestler of the Week



SOPHOMORE VARSITY WRESTLER, RICK BEEMAN, at 132 pounds, has posted a 4-13 record for this season. A record, he hopes to see improve. Rick said that he likes wrestling over all other sports because of the individual aspects. And commenting on what he termed "a not too good season," Rick said he had a lot to learn about outsmarting and out-manuevering his opponent. He even plans to wrestle when he goes to college. Rick also wrestled last year with the varsity grapplers at 119 pounds. He is the son of Mr. and Mrs. Donald Beeman of Waterloo Rd.

a salt and pepper shaker and a swan. We have been studying Japan and we made haikus. We have also been working very hard on our multiplication. We have two birthdays in January. Valerie Kelemen and Michelle Fletcher. Teacher: Mrs. Schmidt Reporter: Julie Dunlap We are studying about India and

our class made picture maps on India. Our class is glad that we can use our new library. We are studying about Africa and its people and country. We have a new boy in our classroom and his name is Mike Wynn and he is from Ann Arbor. Sheila Briggs moved to Willis. January birthdays were John Hughes and Tom Mull.

**BUSINESSMEN'S LUNCHEON**  
Served from 11:30 to 1 Daily  
**MARK IV LOUNGE**  
PHONE 475-8141  
1180 M-52 CHELSEA

CUSTOM  
**BUMPING and PAINTING**  
FREE ESTIMATES - ALL MAKES  
Get the Best for Less!  
**FRANK GROHS CHEVROLET**  
Phone 426-4677 Dexter, Mich.

Now Serving at  
**THE CAPTAINS TABLE**  
Your Favorite Dinner Entrees  
STEAK - ROAST BEEF - PORK CHOPS  
HAM - CHICKEN - SHRIMP  
LAKE PERCH and more  
All entrees include a choice of salads at our NEW SALAD BAR, potato or vegetable and roll. Serving Begins at 4:30 p.m.  
Also available are  
**SANDWICH PLATES**  
served with fries and salad  
— and —  
**WAIST-WATCHER SPECIALTIES**  
**THE CAPTAINS TABLE**  
8093 Main St., Dexter Ph. 4426-3811  
Monday-Wednesday 6 a.m. to 9 p.m.  
Thursday-Friday 6 a.m. to 10 p.m.  
Saturday 7 a.m. to 9 p.m.  
CLOSED SUNDAY

**BRUNSWICK AUTOMATIC SCORING**  
OPEN HOURS:  
Sunday 12 Noon to 11 p.m.  
Monday 10 a.m. to 1 a.m.  
Tuesday 9 a.m. to 1 a.m.  
Wednesday 10 a.m. to 1 a.m.  
Thursday 10 a.m. to 1 a.m.  
Friday 10 a.m. to 1 a.m.  
Saturday 9 a.m. to 1 a.m.  
ENJOY LIFE - BOWL!  
Bring the family bowling this week-end  
**CHELSEA LANES, Inc.**  
1180 M-52 CHELSEA  
PHONE 475-8141

**COME TO THE FINISH-IT-YOURSELF OPEN HOUSE**  
See how Finish-It-Yourself people are making their dream of owning a home come true.  
Here's what one family says:  
"By doing the finishing ourselves we saved \$8,000. Anybody can do it if they're willing to do some work."  
Jack and Barbara Herron, Reno, Wash.  
THOUSANDS OF PEOPLE HAVE SAVED MONEY BUILDING FINISH-IT-YOURSELF HOUSES. HERE'S HOW CAPP HELPED:  
QUALITY CONSTRUCTION. Capp does the heavy work, you do the finishing. You end up with a bigger, more solidly built home than you thought you could ever afford.  
79 MODELS. Select any one model, it's your way of living... and your  
FINISHING YOUR HOME. The more work you do yourself, the more you save.  
FINANCING. Because we believe in our homes and the people who build them, we will help you arrange for financing.  
104-PAGE CATALOG. The new CAPP catalog explains the Finish-It-Yourself Plan and you can get it free by simply asking for it.  
See how a family of four is building their Finish-It-Yourself Home.  
WHERE: Ricky Cole, 5450 9th Road, Brookridge, Michigan  
DIRECTIONS: From Brookridge go north on M-52 3 miles to 5450 Road. East 1/4 mile to 5450. Follow CAPP Open House sign.  
WHEN: February 12, 1976, 10 a.m. to 5 p.m.

**Ford Dealer Limited Edition Sale**  
\$200 off base sticker price—the new Limited Edition Ford Elite.  
(Quantities are limited.)  
With all these standard features:  
• Full vinyl roof  
• Twin opera windows  
• 351 CID V-8 engine  
• Automatic transmission  
• Power steering  
• Power front disc brakes  
• Steel-belted radials  
• Solid state ignition  
Limited Edition only:  
• Unique wheel covers  
• Special bench seat  
• Special door trim panels  
• Regular steering wheel  
• Selected matching cloth and vinyl interiors  
  
(Car shown with white sidewalls \$39 extra)  
Buy now for extra value at your Ford Dealer Limited Edition Sale.  
**SEE YOUR LOCAL FORD DEALER**



## Beach School Basketball Intramurals Continue

Intramural basketball players at Beach Middle school are still dribbling, shooting and making baskets every Wednesday when they face new teams.

Standings in the Boys Division after four weeks of play are as follows.

	W	L
McGill	4	0
Thornbury	3	1
Davis	3	1
Kolander	1	3
Umstead	1	3
Wilson	0	4

In games played last week, Thornbury's team whipped Wilson's team, 28-15; McGill's team ousted Umstead's team, 24-13; and Davis' team kicked over Kolander's team in overtime play, 23-21.

High scorers among those in the Boys Division are Pat Wade who put in 14 points; Dan McGill and Jim Stock who managed to rack up 12 points, and Mark Barnes and Dan Pfeifer with 10 points each.

In the Girls' Western Division, Push and Bort are tied for first place honors, each with 4 and 0 records. Botsford and Wood have each won one and lost three of their games, while Connell's team has yet to mark up a victory.

High scorers among the girls were Nanette Push with 14 points, Mary Boylan who put in 13 points and Rae Apilado with 10 points.

In game play Bort's team held down Botsford's team for a 12-2 defeat and Push's team ran around Wood's team to defeat them, 35-8.

Patti Hume was high scorer in the Girls Eastern Division intramural play last week with eight points. Lois Brown followed with

seven points, while Molly Eisele and Tammy Sabo each put in six points.

Results of last week's play are, Hume's team won an overtime victory over Sabo, 14-12; Brown's team booted Owings, 10-6, and in another overtime play Schwarze's team canned Connell's team, 12-10.

Standings in the Girls Eastern Division are:

	W	L
Schwarze	3	1
Brown	2	2
Hume	2	2
Owings	2	2
Sabo	1	2

### Ronald Joseph Will Study Auto Technology At Lincoln Tech

Ronald E. Joseph, 523 McKinley, has been accepted by Lincoln Technical Institute, Indianapolis, Ind., where he will study automotive technology.

Joseph is scheduled to begin the course on Aug. 2. The course is designed to prepare individuals for rewarding careers in the automotive service industry.

He is currently attending Chelsea High school.

A new VA record for a single sale of silver bullion was set last month when the agency sold an unprecedented 210,803 fine troy ounces for \$911,933. Supply service reports the amount anticipates an increase of about 50 percent for 1976 from expended x-ray solutions and the disposal of x-ray films.

## Cager of the Week



DEAN THOMPSON (14): "We've got to give ourselves a lot of credit," says junior guard Dean Thompson. "We've lost players, we have had a bad season, but we haven't fallen apart. We just hang in there." Thompson who stands 5'11" is in his first year with Chelsea High school's varsity basketball team. "I like basketball. I've always liked basketball. I've been playing since the 7th grade," Dean said that at the beginning of the season he was starting, but that now Coach Ballstrere is working with some different combinations that leave him coming off the bench, though he stresses he doesn't mind. For Dean it is all good experience for next year. "Our (the juniors) year will come next year," he commented. He then remarked he is anxious to see next year's line-up when some of the talented junior varsity players are promoted. Dean is the son of Mr. and Mrs. Donald Thompson of 227 Washington St. He has two brothers, one of which, 15-year-old Dennis, plays basketball, and a sister.

### Paul Wood Posts All-A Record at MSU

Paul A. Wood is among a total of the honor students, 502 were from Michigan and 139 were from out of state.

More than 55 percent of all money spent by the Veterans Administration on procurement in fiscal year 1975 went to small business firms.

Paul, the son of Mr. and Mrs. Clarence Wood of 646 Flanders, is a freshman in telecommunications at MSU.

## SEC ROUND-UP:

### Dreadnaughts Push Lincoln to Final Second Before Giving Up

Lincoln High school just brushed by Dexter High last Friday evening to put in a last-second basket to give the team its 12 consecutive victory of the season. They rank at the top of the Southeastern Conference ladder with a 10-0 record. Their own Bulldogs, on the other hand, suffered another defeat last Friday evening. To see just how all the conference teams fared, read on.

**Saline 89, Novi 72—**  
A balanced attack gave the Hornets their victory over Novi last Friday evening. Taking a 16-14 lead at the first quarter, the Hornets made it 35-29 to eventually topple Novi in the remaining two quarters of play. In addition to that the Hornets had four starters who scored in double figures.

**Milan 94, South Lyon 40—**  
The Big Reds had no trouble sinking South Lyon last Friday evening. Al Tallas led Milan with an 18-point game while Jim Dutton had 14. Leading the Lions was Rob Jorae with 13 and Kevin Baize with 12 points.

**Lincoln 72, Dexter 71—**  
Another scare like this and the Raisinsplitters may not be able to pull off a third one-point victory. Fans will remember when Chelsea scared the Lincoln High team earlier this season. The team's center, Darrell Sizemore, hit a 25-foot jump shot at the buzzer for the victory. However, the Dreadnaughts nearly killed it for them

moments before when Bill Mussio hit on the first half of a two-four shot to put the Dreadnaughts ahead by one point.

**Brighton 58, Chelsea 45—**  
The Bulldogs went against the Bulldogs last Friday evening. The only problem? The right Bulldogs didn't win. A press and a change in the defense gave the game to Brighton High school during second half play. Knowing Chelsea's strong Randy Guenther, the Brighton Bulldogs assigned their best defensive player, Steve Barry, to shut him off. He as partially successful as Guenther shot for 20 points. Brighton's Dean Clark put in 15.

### Karen Schafer Wins Scholastic Honors At Western Michigan

Western Michigan University Scholarship Committee has designated 33 WMU students as "Distinguished Senior Scholarship" honorees for the winter semester. Among them is Karen L. Schafer, the daughter of Mr. and Mrs. Robert N. Schafer of 1575 Pierce Rd.

Those named were selected on the basis of their over-all grade point averages, needing a minimum 3.5 grade average, based on 4.0 being all A grades. Consideration for extra curricular activities is included in the selection criteria.

SOUTHEASTERN					ALL				
	W	L	Pct		W	L	Pct		
Lincoln	10	0	1.000		12	0	1.000		
Milan	8	2	.800		11	4	.733		
Saline	7	2	.778		10	2	.833		
Dexter	5	5	.500		8	7	.533		
Novi	4	6	.400		7	7	.500		
Brighton	4	4	.400		7	8	.467		
S. Lyon	1	8	.111		3	12	.200		
Chelsea	0	10	.000		2	12	.143		

SCORES				
Lincoln 72, Dexter 71				
Saline 89, Novi 72				
Milan 94, South Lyon 40				
Brighton 58, Chelsea 45				

### SCHOOL LUNCH MENU

Week of Feb. 16-24  
Monday—No school.  
Tuesday—Pasta with cheese, buttered wax beans, bread and butter, fruit Jell-O and milk.  
Wednesday—Pizza slice, buttered corn, bread with peanut butter, pear dessert, caramel coffee cake and milk.  
Thursday—Tacos with trimmings, soup of the day, crackers, apple sauce, ginger bread and milk.  
Friday—Macaroni and cheese, buttered peas, biscuits and butter, orange juice, chocolate eclair and milk.

Any speaker, or writer, who pleases everyone has almost certainly said nothing of importance.

## Jeff Daniels Appearing in CMU Play

Jeff Daniels, a junior at Central Michigan University, plays the role of "Mobyus" in a school production of "The Physicists."

The play will be shown Feb. 11-14 at 8 p.m. at Bush Theatre on the CMU campus. The plot concerns three scientists who help insanity to commit themselves to an asylum run by the autocratic and scheming Fraulein von Zand.

They assume the names and characteristics of King Solomon, Sir Isaac Newton and Albert Einstein, with "Newton" and "Einstein" attempting to persuade "King Solomon" to divulge his secret scientific formula and make it available to them.

A set of circumstances, a triple murder and the Fraulein's duplicity pose an insurmountable problem for them and they are faced with the chance of being captives of their own masquerade for the rest of their lives.

William Haushalter of CMU's Theatre and Interpretive Arts area is director of the dramatic comedy. Jeff is the son of Mr. and Mrs. Robert Daniels of 665 Washington.

Michigan's commercial growing of sweet corn is found in largest quantities in the counties of Monroe, Macomb, St. Clair, Wayne and Washtenaw. Michigan's 1974 sweet corn harvest amounted to 61.7 million pounds. We ranked seventh in the U. S. with this crop valued at \$4,841,000.

Through fiscal year 1975, the federal government had spent a total of \$239 billion on benefits programs for veterans of all wars.

## CALL OR STOP IN CHELSEA GLASS WORKS

WORKMANSHIP AND MATERIALS FULLY GUARANTEED.  
Open Daily 8 a.m. to 5 p.m.; Sat., 8 a.m. to 1 p.m.  
140 W. Middle, Chelsea Phone (313) 475-8667

### WE REPAIR AND REPLACE:

- ★ STORE FRONTS
- ★ FURNITURE TOPS
- ★ SHOWER DOORS
- ★ THERMOPANES
- ★ AUTO GLASS - Including Windshields
- ★ MIRRORS
- ★ PATIO DOORS
- ★ TUB ENCLOSURES

Free Pick-up and delivery on auto work.

Storm Door & Window Reglazing & Screens.

COMMERCIAL BUILDINGS OR RESIDENTIAL

PROMPT SERVICE REASONABLE PRICES

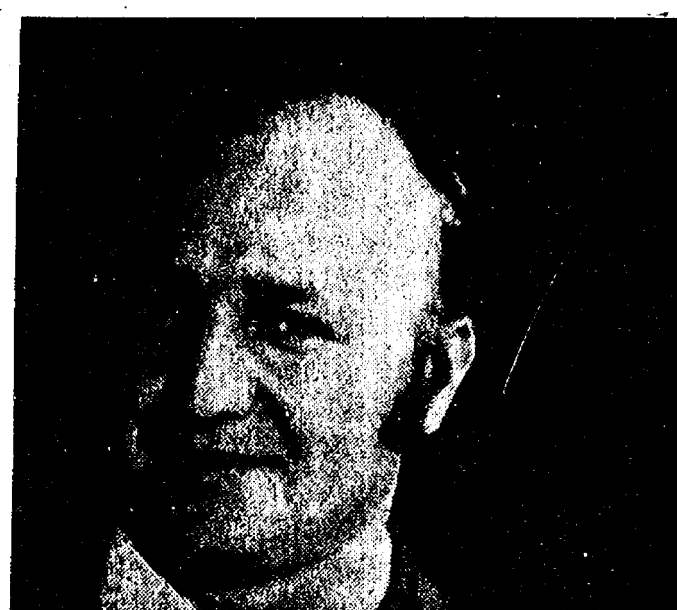
## FRIDAY NIGHT SPECIALS

6:00 TO 8:30 P.M. ONLY — FRIDAY, FEB. 13

<p>COUPON</p> <p><b>VALENTINE NIGHT WEAR</b></p> <p><b>\$2.00 OFF</b></p> <p><b>KAREN'S BOUTIQUE</b></p>	<p>COUPON</p> <p><b>DRIED FLOWERS</b></p> <p>\$1.00 Value</p> <p><b>77c</b></p> <p><b>GROVE'S 5c to \$1 Store</b></p>	<p>COUPON</p> <p>U. S. NO. 1 B-SIZE</p> <p><b>POTATOES 5-Lb. Bag</b></p> <p><b>25c</b></p> <p><b>KUSTERER'S Food Market</b></p>	<p>COUPON</p> <p><b>THIS SPACE FOR SALE</b></p> <p>Call 475-1371</p>
<p>COUPON</p> <p>WOOD HANDLE</p> <p><b>STEAK KNIVES</b></p> <p><b>17c ea.</b> (Limit 6)</p> <p><b>GAMBLES</b></p>	<p>COUPON</p> <p>10-OZ. NO-RETURN BOTTLES</p> <p><b>PEPSI-COLA 8 pac \$1.09</b> (One per coupon)</p> <p>Additional \$1.49</p> <p><b>CHELSEA PHARMACY</b></p>	<p>COUPON</p> <p><b>10% OFF</b> Any Woman's</p> <p><b>SLACK or SKIRT SET</b></p> <p><b>DANGER'S</b></p>	<p>COUPON</p> <p><b>FREE PLANT</b> (One per coupon)</p> <p><b>CHELSEA CARD and GIFT</b></p>
<p>COUPON</p> <p><b>STEEL SNOW SHOVELS</b> Wood Handled</p> <p><b>\$2.98</b></p> <p><b>CHELSEA HARDWARE</b></p>	<p>COUPON</p> <p><b>CARPET SAMPLE RUG 18" X 27" - 98c</b></p> <p><b>Buy 2 - Get 1 FREE!</b></p> <p><b>MERKEL HOME FURNISHINGS</b></p>		

## Lloyd Bridges Chevrolet Proudly Proclaims February FRED KLINK MONTH!

Please join with us this February in celebrating Fred's 13th award winning year of selling Chevrolets and servicing many satisfied Chevrolet owners in our area!



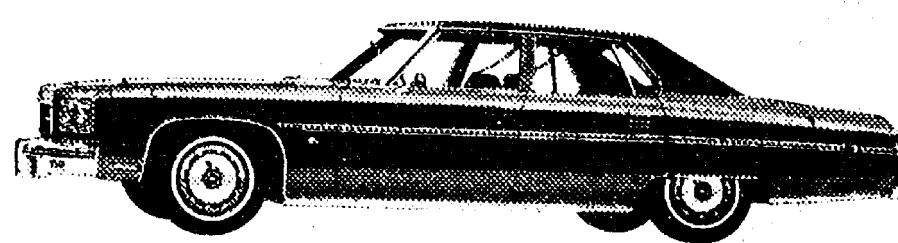
FRED KLINK

### FRED SAYS:

You won't get stuck with these sale-priced pick-ups.

1974 CHEVROLET K-10 4-wheel dr. pick-up, V-8, 4-speed, factory air, black with red vinyl trim. Super sharp. Only 26,000 miles.

1973 CHEVROLET CHEYENNE 4-wheel dr. pick-up. 34,000 actual miles on this well-kept one-owner. V-8, auto., full power, deluxe green and white two-tone.



Caprice Classic 4-Dr. Sedan

Because of this Special Celebration, Lloyd Bridges has made February a Special Savings Month too! All new cars and trucks are reduced for immediate sale — and used car trade-ins have never been higher! Our friendly sales and service teams are ready when you are. See us soon!

## LLOYD BRIDGES CHEVROLET TRUCKS

"For Quality, Service and Price"

SALES HOURS:

Monday ..... 8 a.m. to 8:30 p.m.  
Tuesday thru Friday ..... 8 a.m. to 6:00 p.m.  
Saturday ..... 8 a.m. to 5:00 p.m.

**475-1373**  
CHELSEA



# GRAND OPENING

**Thursday, Friday and Saturday, Feb. 12-13-14**

**OPEN 8 a.m. to 8 p.m. ALL THREE DAYS**

**SAVE ON HUNDREDS OF ITEMS DURING OUR GRAND OPENING**

## WONCH BATTERIES

*Quality at an Affordable Price!*

SNOWMOBILE BATTERY ... \$21.95  
GM & CHRYSLER, 2 yr. warr. \$24.95  
FORD, 3-yr. warr. . . . . \$25.95  
VW 12-VOLT . . . . . \$25.95

## R & N BATTERY CHARGERS

Model 126ST (60-amp. Boost) \$42.50  
Mod. 126AC (fully automatic) \$31.89  
Model 126, 12-amp. . . . . \$25.10  
Model 66, 6-amp. . . . . \$19.90

**BATTERY CABLES** 12 Ft. **\$5.40**

## MOTOR OIL

QUAKER STATE 10W30 or 10W40  
PENNZOIL **68¢** qt.  
VALVOLINE

CASE OF 24 QTS. - \$16.00

VALVOLINE SNOWMOBILE OIL ... qt. 79¢

KLOTZ SNOWMOBILE OIL .. pt. \$1.20  
1 QT. \$1.75

<b>TUNG-SOL HEADLAMPS</b>	<b>AVIEX QUICK START SPRAY</b>
No. 4000 ..... \$2.25	<b>88¢</b>
No. 5001 ..... \$2.25	
No. 6014 ..... \$2.50	

**REM-LINE TOOL BOX** 20" x 8 3/4" x 9 3/4" High **\$12.95**

GENERAL DROP LIGHT, 25 ft. . \$5.25  
6 1/2-GAL. WOLVERINE  
Snowmobile Gas Mixing Can .. \$4.50

**KAR CHECK**  
INDUCTIVE POWER TIMING LIGHT  
Reg. \$36.58 **SPECIAL \$29.95**  
COMPRESSION TESTER . . . . \$3.99  
TACH-DWELL TESTER . . . . \$15.99

**ROCKWELL GRINDER**  
1/3 H.P. **SPECIAL \$95.95**  
Reg. \$119.95

7-Pc. IRWIN SCREWDRIVER SET \$4.95

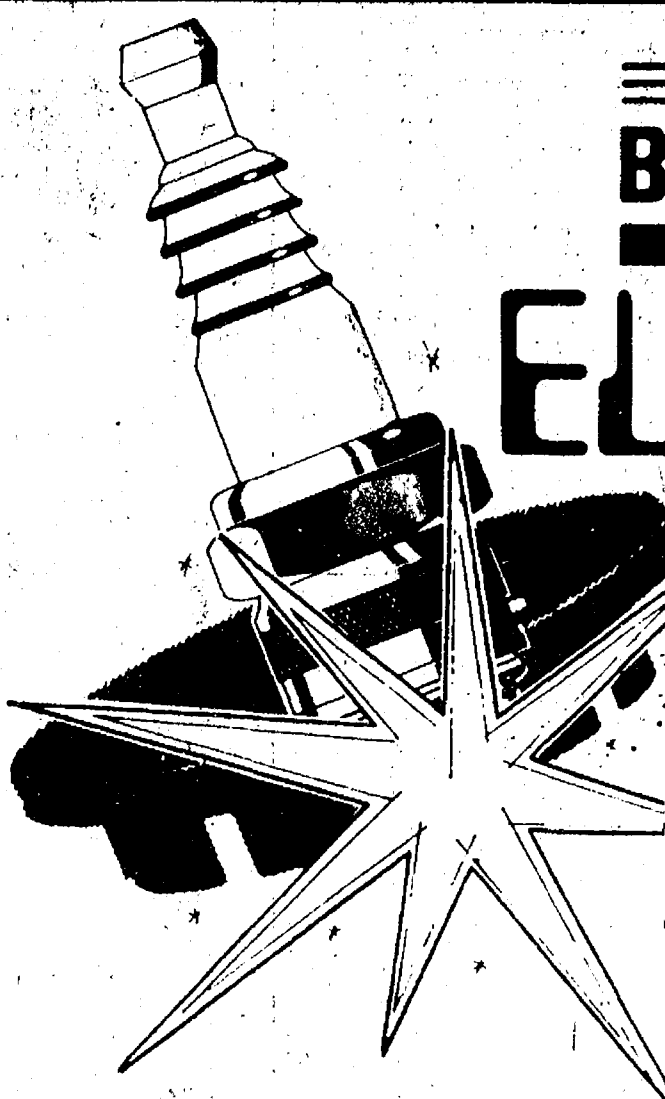
## Drawing Sat., Feb. 14 at 7:30 for FREE DOOR PRIZES

REGISTRATION STARTS FEB. 12 - STOP IN AND REGISTER - NO PURCHASE REQUIRED

One Registration per Person. Must be 16 or older.  
Winner need not be present.

1st—PORTABLE TV, B/W	9th—ARPEGE LANVIN SET
2nd—Set GABRIEL HI-JACKER SHOCKS	10th—TIMEX DAY-DATE WATCH
3rd—I.R. 1/4" ELECTRIC DRILL	11th—CHANEL NO. 5
4th—MARAMONT LINED JACKET	12th—STEAK KNIVES
5th—MARAMONT LINED JACKET	13th—CLOCK
6th—GILLETTE HOT SHAVE	14th—POPCORN POPPER
7th—TURNER TORCH KIT	15th—FENDER COVER
8th—ARPEGE LANVIN SET	16th—VW JACKET

5 SILVER DOLLARS WILL BE GIVEN AWAY EACH DAY OF THE GRAND OPENING.



**BORG WARNER**  
**ELECTRONIC IGNITION**

REG. \$75.15  
**Special \$47.95**

**Control Ignition With ...**  
**Beam-Of-Light Precision**

- ★ INCREASES GAS MILEAGE
- ★ SURE FIRE FOR WINTER STARTS
- ★ ELIMINATES POINTS & CONDENSERS
- ★ LONGER SPARK PLUG LIFE
- ★ TUNE-UPS COST LESS
- ★ FEWER TUNE-UPS

## "GUMOUT"

Carburetor Cleaner Liquid . . \$1.45  
Carburetor Cleaner Spray . . . \$1.59  
Choke Cleaner Spray . . . . \$1.25

**HEIN - WARNER**  
**FLOOR JACK**  
2,500-Lb. Capacity  
Reg. \$119.95 **SPECIAL \$94.50**

**DRIVE-ON CAR RAMPS**  
Reg. \$35.95 **SPECIAL \$27.95**

**S-K TOOL SETS**  
**10% OFF**

6-Pc. COMBINATION  
WRENCH SET  
3/8" thru 1 1/16"  
**\$4.99**

**DRY GAS - 49¢**  
Prevent gas line freeze

**RAY-O-VAC BATTERIES**  
C & D CELLS ..... 23¢  
AA CELLS ..... 21¢

Windshield Scraper  
& Brush  
**90¢**

**WINDSHIELD WASHER**  
**SOLVENT**  
65¢ gal.

**GATES SPORTLINE**  
**SNOWMOBILE BELTS**  
**25% Off**

**ACE HANSEN**  
**13-PC. DRILL SET**  
Reg. \$17.95 **\$10.95**

**HUFFY OIL SPOUTS**  
**\$1.59**

**WARNER BRAKE FLUID**  
12-oz. can . . . . . \$1.20  
2 for \$2.00  
1 Qt. Can . . . . . \$2.95

**A-C FILTERS**  
AIR - OIL - GAS  
**ALL 1/2 PRICE**

**DUPONT RALLY CAR WAX**  
Reg. \$3.57 - **SPECIAL \$2.35**

**RAIN DANCE CAR WAX**  
Reg. \$5.36 - **SPECIAL \$3.49**

RAIN CHECK ON ALL ITEMS SOLD OUT - RAIN CHECK ITEMS MUST BE PAID FOR IN ADVANCE

**CHELSEA  Parts Plus AUTOMOTIVE**

1414 S. MAIN, CHELSEA

Honoring BankAmericard and Master Charge

PHONE 475-9106











Table with 10 columns: Township, Range, Section, and various land parcels with their descriptions and acreage. The table is organized into sections for different townships and ranges, with detailed descriptions of land parcels and their acreage.



The Chelsea Standard, Thursday, February 12, 1976 17









**Polly's** MASTER  
MARKETS

1101 M-52

**CHELSEA, MICH.**

(Corner M-52 and Old U.S. 12)

Supplement to Ann Arbor News, Chosen Standard

**get to know us...**

**WE CAN HELP YOU SAVE ON YOUR FOOD BILL!**

**OPEN .  
DAILY:**

**8**

**A.M. TO**

**10**

**P.M.**

**OPEN  
SUNDAY:**

**9**

**A.M. TO**

**9**

**P.M.**



**QUALITY PRODUCE**



**QUALITY MEAT**



**COLD BEER & WINE**



**LOTTERY TICKETS**



**SIDES OF BEEF**



**FRUIT BASKETS**



**DRY CLEANING**



**PHOTO PROCESSING**



**VARIETY AT LOW PRICES**





**Polly's** MASTER MARKETS  
1101 M-52  
**CHELSEA, MICH.**  
(Corner M-52 and Old U.S. 12)

WE RESERVE THE RIGHT TO LIMIT QUANTITIES  
ON ALL SALE ITEMS TO REASONABLE AMOUNTS

# the **BIG** SAVINGS and the **Small** PRICES of **It** in **76**

ON WEEKLY BONUS and IN-STORE COUPONS Plus MANY BIG FEATURE ITEMS!

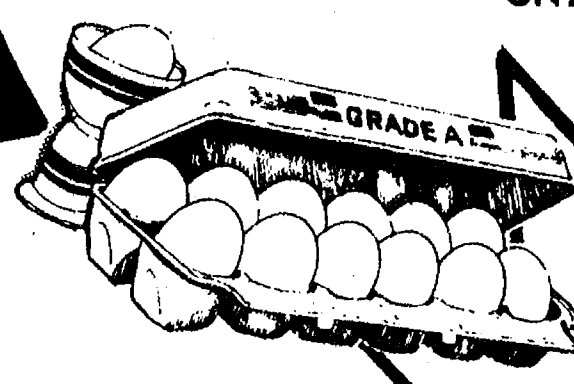
ONE EVERYDAY LOW, LOW GROCERY, MEAT, DAIRY, PRODUCE, BAKERY and FROZEN FOODS!

**LOWER TOTAL FOOD BILL!**

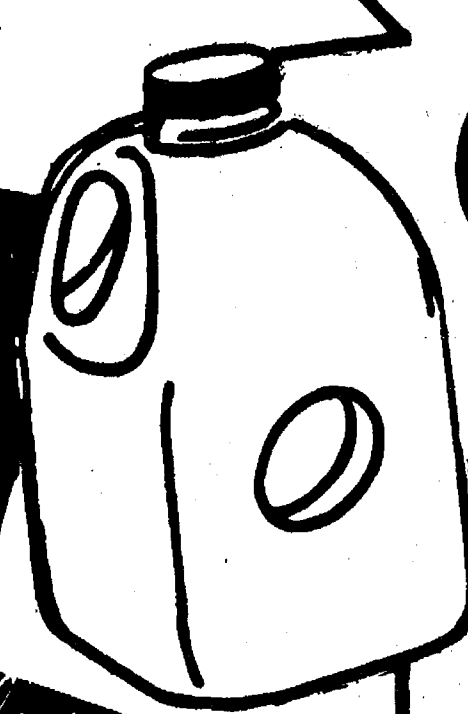
MIX OR MATCH  
**Sealtest**  
Chocolate  
Buttermilk  
Homogenized  
**MILK 3 Quarts For \$1**

**Queen of Scots TOMATO SOUP 10.5 oz. 15¢**

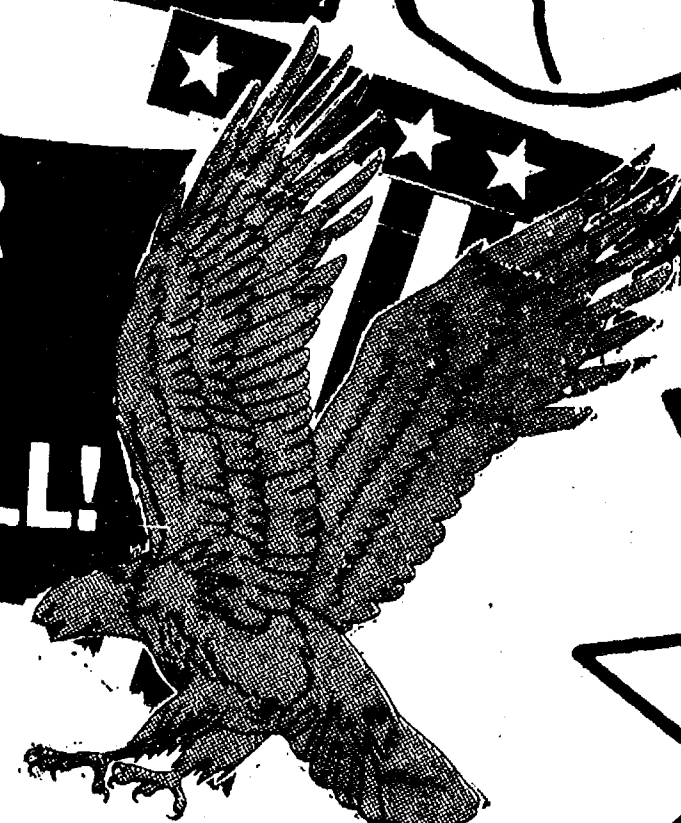
Regular or Diet  
**FAYGO POP 48-oz. 39¢**



Polly's Grade A  
**LARGE EGGS**  
Dozen **69¢**  
SAVE UP TO 48¢ WITH BONUS COUPON



Sealtest 1/2%  
**LO-FAT MILK**  
Gallon **98¢**  
SAVE 27¢ WITH BONUS COUPON



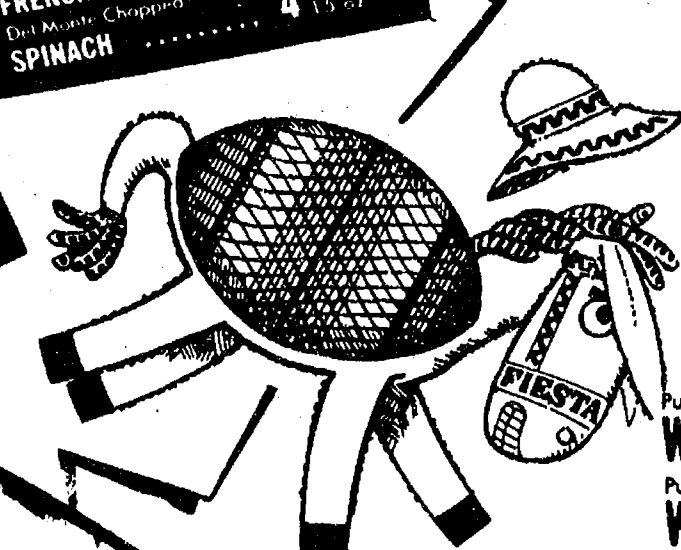
Polly's Quality King Size  
**WHITE BREAD**  
24-oz. Loaves **\$1.03**  
SAVE 39¢ WITH BONUS COUPON



**FIESTA!**

FRUIT COCKTAIL	3 16-oz.	11¢
TOMATO JUICE	2 16-oz.	11¢
PEAR HALVES	3 16-oz.	11¢
SLICED PEARS	3 16-oz.	11¢
PEACH HALVES	3 16-oz.	11¢
SLICED PEACHES	3 16-oz.	11¢
CATSUP	3 16-oz.	11¢
PUMPKIN	3 16-oz.	11¢

Del Monte W.K.	4 16-oz.	11¢
CORN	4 16-oz.	11¢
Del Monte Cream	4 16-oz.	11¢
CORN	4 16-oz.	11¢
Del Monte Cut	4 16-oz.	11¢
GREEN BEANS	4 16-oz.	11¢
Del Monte	4 16-oz.	11¢
FRENCH BEANS	4 16-oz.	11¢
Del Monte Chopping	4 16-oz.	11¢
SPINACH	4 16-oz.	11¢



Duke's BLACK PEPPER	4-oz.	69¢
Mrs. Grass EGG		55¢
NOODLES	16-oz.	99¢
CORNED BEEF	12-oz.	\$1.19
Enriched Pre-Cooked MINUTE RICE	28-oz.	\$1.19
Tasty THANK YOU PUDDINGS	3 18-oz. cans	\$1

Scot Farm BUTTERMILK BISCUITS	9-oz.	10¢
Stokely TOMATO JUICE	46-oz.	49¢
Burns for 3 Hours DURAFLAME LOGS	Ea.	89¢
Cinnamon or McIntosh SENECA APPLESAUCE	35-oz.	69¢
10" off ARCHWAY COOKIES	Ea.	59¢

## NEW EVERYDAY LOW PRICES

Pure Vegetable WESSON OIL 16 oz. btl	57¢	Stokely Sliced Carrots	23¢	Pure Vegetable CRISCO OIL 128 oz.	\$3.99	Imperial Soft MARGARINE 1 lb.	65¢
Pure Vegetable WESSON OIL 24 oz. btl	79¢	Scot Lad Salad Oil 24 oz.	65¢	CRISCO SHORTENING 1 lb.	55¢	Scot Lad Pancake Syrup 16 oz.	53¢
Pure Vegetable WESSON OIL 38 oz. btl	\$1.25	Scot Lad Salad Oil 38 oz.	\$1.05	CRISCO SHORTENING 3 lb.	\$1.43	Scot Lad Pancake Syrup 32 oz.	87¢
Pure Vegetable WESSON OIL 48 oz. btl	\$1.57	Scot Lad Salad Oil 48 oz.	\$1.29	Gold Medal FLOUR 10 lb.	\$1.69	Quaker CORN MEAL 1.5 lb.	47¢
Pure Vegetable WESSON OIL Gal	\$3.99	Pure Vegetable CRISCO OIL 24 oz.	79¢	Gold Medal FLOUR 25 lb.	\$3.79	Quaker CORN MEAL 5 lb.	85¢
Stokely Purple Plum 16 oz. can	39¢	Pure Vegetable CRISCO OIL 12 oz.	43¢	Scot Lad Margarine 1 lb.	31¢	Quaker Frost Mixes 7 oz.	29¢
Stokely Purple Plum 2.5 can	53¢	Pure Vegetable CRISCO OIL 38 oz.	\$1.25	Royal Scot Margarine 1 lb.	29¢	Quaker Cake Mixes 9 oz.	25¢
Assorted FAYGO POP Qt.	37¢	Pure Vegetable CRISCO OIL 48 oz.	\$1.57	Imperial Margarine 1 lb.	59¢	S & L Long Grain Rice 2 lb.	59¢

VALUABLE COUPON  
**SAVE 48¢**  
Polly's Grade A LARGE EGGS  
Dozen 69¢  
LIMIT 2 PER COUPON PER FAMILY  
GOOD THRU 2-14-76

VALUABLE COUPON  
**SAVE UP TO 54¢**  
Sealtest 1/2% LO-FAT MILK  
Gallon 98¢  
LIMIT 2 PER COUPON PER FAMILY  
GOOD THRU 2-14-76

VALUABLE COUPON  
**SAVE 28¢**  
Hills Bros COFFEE  
2-lb. \$2.00  
LIMIT 1 PER COUPON PER FAMILY  
GOOD THRU 2-14-76

VALUABLE COUPON  
**SAVE UP TO 60¢**  
Borden Assorted SHERBET  
1/2-Gallon 69¢  
LIMIT 3 PER COUPON PER FAMILY  
GOOD THRU 2-14-76

**Save UP TO \$7.12**

WITH POLLY'S BONUS COUPONS and THESE IN-STORE COUPONS

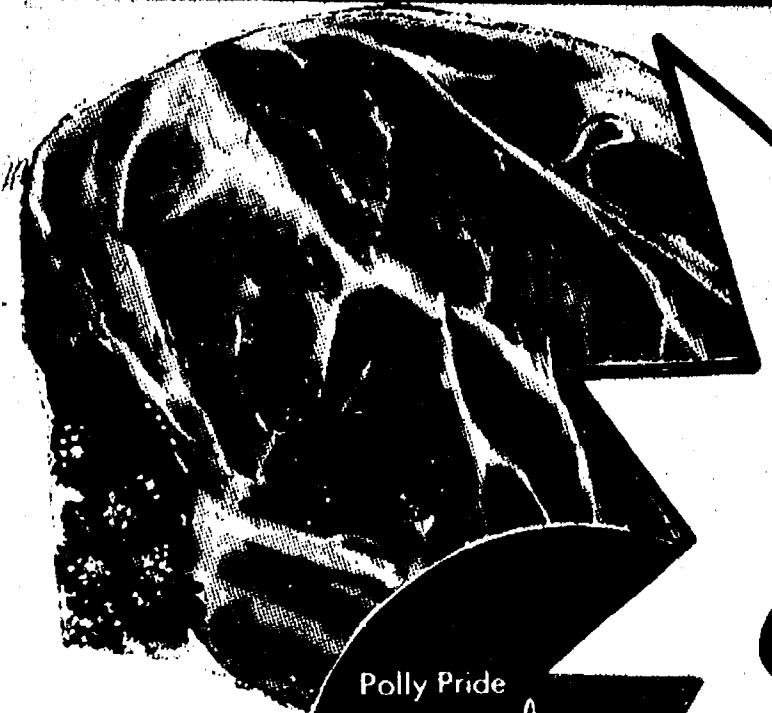
**7-UP 99¢**  
8-Pak 10-Oz. Bottles  
**Sunshine Krispy CRACKERS 39¢**  
1-Lb. Box

**SAVE 66¢ WITH IN-STORE COUPON**

SAVE 30¢ WITH IN-STORE COUPON	<b>SWIFTNING</b>	3-Lb.	99¢
SAVE 30¢ WITH IN-STORE COUPON	<b>GOLD MEDAL FLOUR</b>	10-Lb.	\$1.39
SAVE 18¢ WITH IN-STORE COUPON	<b>MRS. BUTTERWORTH</b>	12-oz.	49¢
SAVE 14¢ WITH IN-STORE COUPON	<b>WOOLITE</b>	8-Oz.	69¢
SAVE 20¢ WITH IN-STORE COUPON	<b>EASY-ON STARCH</b>	22-oz.	59¢
SAVE 26¢ WITH IN-STORE COUPON	<b>AUTOMATIC VANISH</b>	9-Oz.	59¢
SAVE 26¢ WITH IN-STORE COUPON	<b>FRISKIES CAT FOOD</b>	5 6.5-Oz. can	99¢
SAVE 30¢ MILKY WAY, SNICKERS	<b>FUN SIZE CANDIES</b>	1-Lb.	99¢

SAVE 26¢ WITH IN-STORE COUPON	<b>MINUTE MAID ORANGE JUICE</b>	3 6-Oz. cans	79¢
SAVE 21¢ WITH IN-STORE COUPON	<b>CHIFFON</b>	1-lb. Sticks	75¢
SAVE 10¢ WITH IN-STORE COUPON	<b>ASSORTED PATES SNACKS</b>		79¢
SAVE 20¢ WITH IN-STORE COUPON	<b>M &amp; M's</b>	1-Lb.	99¢
SAVE 10¢ WITH IN-STORE COUPON	<b>SCOT PRIDE BACON</b>	1-Lb.	\$1.19
SAVE 40¢ WITH IN-STORE COUPON	<b>FARMER PEET LUNCH MEAT</b>	1-Lb.	99¢
SAVE \$1.00 WITH IN-STORE COUPON	<b>HAMBURG</b>	10-Lb.	\$6.00
SAVE 20¢ WITH IN-STORE COUPON	<b>COLD CAPSULES</b>	10-ct.	89¢





Polly Pride Quality *Boneless*  
**CHUCK ROAST**

SAVE 70¢ LB.  
lb. **89¢**

Polly Pride  
*Boneless*  
**CHUCK STEAK 99¢**  
Lb.

**VEAL SALE!!**

Quality Veal				Quality			
<b>SIRLOIN CHOPS</b>	LB.	<b>\$1.99</b>		<b>VEAL SHANKS</b>	LB.	<b>99¢</b>	
Quality Veal				Quality			
<b>RIB CHOPS</b>	LB.	<b>\$1.89</b>		<b>VEAL BREAST</b>	LB.	<b>\$1.19</b>	
Quality Veal				Quality Bone-In			
<b>LOIN CHOPS</b>	LB.	<b>\$1.99</b>		<b>VEAL STEW</b>	LB.	<b>\$1.09</b>	
Quality Blade-cut Veal				Quality Boneless			
<b>SHOULDER CHOPS</b>	LB.	<b>\$1.29</b>		<b>VEAL STEW</b>	LB.	<b>\$1.79</b>	
Quality Round w/bone Veal				Quality Veal			
<b>SHOULDER CHOPS</b>	LB.	<b>\$1.39</b>		<b>CUBE STEAK</b>	LB.	<b>\$1.89</b>	
Quality Round Bone Veal				Quality Veal			
<b>LEG or RUMP ROAST</b>	LB.	<b>\$1.19</b>		<b>CHOW MEIN</b>	LB.	<b>\$1.89</b>	
Quality Veal				Quality Veal			
<b>SHOULDER ROAST</b>	LB.	<b>\$1.19</b>		<b>ROUND STEAK</b>	LB.	<b>\$2.49</b>	

**SENIOR CITIZENS**

At Polly's we not only give you special treatment, but we treat everybody the same. We do not have a minimum purchase on any of our twenty-two weekly coupons. We sincerely believe that everybody is entitled to save more at Polly's! By the way, have you noticed that our smaller packages are priced less than most of our competitors? Check & compare, Polly's does save you more on your total food bill!



**Polly's** MASTER MARKETS  
1101 M-52  
**CHELSEA, MICH.**  
(Corner M-52 and Old U.S. 12)

**POLLY'S ON SPRING ARBOR**

**OPEN 24 HOURS**

ALL OTHER POLLY'S OPEN  
**DAILY 8 A.M. TIL 10 P.M.**  
**SUNDAY 9 A.M. TIL 9 P.M.**

Crisp Fresh

**CABBAGE**

Lb. **12¢**

Farmer Peet Lean & Meaty  
**SPARERIBS**

SAVE 50¢  
Small Size  
Lb. **\$1.19**

Polly Pride Quality Beef							
<b>GROUND CHUCK</b>	..... Lb.	<b>89¢</b>					
Polly Quality Beef							
<b>CUBE STEAK</b>	..... Lb.	<b>\$1.49</b>					
Polly Pride Quality Boneless							
<b>ENGLISH POT ROAST</b>	..... Lb.	<b>\$1.09</b>					
Polly Pride Quality Boneless							
<b>BEEF STEW MEAT</b>	..... Lb.	<b>\$1.19</b>					
Swift Premium Sliced							
<b>BEEF LIVER</b>	..... Lb.	<b>59¢</b>					
Farmer Peet							
<b>BONANZA HAM</b>	..... Lb.	<b>\$1.69</b>					
Farmer Peet							
<b>RING BOLOGNA</b>	..... Lb.	<b>99¢</b>					

Cello-Pak							
<b>CARROTS</b>	..... 2-Lb.	<b>29¢</b>					
Fresh							
<b>BROCCOLI</b>	..... Ea.	<b>49¢</b>					
Red-Ripe							
<b>CHERRY TOMATOES</b>	..... Pint	<b>39¢</b>					
Red or White 40 Size							
<b>GRAPEFRUIT</b>	..... Ea.	<b>11¢</b>					

Scot Lad

**SHERBET**  
1/2 Gallon  
**69¢**  
SAVE 20¢ WITH BONUS COUPON

Nickerson							
<b>OCEAN PERCH</b>	..... 1 Lb.	<b>89¢</b>					
Queen of Scot							
<b>PEAS</b>	..... 20-Oz. Bag	<b>49¢</b>					
Queen of Scot							
<b>CORN</b>	..... 20-oz. Bag	<b>49¢</b>					
Morton Glazed							
<b>DONUTS</b>	..... 10-oz.	<b>69¢</b>					
Morton Jelly							
<b>DONUTS</b>	..... 11 oz.	<b>69¢</b>					

Florida 100 Size  
**TEMPLE ORANGES 6¢**  
Ea.

Government Inspected  
**TURKEY DRUMSTICKS**  
Lb. **39¢**

Eckrich Regular or Beef							
<b>FUN FRANKS</b>	..... Lb. Pkg.	<b>\$1.09</b>					
Eckrich							
<b>SMORGAS PAK</b>	..... Lb. Pkg.	<b>\$1.49</b>					
Eckrich Polish or							
<b>SMOKED SAUSAGE</b>	..... Lb. Pkg.	<b>\$1.49</b>					
Eckrich Beef							
<b>SMORGAS PAK</b>	..... 12-Oz. Pkg.	<b>\$1.39</b>					

Government Inspected  
**Chicken**

WHOLE LEGS	..... Lb.	<b>79¢</b>
THIGHS	..... Lb.	<b>75¢</b>
DRUMSTICKS	..... Lb.	<b>89¢</b>
BREASTS	..... Lb.	<b>89¢</b>

Fresh  
**Seafood**

Greenland TURBOT FILLETS	..... Lb.	<b>89¢</b>
Ocean PERCH FILLETS	..... Lb.	<b>89¢</b>
Weight Watchers Delite HALIBUT STEAK	..... Lb.	<b>79¢</b>

**Facts About Food MEAT FACTS**

Sometime shortly after the discovery of fire, historians say a caveman dropped a piece of raw tiger meat into flames. When he tried to retrieve it, he only succeeded in burning his fingers. Instinctively, he licked his fingers. And thus did man have his first taste of cooked meat.

Today his descendants are doing just about the same thing...including sometimes burning their fingers...only they use an oven or a rotisserie or a charcoal grille instead of an open fire. And, here in America at least, they do it on a scale their cave-dwelling ancestor could hardly have comprehended.

In fact, the meat industry...which includes the raising, marketing, slaughtering, and processing of animals for meat...is one of America's largest. We have some three million farms and ranches where animals are grown, plus something like three thousand major meat slaughtering plants and over thirteen hundred meat processing plants, plus hundreds of smaller local slaughterers.

Last year, for instance, Americans consumed about 35 billion pounds of red meat more than 80% of the cattle, hogs, sheep, lamb and calves were slaughtered under federal government inspection.

Which just shows how far we've come. The first federal inspection law was passed back in 1890, but it applied only to meat going overseas. It was in response to complaints from France and England about the quality of U.S. beef reaching their tables.

Today nobody...here or abroad...has any beef coming about American meat. It's the best in the world...and we like to think Polly's has the best in town.

**Snack Bar Specials!**

Mon. - Ham Salad & Tomato Soup - 99¢  
Tues. - Goulash & Cole Slaw 3 99¢  
Wed. - Meat Loaf, Mashed Potatoes & Cole Slaw - \$1.29  
Thurs. - Polly Broasted Chicken, Mashed Potatoes & Cole Slaw - \$1.29  
Fri. - Tuna & Noodles & Cole Slaw - 99¢  
Sat. - Coney Island, F. F. & Cole Slaw - 99¢

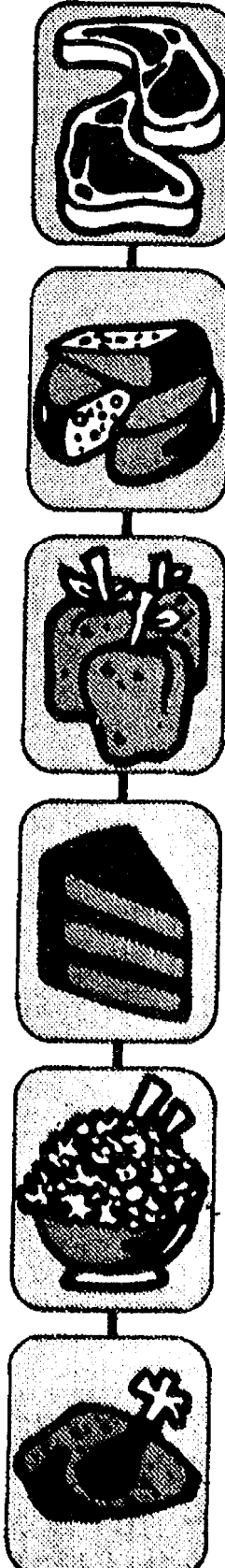


**Bakery Delights**

FRESH DAILY FROM THE

**Alpine BakeHaus!**

Fresh							
<b>DUTCH APPLE PIE</b>	..... 8-IN.	<b>98¢</b>					
Fresh							
<b>JELLY BISMARCKS</b>	6 for	<b>79¢</b>					
Fresh							
<b>FRENCH BREAD</b>	1 LB. LOAF	<b>49¢</b>					





# Thank You

FOR SHOPPING AT...



*Polly's*

MASTER  
MARKETS

1101 M-52

**CHELSEA, MICH.**

(Corner M-52 and Old U.S. 12)

WHERE WE ARE  
HAPPY TO.....

**save**

**YOU MONEY!**